

DISTRIBUTORI MONOBLOCCO E COMPONENTI MONOBLOCK VALVES AND SECTIONAL VALVES

	Descrizione - <i>Description</i>	Type	Page
	CARATTERISTICHE TECNICHE <i>TECHNICAL SPECIFICATIONS</i>		292
	DISTRIBUTORE MONOBLOCCO <i>MONOBLOCK VALVE</i>	QM 15	293
	DISTRIBUTORE MONOBLOCCO <i>MONOBLOCK VALVE</i>	QV 15	294
	DISTRIBUTORE MONOBLOCCO <i>MONOBLOCK VALVE</i>	QM 25	295
	DISTRIBUTORE MONOBLOCCO <i>MONOBLOCK VALVE</i>	QM 35	296
	DISTRIBUTORE MONOBLOCCO <i>MONOBLOCK VALVE</i>	QM 45	297
	DISTRIBUTORE MONOBLOCCO <i>MONOBLOCK VALVE</i>	QM 75	298
	DISTRIBUTORE MONOBLOCCO <i>MONOBLOCK VALVE</i>	QM 95	299
	DISTRIBUTORE COMPONENTI <i>SECTIONAL VALVE</i>	QS 30	300
	DISTRIBUTORE COMPONENTI <i>SECTIONAL VALVE</i>	QE 50	301
	DISTRIBUTORE COMPONENTI <i>SECTIONAL VALVE</i>	QS 80	302
	DISTRIBUTORE COMPONENTI <i>SECTIONAL VALVE</i>	QS 130	303

CARATTERISTICHE TECNICHE TECHNICAL SPECIFICATIONS

CARATTERISTICHE

Distributori monoblocco serie QM - QV
Distributori componibili serie QS - QE

- Elevate prestazioni tecniche permettono di soddisfare molteplici esigenze applicative.
- Corpo in ghisa speciale ad alta resistenza adatto per le alte pressioni di lavoro.
- Cursori nichelati ad alto scorrimento consentono una lunga durata di vita ad elevate pressioni.
- Trafilamenti ridottissimi.
- Intercambiabilità dei cursori aventi schema parallelo (ad eccezione del QM35 e QM65).
- Possibilità d'inversione del lato di comando.
- Libera circolazione con circuito tipo "Y" per favorire alte portate con ridotte perdite di carico.

Distributori componibili serie QS - QE.

- Maggior versatilità e prestazioni superiori.
- Valvole di ritegno su ogni sezione di lavoro.
- Protezione degli utilizzi con valvole ausiliarie antiurto, anticavitazione, combinate.
- Possibilità di circuiti in parallelo, serie, tandem.
- Entrate e scarichi laterali e intermedi.
- Elementi intermedi con valvole per vari tipi di regolazioni.

AVVERTENZE

Distributori monoblocco serie QM - QV
Distributori componibili serie QS - QE

- I distributori devono essere montati su superfici perfettamente piane, in completa assenza di tensioni e vibrazioni.
- Non utilizzare viti o raccordi conici sui filetti cilindrici.
- Per la pulizia è vietato l'utilizzo di diluenti/solventi e qualsiasi altro prodotto che possa intaccare i meccanismi di comando, le guarnizioni e le parti in gomma.
- Utilizzare esclusivamente olio idraulico a base minerale.
- Temperature limite dell'olio: $-30^{\circ}\text{C} \div 80^{\circ}\text{C}$
- Temperature olio consigliate: $30^{\circ}\text{C} \div 60^{\circ}\text{C}$
- Filtrazione raccomandata: 60 Micron
- Viscosità: $10 \div 400 \text{ mm}^2/\text{s}$

Distributori componibili serie QS - QE

- Non manomettere i dadi dei tiranti per non compromettere il buon funzionamento del distributore.

FEATURES

QM - QV Monoblock valves.
QS - QE Sectional valves

- High technical performances allow to satisfy multiple application requirements.
- Special high resistance cast-iron body suitable for high working pressures.
- Nickel-plated high-sliding spools allow a long life at high pressures.
- Very low oil leakage.
- Interchangeability of the spools with parallel scheme (with the exception of QM35 and QM65).
- Reversing of the control side is possible.
- Free movement with "Y shape" circuit to promote high flow rates with low pressure drop.

QS - QE Sectional valves

- High versatility and superior performances.
- Check valves on each working section.
- Ports protection by anti-shock, anti-cavitation, combined auxiliary valves.
- Possibility of parallel circuits, serie and tandem.
- Side and intermediate inlets and outlets.
- Intermediate elements provided with valves for various types of regulations.

WARNINGS

QM - QV Monoblock valves
QS - QE Sectional valves

- The valves must be mounted on perfectly flat, completely stress and vibration free surfaces.
- Do not use tapered screws or nipples on cylindrical threads.
- Cleaning: it is absolutely forbidden to use diluents/solvents and any other product that may damage the control joints, the seals and the rubber parts.
- Use only mineral based hydraulic oil.
- Oil temperature range: $-30^{\circ}\text{C} \div 80^{\circ}\text{C}$
- Recommended oil temperature: $30^{\circ}\text{C} \div 60^{\circ}\text{C}$
- Recommended filtration: 60 Micron
- Viscosity: $10 \div 400 \text{ mm}^2/\text{s}$

QS - QE Sectional valves

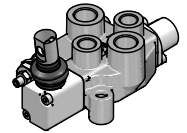
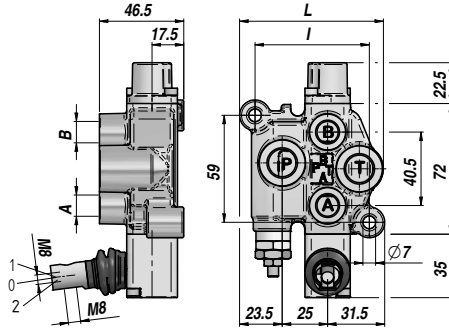
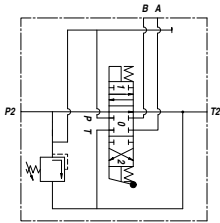
- Do not tamper the tierod nuts in order not to impair the correct working of the valve.

DISTRIBUTORE MONOBLOCCO
MONOBLOCK VALVE

Qn
16 l/min

Qmax
20 l/min

QM 15



LEVA DA ORDINARE
SEPARATAMENTE
LEVER TO BE ORDERED
SEPARATELY
Code : DQ060002286299

Codice Code	Tipo Type	N° sezioni Sections No.	Filetti - Threads					P MAX bar	P MAX U bar	P MAX S bar	L	I	kg
			A-B BSP	P BSP	T BSP	P2 BSP	T2 BSP						
DQM11SGN10S000	QM15/1-7SN/1x03.A1.M1/3D	1	1/4"	3/8"	3/8"	-	-	250	250	25	80	63	1,20

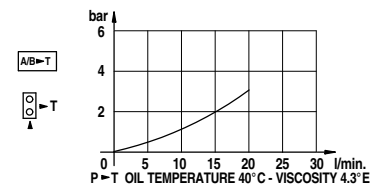
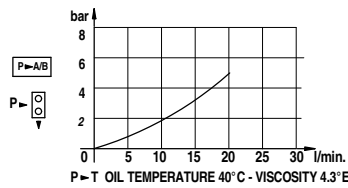
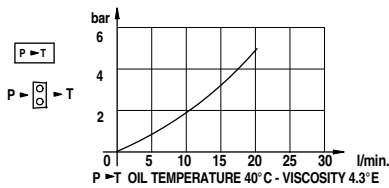
P MAX U = Pressione Max. sugli utilizzi - Max. pressure on ports

P MAX S = Pressione Max. allo scarico - Max. pressure in tank-line

Valvola Max. Pressione - Relief Valve : B=5:120bar - N=100:280bar (Standard)

I CODICI SONO RIFERITI AI MODELLI: DOPPIO EFFETTO - 3 POSIZIONI - RITORNO A MOLLA - A/B CHIUSI - FILETTI BSP

THESE CODES REFER TO: DOUBLE ACTING TYPE - 3 POSITIONS - SPRING RETURN - A/B PORTS CLOSED - BSP THREADS



CURSORE SPOOL TYPE		POSIZIONATORE SPOOL CONTROL		A RICHIESTA ON REQUEST	
01 S.E. P > A		M1		A1/Z1	Comando manuale + distanziale per cursore 16 e posizionatore R8 Manual control + spacer for spool 16 and control R8
02 S.E. P > B		M2		A1D41	Comando elettrico ON/OFF doppio + comando manuale ON/OFF double electric control with manual control
03 D.E. A/B > 1		M3		N1-A1	Comando D.E. per microswitch centralizzato (senza micro) Centralized microswitch D.A. hand control (without microswitch)
11 D.E. A/B > T		R1			
16 D.E. A/B > 1 con - with: A1Z1-R8		R2			
26 D.E. A/B > 1 con - with: R10-Z1		R3			
		R4			
		R5			
		R8			
		R10-Z1			

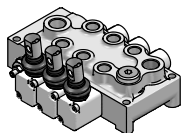
Cursori a ricoprimento positivo
Positive overlap spools

QV 15

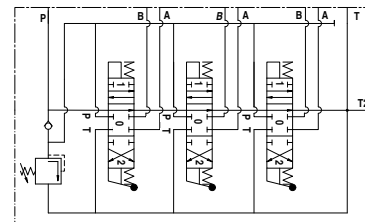
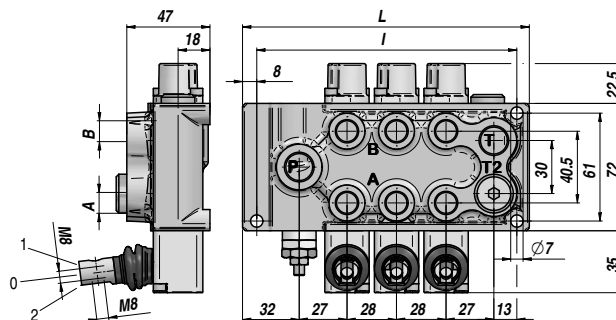
Qn
20 l/min

Q max
25 l/min

DISTRIBUTORE MONOBLOCCO MONOBLOCK VALVE



**LEVA DA ORDINARE SEPARATAMENTE
LEVER TO BE ORDERED SEPARATELY**
Code : DQ060002286299



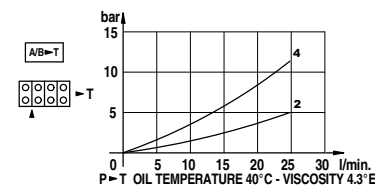
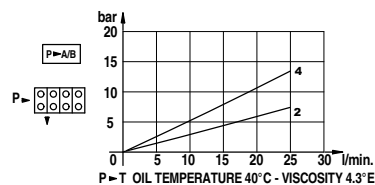
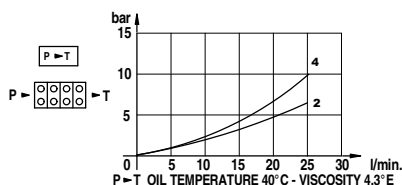
Codice Code	Tipo Type	N° sezioni Sections No.	Filetti - Threads					P MAX bar	P MAX U bar	P MAX S bar	L	I	kg
			A-B BSP	P BSP	T BSP	P2 BSP	T2 BSP						
DQV12SGN10S000	QV15/2-1 SN/2x03.A1.M1/3D	2									134	119	2,50
DQV13SGN10S000	QV15/3-1 SN/3x03.A1.M1/3D	3	1/4"	3/8"	3/8"	-	3/8"	280	280	25	162	147	3,15
DQV14SGN10S000	QV15/4-1 SN/4x03.A1.M1/3D	4									190	175	3,80

P MAX U = Pressione Max. sugli utilizzi - Max. pressure on ports

P MAX S = Pressione Max. allo scarico - Max. pressure in tank-line

Valvola Max. Pressione - Relief Valve : B=5:120bar - N=100:280bar (Standard)

I CODICI SONO RIFERITI AI MODELLI: DOPPIO EFFETTO - 3 POSIZIONI - RITORNO A MOLLA - A/B CHIUSI - FILETTI BSP - PREDISPOSTO PER CARRY-OVER
THESE CODES REFER TO: DOUBLE ACTING TYPE - 3 POSITIONS - SPRING RETURN - A/B PORTS CLOSED - BSP THREADS - MACHINED FOR CARRY-OVER



CURSORE SPOOL TYPE	
01 S.E. P > A	
02 S.E. P > B	
03 D.E. A/B & T	
11 D.E. A/B > T	
16 D.E. A/B & T	 con - with: A1Z1-R8
26 D.E. A/B & T	 con - with: R10-Z1

POSIZIONATORE SPOOL CONTROL	
M1	
M2	
M3	
R1	
R2	
R3	
R4	
R5	
R8	
R10-Z1	

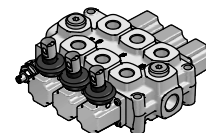
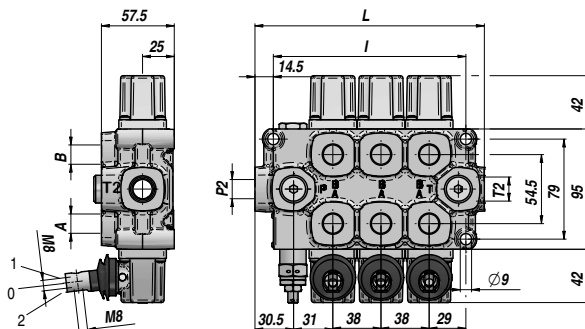
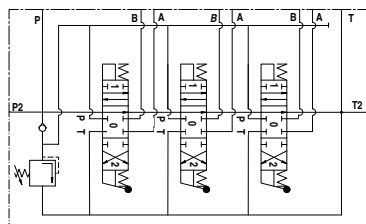
A RICHIESTA ON REQUEST	
A1/Z1	Comando manuale + distanziale per cursore 16 e posizionatore R8 Manual control + spacer for spool 16 and control R8
A35	Manipolatore Joystick
N1-A1	Comando D.E. per microswitch centralizzato (senza micro) Centralized microswitch D.A. spool control (without microswitch)
A1D41	Comando elettrico ON/OFF doppio + comando manuale ON/OFF double electric control with manual control
6D	Proseguimento di pressione Power beyond (carry over)
16D	Tappo centro chiuso Closed center plug

DISTRIBUTORE MONOBLOCCO
MONOBLOCK VALVE

Qn
32 l/min

Q max
40 l/min

QM 25



LEVA DA ORDINARE SEPARATAMENTE
LEVER TO BE ORDERED SEPARATELY
Code : DQ060002286299

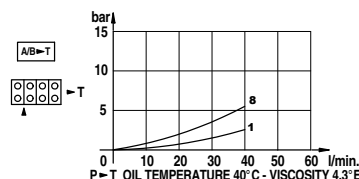
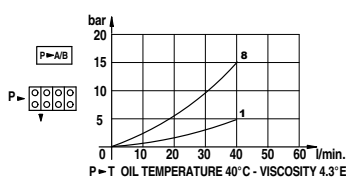
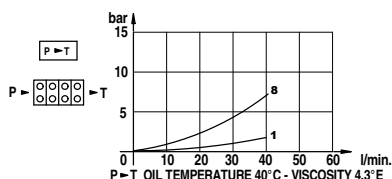
Codice Code	Tipo Type	N° sezioni Sections No.	Filetti - Threads					P MAX bar	P MAX U bar	P MAX S bar	L	I	kg
			A-B BSP	P BSP	T BSP	P2 BSP	T2 BSP						
DQM21SGN10S000	QM25/1-1SN/1x03.A1.M1/3D-S	1						350	350	25	107	76	3,00
DQM22SGN10S000	QM25/2-1SN/2x03.A1.M1/3D-S	2						350	350	25	145	114	4,50
DQM23SGN10S000	QM25/3-1SN/3x03.A1.M1/3D-S	3						320	320	25	183	152	5,60
DQM24SGN10S000	QM25/4-1SN/4x03.A1.M1/3D-S	4						300	300	25	221	190	7,30
DQM25SGN10S000	QM25/5-1SN/5x03.A1.M1/3D-S	5	3/8"	3/8"	3/8"	3/8"	1/2"	300	300	25	259	228	8,90
DQM26SGN10S000	QM25/6-1SN/6x03.A1.M1/3D-S	6						300	300	25	297	266	10,10
DQM27SGN10S000	QM25/7-1SN/7x03.A1.M1/3D-S	7						300	300	25	335	304	11,00
DQM28SGN10S000	QM25/8-1SN/8x03.A1.M1/3D-S	8						300	300	25	373	342	13,60

P MAX U = Pressione Max. sugli utilizzi - Max. pressure on ports

P MAX S = Pressione Max. allo scarico - Max. pressure in tank-line

Valvola Max. Pressione - Relief Valve : B=10:80bar - N=81:200bar (Standard) - R=201:380bar

I CODICI SONO RIFERITI AI MODELLI: DOPPIO EFFETTO - 3 POSIZIONI - RITORNO A MOLLA - A/B CHIUSI - FILETTI BSP - PREDISPOSTO PER CARRY-OVER
THESE CODES REFER TO: DOUBLE ACTING TYPE - 3 POSITIONS - SPRING RETURN - A/B PORTS CLOSED - BSP THREADS - MACHINED FOR CARRY-OVER



CURSORE SPOOL TYPE	Diagram
01 S.E. P > A	
02 S.E. P > B	
03 D.E. A/B 1	
06 D.E. P/T/A/B 1	
11 D.E. A/B > T	
16 D.E. A/B 1	
26 D.E. A/B 1	

POSIZIONATORE SPOOL CONTROL	Diagram
M1	
M2	
M3	
R1	
R2	
R3	
R4	
R5	
R8	
R10-Z1	

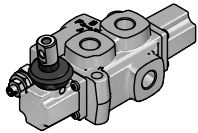
A RICHIESTA ON REQUEST	Description
A1/Z1	Comando manuale + distanziale per cursore 16 e posizionatore R8 Manual control + spacer for spool 16 and control R8
A1/PR	Comando manuale + perno Manual control with pin
A1S	Leva di sicurezza Safety lever
A35	Manipolatore Joystick
RTL-D	Comando rotativo Rotary control
P1-N	Comando pneumatico Pneumatic control
D9	Comando elettrico ON/OFF doppio ON/OFF double electric control
A1D41	Comando elettrico ON/OFF doppio + comando manuale ON/OFF double electric control with manual control
M1-N1	Posizionatore D.E. per microswitch centralizzato (senza micro) Centralized microswitch D.A. spool control (without microswitch)
6D	Proseguimento di pressione Power beyond (carry over)
16D	Tappo centro chiuso Closed center plug

QM 35

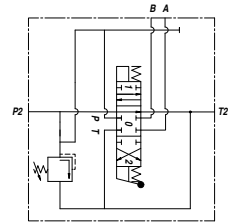
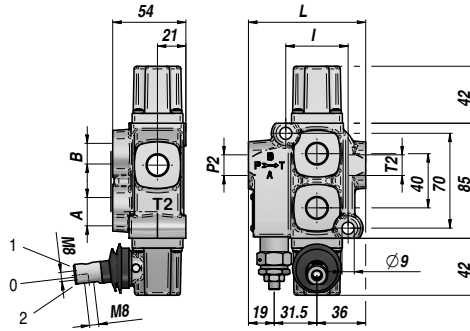
Qn
40 l/min

Q max
50 l/min

DISTRIBUTORE MONOBLOCCO
MONOBLOCK VALVE



LEVA DA ORDINARE SEPARATAMENTE
LEVER TO BE ORDERED SEPARATELY
Code : DQ060002286299



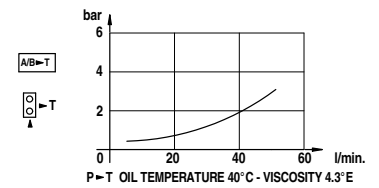
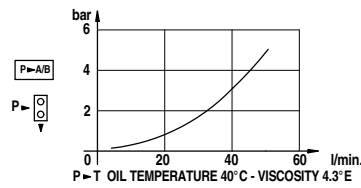
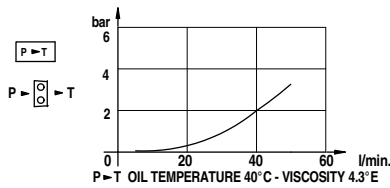
Codice Code	Tipo Type	N° sezioni Sections No.	Filetti - Threads					P MAX bar	P MAX U bar	P MAX S bar	L	I	kg
			A-B BSP	P BSP	T BSP	P2 BSP	T2 BSP						
DQM31SGN10S000	QM35/1-7SN/1x03.A1.M1/3D-S	1	3/8"	-	-	3/8"	3/8"	300	300	25	86.5	46	1,85

P MAX U = Pressione Max. sugli utilizzi - Max. pressure on ports

P MAX S = Pressione Max. allo scarico - Max. pressure in tank-line

Valvola Max. Pressione - Relief Valve : B=10:80bar - N=81:200bar (Standard) - R=201:380bar

I CODICI SONO RIFERITI AI MODELLI: DOPPIO EFFETTO - 3 POSIZIONI - RITORNO A MOLLA - A/B CHIUSI - FILETTI BSP
THESE CODES REFER TO: DOUBLE ACTING TYPE - 3 POSITIONS - SPRING RETURN - A/B PORTS CLOSED - BSP THREADS



CURSORE SPOOL TYPE	Diagram
01 S.E. P > A	
02 S.E. P > B	
03 D.E. A/B 1	
11 D.E. A/B > T	
16 D.E. A/B 1 con - with: A1Z1-R8	

Cursori a ricoprimento positivo
Positive overlap spools

POSIZIONATORE SPOOL CONTROL	Diagram
M1	
M2	
M3	
R1	
R2	
R3	
R4	
R5	
R8	

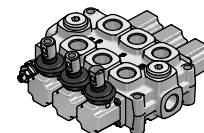
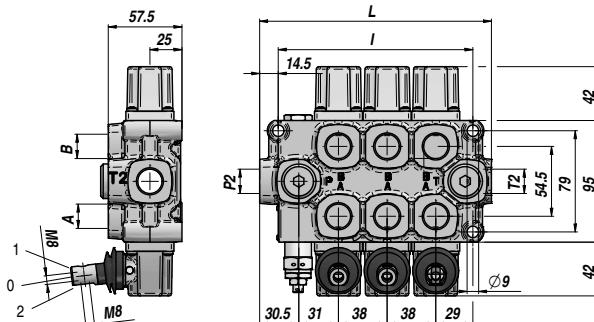
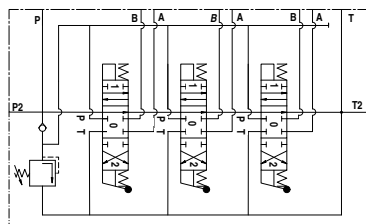
A RICHIESTA ON REQUEST	Description
A1/Z1	Comando manuale + distanziale per cursore 16 e posizionatore R8 Manual control + spacer for spool 16 and control R8
A1/PR	Comando manuale + perno Manual control with pin
A1S	Leva di sicurezza Safety lever
M1-N1	Posizionatore D.E. per microswitch centralizzato (senza micro) Centralized microswitch D.A. spool control (without microswitch)

DISTRIBUTORE MONOBLOCCO
MONOBLOCK VALVE

Qn
48 l/min

Q max
60 l/min

QM 45



LEVA DA ORDINARE SEPARATAMENTE
LEVER TO BE ORDERED SEPARATELY
Code : DQ060002286299

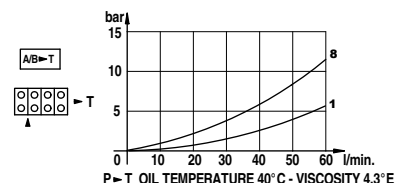
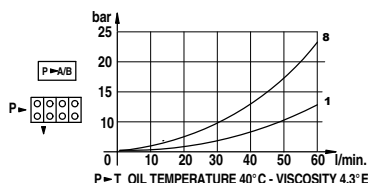
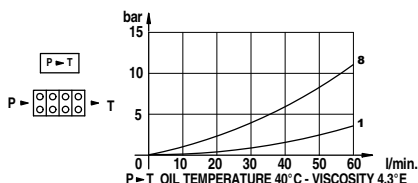
Codice Code	Tipo Type	N° sezioni Sections No.	Filetti - Threads					P MAX bar	P MAX U bar	P MAX S bar	L	I	kg
			A-B BSP	P BSP	T BSP	P2 BSP	T2 BSP						
DQM41SGN10S000	QM45/1-1SN/1x03.A1.M1/3D-S	1						350	350	25	107	76	3,00
DQM42SGN10S000	QM45/2-1SN/2x03.A1.M1/3D-S	2						350	350	25	145	114	4,50
DQM43SGN10S000	QM45/3-1SN/3x03.A1.M1/3D-S	3						320	320	25	183	152	5,60
DQM44SGN10S000	QM45/4-1SN/4x03.A1.M1/3D-S	4						300	300	25	221	190	7,30
DQM45SGN10S000	QM45/5-1SN/5x03.A1.M1/3D-S	5	1/2"	1/2"	1/2"	1/2"	1/2"	300	300	25	259	228	8,90
DQM46SGN10S000	QM45/6-1SN/6x03.A1.M1/3D-S	6						300	300	25	297	266	10,10
DQM47SGN10S000	QM45/7-1SN/7x03.A1.M1/3D-S	7						300	300	25	335	304	11,00
DQM48SGN10S000	QM45/8-1SN/8x03.A1.M1/3D-S	8						300	300	25	373	342	13,60

P MAX U = Pressione Max. sugli utilizzi - Max. pressure on ports

P MAX S = Pressione Max. allo scarico - Max. pressure in tank-line

Valvola Max. Pressione - Relief Valve : B=10:80bar - N=81:200bar (Standard) - R=201:380bar

I CODICI SONO RIFERITI AI MODELLI: DOPPIO EFFETTO - 3 POSIZIONI - RITORNO A MOLLA - A/B CHIUSI - FILETTI BSP - PREDISPOSTO PER CARRY-OVER
THESE CODES REFER TO: DOUBLE ACTING TYPE - 3 POSITIONS - SPRING RETURN - A/B PORTS CLOSED - BSP THREADS - MACHINED FOR CARRY-OVER



CURSORE SPOOL TYPE	Diagram
01 S.E. P > A	
02 S.E. P > B	
03 D.E. A/B & T	
06 D.E. P/T/A/B & T	
11 D.E. A/B > T	
16 D.E. A/B & T	 con - with: A1Z1-R8
26 D.E. A/B & T	 con - with: R10-Z1

POSIZIONATORE SPOOL CONTROL	Diagram
M1	
M2	
M3	
R1	
R2	
R3	
R4	
R5	
R8	
R10-Z1	

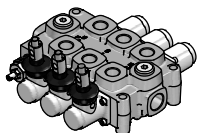
A RICHIESTA ON REQUEST	Description
A1/Z1	Comando manuale + distanziale per cursore 16 e posizionatore R8 Manual control + spacer for spool 16 and control R8
A1/PR	Comando manuale + perno Manual control with pin
A1S	Leva di sicurezza Safety lever
A35	Manipolatore Joystick
RTL-D	Comando rotativo Rotary control
P1-N	Comando pneumatico Pneumatic control
D9	Comando elettrico ON/OFF doppio ON/OFF double electric control
A1D41	Comando elettrico ON/OFF doppio + comando manuale ON/OFF double electric control with manual control
M1-N1	Posizionatore D.E. per microswitch centralizzato (senza micro) Centralized microswitch D.A. spool control (without microswitch)
6D	Proseguimento di pressione Power beyond (carry over)
16D	Tappo centro chiuso Closed center plug

QM 75

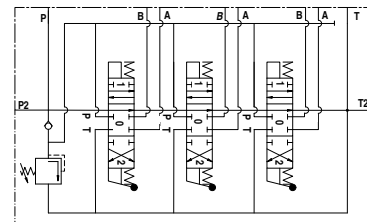
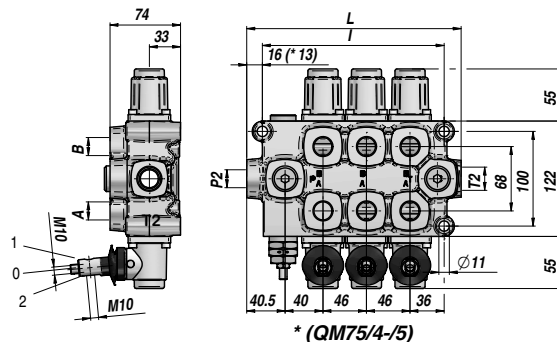
Qn
70 l/min

Q max
90 l/min

DISTRIBUTORE MONOBLOCCO MONOBLOCK VALVE



**LEVA DA ORDINARE
SEPARATAMENTE
LEVER TO BE ORDERED
SEPARATELY**
Code : DQ060002701399



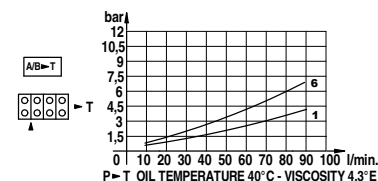
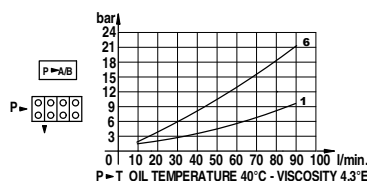
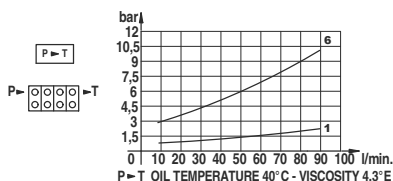
Codice Code	Tipo Type	N° sezioni Sections No.	Filetti - Threads					P MAX bar	P MAX U bar	P MAX S bar	L	I	kg
			A-B BSP	P BSP	T BSP	P2 BSP	T2 BSP						
DQM71SGN10S000	QM75/1-1SN/1x03.A1.M1/3D	1						350	350		134	100	5,70
DQM72SGN10S000	QM75/2-1SN/2x03.A1.M1/3D	2						350	350		180	146	7,60
DQM73SGN10S000	QM75/3-1SN/3x03.A1.M1/3D	3						300	300		226	192	10,40
DQM74SGN10S000	QM75/4-1SN/4x03.A1.M1/3D	4	1/2"	1/2"	1/2"	1/2"	3/4"	270	270	25	269	238	12,40
DQM75SGN10S000	QM75/5-1SN/5x03.A1.M1/3D	5						270	270		315	284	14,50
DQM76SGN10S000	QM75/6-1SN/6x03.A1.M1/3D	6						270	270		365	330	16,60

P MAX U = Pressione Max. sugli utilizzi - Max. pressure on ports

P MAX S = Pressione Max. allo scarico - Max. pressure in tank-line

Valvola Max. Pressione - Relief Valve : B=10:80bar - N=81:200bar (Standard) - R=201:380bar

I CODICI SONO RIFERITI AI MODELLI: DOPPIO EFFETTO - 3 POSIZIONI - RITORNO A MOLLA - A/B CHIUSI - FILETTI BSP - PREDISPOSTO PER CARRY-OVER
THESE CODES REFER TO: DOUBLE ACTING TYPE - 3 POSITIONS - SPRING RETURN - A/B PORTS CLOSED - BSP THREADS - MACHINED FOR CARRY-OVER



CURSORE SPOOL TYPE	Diagram
01 S.E. P > A	
02 S.E. P > B	
03 D.E. A/B & T	
06 D.E. P/T/A/B & T	
11 D.E. A/B > T	
16 D.E. A/B & T	 con - with: A1Z1-R8
26 D.E. A/B & T	 con - with: R10-Z1

POSIZIONATORE SPOOL CONTROL	Diagram
M1	
M2	
M3	
R1	
R2	
R3	
R4	
R5	
R8	
R10-Z1	

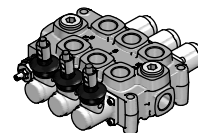
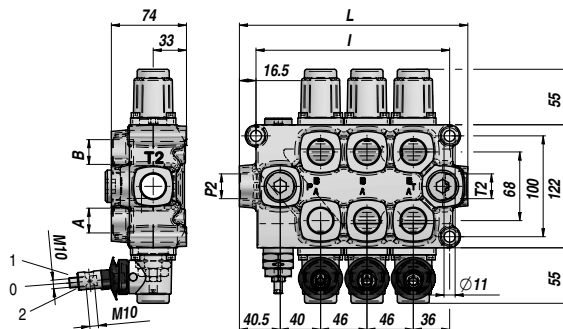
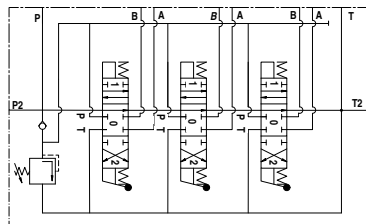
A RICHIESTA ON REQUEST	Description
A1/Z1	Comando manuale + distanziale per cursore 16 e posizionatore R8 Manual control + spacer for spool 16 and control R8
A1S	Leva di sicurezza Safety lever
A35	Manipolatore Joystick
RTL-D	Comando rotativo Rotary control
P1-N	Comando pneumatico Pneumatic control
A1D41	Comando elettrico ON/OFF doppio + comando manuale ON/OFF double electric control with manual control
M1-N1	Posizionatore D.E. per microswitch centralizzato (senza micro) Centralized microswitch D.A. spool control (without microswitch)
6D	Proseguimento di pressione Power beyond (carry over)
16D	Tappo centro chiuso Closed center plug

DISTRIBUTORE MONOBLOCCO
MONOBLOCK VALVE

Qn
95 l/min

Q max
120 l/min

QM 95



LEVA DA ORDINARE SEPARATAMENTE
LEVER TO BE ORDERED SEPARATELY
Code : DQ060002701399

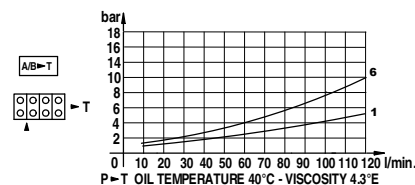
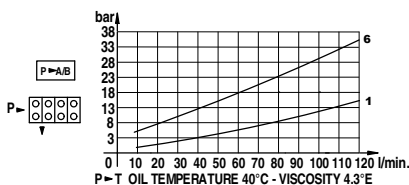
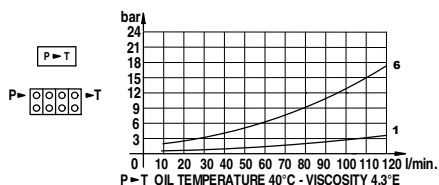
Codice Code	Tipo Type	N° sezioni Sections No.	Filetti - Threads					P MAX bar	P MAX U bar	P MAX S bar	L	I	kg
			A-B BSP	P BSP	T BSP	P2 BSP	T2 BSP						
DQM91SGN10S000	QM95/1-1SN/1x03.A1.M1/3D	1						350	350		134	100	5,70
DQM92SGN10S000	QM95/2-1SN/2x03.A1.M1/3D	2						350	350		180	146	7,60
DQM93SGN10S000	QM95/3-1SN/3x03.A1.M1/3D	3						300	300	25	226	192	10,40
DQM94SGN10S000	QM95/4-1SN/4x03.A1.M1/3D	4	3/4"	3/4"	3/4"	3/4"	270	270	273		238	12,40	
DQM95SGN10S000	QM95/5-1SN/5x03.A1.M1/3D	5						270	270		319	284	14,80
DQM96SGN10S000	QM95/6-1SN/6x03.A1.M1/3D	6						270	270		365	330	18,30

P MAX U = Pressione Max. sugli utilizzi - Max. pressure on ports

P MAX S = Pressione Max. allo scarico - Max. pressure in tank-line

Valvola Max. Pressione - Relief Valve : B=10:80bar - N=81:200bar (Standard) - R=201:380bar

I CODICI SONO RIFERITI AI MODELLI: DOPPIO EFFETTO - 3 POSIZIONI - RITORNO A MOLLA - A/B CHIUSI - FILETTI BSP - PREDISPOSTO PER CARRY-OVER
THESE CODES REFER TO: DOUBLE ACTING TYPE - 3 POSITIONS - SPRING RETURN - A/B PORTS CLOSED - BSP THREADS - MACHINED FOR CARRY-OVER



CURSORE SPOOL TYPE	Diagram
01 S.E. P > A	
02 S.E. P > B	
03 D.E. A/B & T	
06 D.E. P/T/A/B & T	
11 D.E. A/B > T	
16 D.E. A/B & T	 con - with: A1Z1-R8
26 D.E. A/B & T	 con - with: R10-Z1

POSIZIONATORE SPOOL CONTROL	Diagram
M1	
M2	
M3	
R1	
R2	
R3	
R4	
R5	
R8	
R10-Z1	

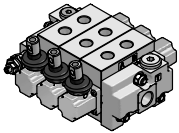
A RICHIESTA ON REQUEST	Description
A1/Z1	Comando manuale + distanziale per cursore 16 e posizionatore R8 Manual control + spacer for spool 16 and control R8
A1S	Leva di sicurezza Safety lever
A35	Manipolatore Joystick
RTL-D	Comando rotativo Rotary control
P1-N	Comando pneumatico Pneumatic control
A1D41	Comando elettrico ON/OFF doppio + comando manuale ON/OFF double electric control with manual control
M1-N1	Posizionatore D.E. per microswitch centralizzato (senza micro) Centralized microswitch D.A. spool control (without microswitch)
6D	Proseguimento di pressione Power beyond (carry over)
16D	Tappo centro chiuso Closed center plug

QS 30

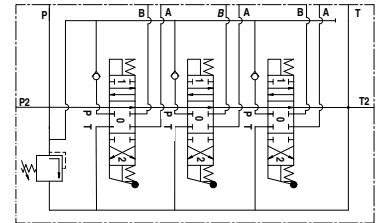
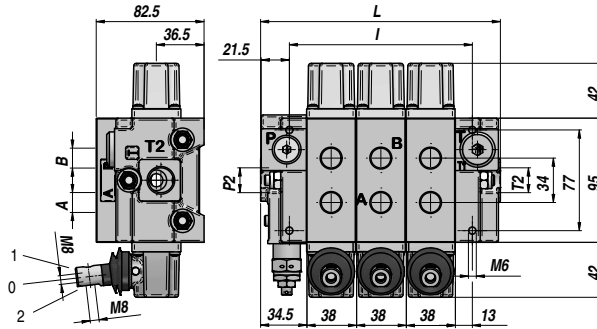
Qn
40 l/min

Q max
50 l/min

DISTRIBUTORE COMPONIBILE SECTIONAL VALVE



**LEVA DA ORDINARE SEPARATAMENTE
LEVER TO BE ORDERED SEPARATELY**
Code : DQ060002286299



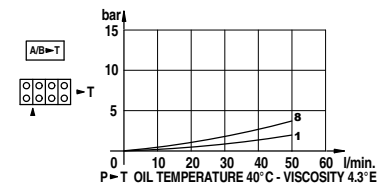
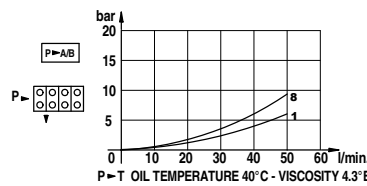
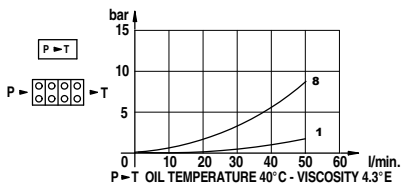
Codice Code	Tipo Type	N° sezioni Sections No.	Filetti - Threads					P MAX bar	P MAX U bar	P MAX S bar	L	I	kg
			A-B BSP	P BSP	T BSP	P2 BSP	T2 BSP						
DQS31SGN10S000	QS30/1-7SN/1x03.A1.M1/3D-S	1						375	375		107	64	4,20
DQS32SGN10S000	QS30/2-7SN/2x03.A1.M1/3D-S	2						375	375		145	102	6,20
DQS33SGN10S000	QS30/3-7SN/3x03.A1.M1/3D-S	3						375	375		183	140	8,10
DQS34SGN10S000	QS30/4-7SN/4x03.A1.M1/3D-S	4						350	350		221	178	10,10
DQS35SGN10S000	QS30/5-7SN/5x03.A1.M1/3D-S	5	3/8"	3/8"	1/2"	3/8"	1/2"	350	350	25	259	216	12,00
DQS36SGN10S000	QS30/6-7SN/6x03.A1.M1/3D-S	6						350	350		297	254	14,00
DQS37SGN10S000	QS30/7-7SN/7x03.A1.M1/3D-S	7						325	325		335	292	15,90
DQS38SGN10S000	QS30/8-7SN/8x03.A1.M1/3D-S	8						325	325		373	330	17,90

P MAX U = Pressione Max. sugli utilizzi - Max. pressure on ports

P MAX S = Pressione Max. allo scarico - Max. pressure in tank-line

Valvola Max. Pressione - Relief Valve : B=10:80bar - N=81:200bar (Standard) - R=201:380bar

I CODICI SONO RIFERITI AI MODELLI: DOPPIO EFFETTO - 3 POSIZIONI - RITORNO A MOLLA - A/B CHIUSI - FILETTI BSP - PREDISPOSTO PER CARRY-OVER
THESE CODES REFER TO: DOUBLE ACTING TYPE - 3 POSITIONS - SPRING RETURN - A/B PORTS CLOSED - BSP THREADS - MACHINED FOR CARRY-OVER



CURSORE SPOOL TYPE	Diagram
01 S.E. P > A	
02 S.E. P > B	
03 D.E. A/B > 1	
06 D.E. P/T/A/B > 1	
11 D.E. A/B > T	
16 D.E. A/B > 1	
con - with: A1Z1-R8	
26 D.E. A/B > 1	
con - with: R10-Z1	

POSIZIONATORE SPOOL CONTROL	Diagram
M1	
M2	
M3	
R1	
R2	
R3	
R4	
R5	
R8	
R10-Z1	

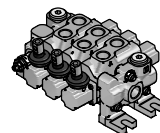
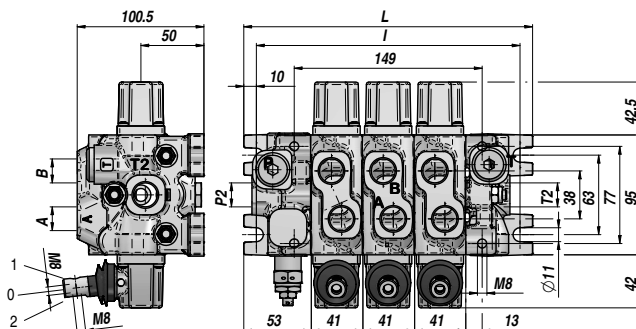
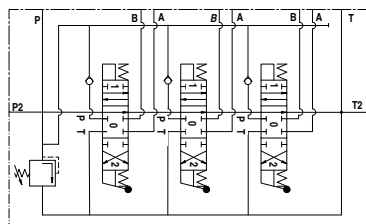
A RICHIESTA ON REQUEST	Description
A1/Z1	Comando manuale + distanziale per cursore 16 e posizionatore R8 Manual control + spacer for spool 16 and control R8
A1S	Leva di sicurezza Safety lever
A35	Manipolatore Joystick
RTL-D	Comando rotativo Rotary control
P1-N	Comando pneumatico Pneumatic control
A1D41	Comando elettrico ON/OFF doppio + comando manuale ON/OFF double electric control with manual control
M1-N1	Posizionatore D.E. per microswitch centralizzato (senza micro) Centralized microswitch D.A. spool control (without microswitch)
6D	Proseguimento di pressione Power beyond (carry over)
16D	Tappo centro chiuso Closed center plug

DISTRIBUTORE COMPONENTE
SECTIONAL VALVE

Qn
48 l/min

Qmax
60 l/min

QE 50



LEVA DA ORDINARE SEPARATAMENTE
LEVER TO BE ORDERED SEPARATELY
Code : DQ060002286299

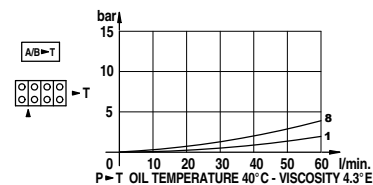
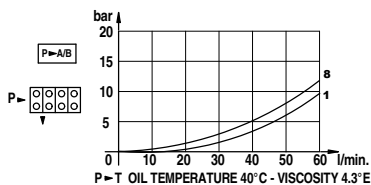
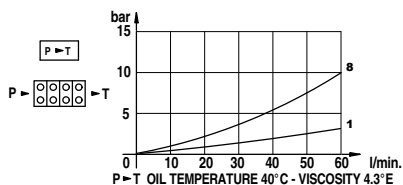
Codice Code	Tipo Type	N° sezioni Sections No.	Filetti - Threads					P MAX bar	P MAX U bar	P MAX S bar	L	I	kg
			A-B BSP	P BSP	T BSP	P2 BSP	T2 BSP						
DQE51SGN10S000	QE50/1-7SN/1x03.A1.M1/3D-S	1						375	375		147	127	4,20
DQE52SGN10S000	QE50/2-7SN/2x03.A1.M1/3D-S	2						375	375		188	168	6,10
DQE53SGN10S000	QE50/3-7SN/3x03.A1.M1/3D-S	3						375	375		229	209	8,00
DQE54SGN10S000	QE50/4-7SN/4x03.A1.M1/3D-S	4						350	350		270	250	9,90
DQE55SGN10S000	QE50/5-7SN/5x03.A1.M1/3D-S	5	1/2"	1/2"	1/2"	1/2"	1/2"	350	350	25	311	291	11,80
DQE56SGN10S000	QE50/6-7SN/6x03.A1.M1/3D-S	6						350	350		352	332	13,70
DQE57SGN10S000	QE50/7-7SN/7x03.A1.M1/3D-S	7						325	325		393	373	15,60
DQE58SGN10S000	QE50/8-7SN/8x03.A1.M1/3D-S	8						325	325		434	414	17,50

P MAX U = Pressione Max. sugli utilizzi - Max. pressure on ports

P MAX S = Pressione Max. allo scarico - Max. pressure in tank-line

Valvola Max. Pressione - Relief Valve : B=10:80bar - N=81:200bar (Standard) - R=201:380bar

I CODICI SONO RIFERITI AI MODELLI: DOPPIO EFFETTO - 3 POSIZIONI - RITORNO A MOLLA - A/B CHIUSI - FILETTI BSP - PREDISPOSTO PER CARRY-OVER
THESE CODES REFER TO: DOUBLE ACTING TYPE - 3 POSITIONS - SPRING RETURN - A/B PORTS CLOSED - BSP THREADS - MACHINED FOR CARRY-OVER



CURSORE SPOOL TYPE	Diagram
01 S.E. P > A	
02 S.E. P > B	
03 D.E. A/B & T	
06 D.E. P/T/A/B & T	
11 D.E. A/B > T	
16 D.E. A/B & T	 con - with: A1Z1-R8
26 D.E. A/B & T	 con - with: R10-Z1

POSIZIONATORE SPOOL CONTROL	Diagram
M1	
M2	
M3	
R1	
R2	
R3	
R4	
R5	
R8	
R10-Z1	

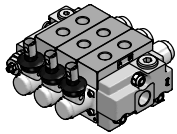
A RICHIESTA ON REQUEST	Description
A1/Z1	Comando manuale + distanziale per cursore 16 e posizionatore R8 Manual control + spacer for spool 16 and control R8
A1S	Leva di sicurezza Safety lever
A35	Manipolatore Joystick
RTL-D	Comando rotativo Rotary control
P1-N	Comando pneumatico Pneumatic control
A1D41	Comando elettrico ON/OFF doppio + comando manuale ON/OFF double electric control with manual control
M1-N1	Posizionatore D.E. per microswitch centralizzato (senza micro) Centralized microswitch D.A. spool control (without microswitch)
6D	Proseguimento di pressione Power beyond (carry over)
16D	Tappo centro chiuso Closed center plug

QS 80

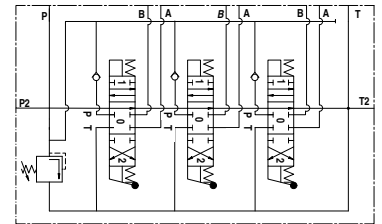
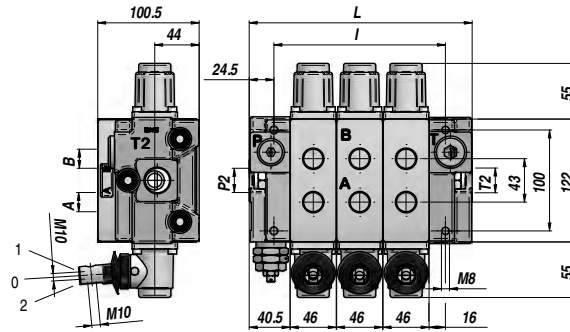
Qn
64 l/min

Q max
80 l/min

DISTRIBUTORE COMPONIBILE
SECTIONAL VALVE



LEVA DA ORDINARE SEPARATAMENTE
LEVER TO BE ORDERED SEPARATELY
Code : DQ060002701399



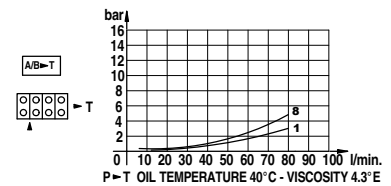
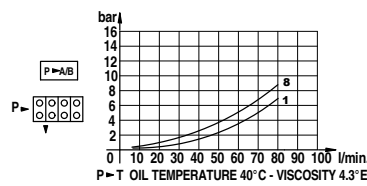
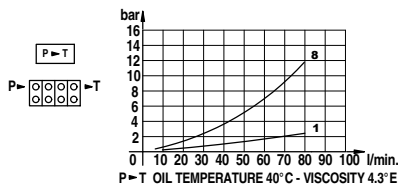
Codice Code	Tipo Type	N° sezioni Sections No.	Filetti - Threads					P MAX bar	P MAX U bar	P MAX S bar	L	l	kg
			A-B BSP	P BSP	T BSP	P2 BSP	T2 BSP						
DQS81SGN10S000	QS80/1-7SN/1x03.A1.M1/3D	1						350	350		129	78	8,10
DQS82SGN10S000	QS80/2-7SN/2x03.A1.M1/3D	2						350	350		175	124	11,90
DQS83SGN10S000	QS80/3-7SN/3x03.A1.M1/3D	3						350	350		221	170	15,80
DQS84SGN10S000	QS80/4-7SN/4x03.A1.M1/3D	4						320	320	25	267	216	19,70
DQS85SGN10S000	QS80/5-7SN/5x03.A1.M1/3D	5	1/2"	1/2"	3/4"	1/2"	3/4"	320	320		313	262	23,50
DQS86SGN10S000	QS80/6-7SN/6x03.A1.M1/3D	6						320	320		359	308	27,40
DQS87SGN10S000	QS80/7-7SN/7x03.A1.M1/3D	7						300	300		405	354	31,20
DQS88SGN10S000	QS80/8-7SN/8x03.A1.M1/3D	8						300	300		451	400	35,00

P MAX U = Pressione Max. sugli utilizzi - Max. pressure on ports

P MAX S = Pressione Max. allo scarico - Max. pressure in tank-line

Valvola Max. Pressione - Relief Valve : B=10:80bar - N=81:200bar (Standard) - R=201:380bar

I CODICI SONO RIFERITI AI MODELLI: DOPPIO EFFETTO - 3 POSIZIONI - RITORNO A MOLLA - A/B CHIUSI - FILETTI BSP - PREDISPOSTO PER CARRY-OVER
THESE CODES REFER TO: DOUBLE ACTING TYPE - 3 POSITIONS - SPRING RETURN - A/B PORTS CLOSED - BSP THREADS - MACHINED FOR CARRY-OVER



CURSORE SPOOL TYPE	Diagram
01 S.E. P > A	
02 S.E. P > B	
03 D.E. A/B > 1	
06 D.E. P/T/A/B > 1	
11 D.E. A/B > T	
16 D.E. A/B > 1 con - with: A1Z1-R8	
26 D.E. A/B > 1 con - with: R10-Z1	

POSIZIONATORE SPOOL CONTROL	Diagram
M1	
M2	
M3	
R1	
R2	
R3	
R4	
R5	
R8	
R10-Z1	

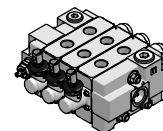
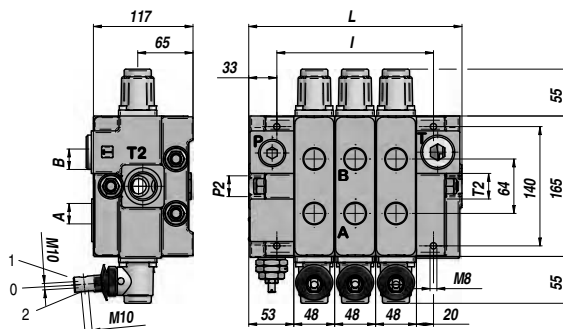
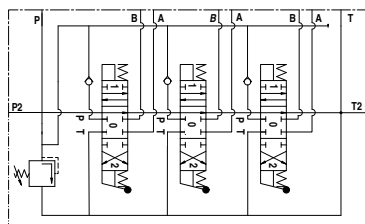
A RICHIESTA ON REQUEST	Description
A1/Z1	Comando manuale + distanziale per cursore 16 e posizionatore R8 Manual control + spacer for spool 16 and control R8
A1S	Leva di sicurezza Safety lever
A35	Manipolatore Joystick
RTL-D	Comando rotativo Rotary control
P1-N	Comando pneumatico Pneumatic control
A1D41	Comando elettrico ON/OFF doppio + comando manuale ON/OFF double electric control with manual control
D2	Comando elettroidraulico doppio + comando manuale Double electro-hydraulic control with manual control
M1-N1	Posizionatore D.E. per microswitch centralizzato (senza micro) Centralized microswitch D.A. spool control (without microswitch)
6D	Proseguimento di pressione Power beyond (carry over)
16D	Tappo centro chiuso Closed center plug

DISTRIBUTORE COMPONENTE
SECTIONAL VALVE

Qn
120 l/min

Q max
150 l/min

QS 130



LEVA DA ORDINARE SEPARATAMENTE
LEVER TO BE ORDERED SEPARATELY
Code : DQ060002701399

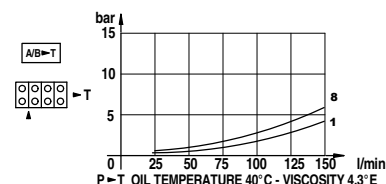
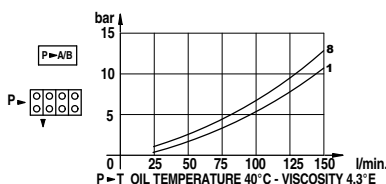
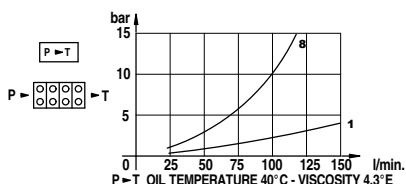
Codice Code	Tipo Type	N° sezioni Sections No.	Filetti - Threads					P MAX bar	P MAX U bar	P MAX S bar	L	I	kg
			A-B BSP	P BSP	T BSP	P2 BSP	T2 BSP						
DQST1SGN10S000	QS130/1-7SN/1x03.A1.M1/3D	1						375	375		154	88	16,60
DQST2SGN10S000	QS130/2-7SN/2x03.A1.M1/3D	2						375	375		202	136	22,40
DQST3SGN10S000	QS130/3-7SN/3x03.A1.M1/3D	3						375	375		250	184	28,20
DQST4SGN10S000	QS130/4-7SN/4x03.A1.M1/3D	4						350	350		298	232	34,10
DQST5SGN10S000	QS130/5-7SN/5x03.A1.M1/3D	5	3/4"	3/4"	1"	3/4"	1"	350	350	25	346	280	39,90
DQST6SGN10S000	QS130/6-7SN/6x03.A1.M1/3D	6						350	350		394	328	45,70
DQST7SGN10S000	QS130/7-7SN/7x03.A1.M1/3D	7						325	325		442	376	51,60
DQST8SGN10S000	QS130/8-7SN/8x03.A1.M1/3D	8						325	325		490	424	57,40

P MAX U = Pressione Max. sugli utilizzi - Max. pressure on ports

P MAX S = Pressione Max. allo scarico - Max. pressure in tank-line

Valvola Max. Pressione - Relief Valve : B=10:80bar - N=81:200bar (Standard) - R=201:380bar

I CODICI SONO RIFERITI AI MODELLI: DOPPIO EFFETTO - 3 POSIZIONI - RITORNO A MOLLA - A/B CHIUSI - FILETTI BSP - PREDISPOSTO PER CARRY-OVER
THESE CODES REFER TO: DOUBLE ACTING TYPE - 3 POSITIONS - SPRING RETURN - A/B PORTS CLOSED - BSP THREADS - MACHINED FOR CARRY-OVER



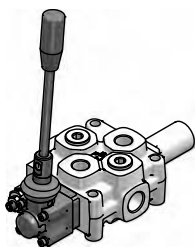
CURSORE SPOOL TYPE	Diagram
01 S.E. P > A	
02 S.E. P > B	
03 D.E. A/B †	
06 D.E. P/T/A/B †	
11 D.E. A/B > T	
16 D.E. A/B †	 con - with: A1Z1-R8
26 D.E. A/B †	 con - with: R10-Z1

POSIZIONATORE SPOOL CONTROL	Diagram
M1	
M2	
M3	
R1	
R2	
R3	
R4	
R5	
R8	
R10-Z1	

A RICHIESTA ON REQUEST	Description
A1/Z1	Comando manuale + distanziale per cursore 16 e posizionatore R8 Manual control + spacer for spool 16 and control R8
A1S	Leva di sicurezza Safety lever
A35	Manipolatore Joystick
RTL-D	Comando rotativo Rotary control
P1-N	Comando pneumatico Pneumatic control
D2	Comando elettroidraulico doppio + comando manuale Double electro-hydraulic control with manual control
M1-N1	Posizionatore D.E. per microswitch centralizzato (senza micro) Centralized microswitch D.A. spool control (without microswitch)
6D	Proseguimento di pressione Power beyond (carry over)
16D	Tappo centro chiuso Closed center plug

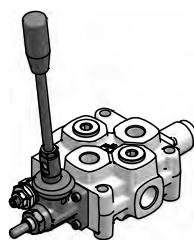
TIPI DI COMANDO
CONTROL TYPES

A1/Z1



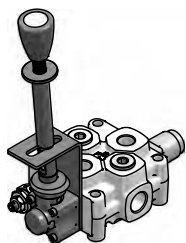
Comando manuale per 4a posizione flottante in tiro. Da abbinare al cursore "16" e al posizionale "R8".
Manual control for the 4th position floating pull. To be combined only with spool "16" and spool control "R8".

A1/PR



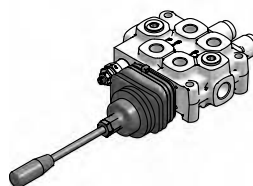
Comando manuale con perno per comando meccanico esterno.
Manual control with pin for an external mechanical control.

A1S



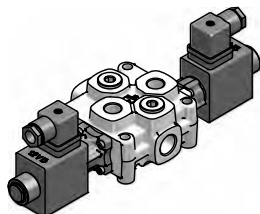
Comando manuale con leva di sicurezza.
Manual control with safety lever.

A35_



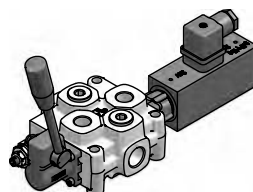
Comando manuale a cloche per azionamento di due cursori.
Dual axis joystick control to actuate two spools.

D9



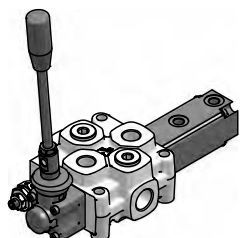
Comando elettrico diretto doppio ON-OFF con ritorno a molla.
ON/OFF Double direct electrical control with spring return.

A1-D41



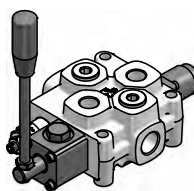
Comando elettrico diretto doppio ON-OFF con ritorno a molla + comando manuale.
ON/OFF Double direct electrical control with spring return + manual control.

P1-N



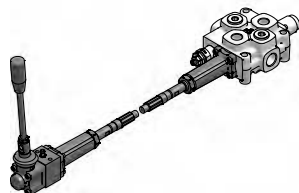
Comando pneumatico con ritorno a molla + comando manuale.
Pneumatic control with spring return + manual control.

RTL-D



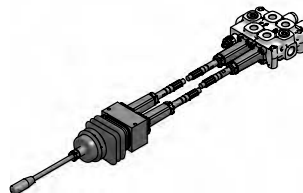
Comando manuale rotativo con arresto in posizione "0".
Rotary control with detent in position "0".

SL



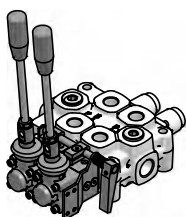
Comando manuale per azionamento a distanza con cavo flessibile.
Remote manual control with flexible cable.

SLA



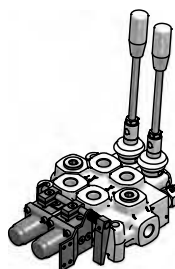
Comando manuale a cloche per azionamento a distanza di due cursori con cavi flessibili.
Remote dual axis control for simultaneous operation of two spools with flexible cables.

N1-A1



Comando manuale con azionamento micro-switch centralizzato (senza micro-switch).
Centralized micro-switch control (without micro-switch).

M1-N1



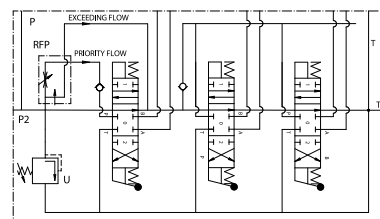
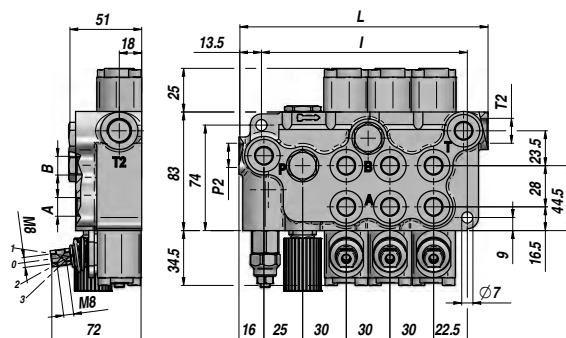
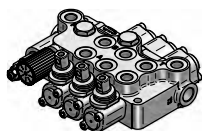
Posizionatore doppio effetto per comando micro-switch centralizzato.
Double acting spool control for centralized micro-switch operation.

BF 200

Qn
17 l/min

Q max
25 l/min

DISTRIBUTORE MONOBLOCCO + RFP
MONOBLOCK VALVE + RFP



Codice Code	Tipo Type	N° sezioni Sections No.	Filetti - Threads					PN bar	P MAX U bar	P MAX S bar	L	l	kg
			A-B BSP	P BSP	T BSP	P2 BSP	T2 BSP						
DBF0108001	BF 201/1/GU/MO A1	1									106	80	2,40
DBF0208001	BF 201/2/GU/MO A1 x 2	2									136	110	3,20
DBF0308001	BF 201/3/GU/MO A1 x 3	3	1/4"	1/4"	3/8"	3/8"	3/8"	250	320	80	166	140	4,00
DBF0408001	BF 201/4/GU/MO A1 x 4	4									196	170	4,80
DBF0508001	BF 201/5/GU/MO A1 x 5	5									226	200	5,60

RFP = Regolatore di flusso prioritario (compensato baricamente) - Priority control flow divider (pressure compensated)

PN = Pressione nominale - Nominal pressure

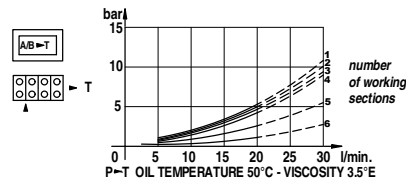
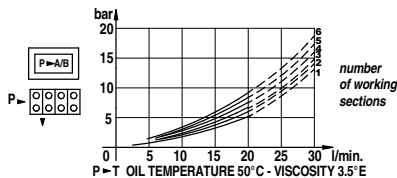
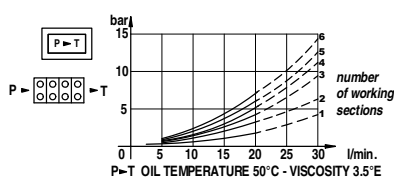
P MAX U = Pressione Max. sugli utilizzi - Max. pressure on ports

P MAX S = Pressione Max. allo scarico - Max. pressure in tank-line

Valvola Max. Pressione - Relief Valve : X=30:90bar (70) - U=80:230bar (140) (Standard) - K=150:300bar (200)

I CODICI SONO RIFERITI AI MODELLI : DOPPIO EFFETTO - 3 POSIZIONI - RITORNO A MOLLA - A/B CHIUSI - FILETTI BSP - PREDISPOSTO PER CARRY-OVER

THESE CODES REFER TO : DOUBLE ACTING TYPE - 3 POSITIONS - SPRING RETURN - A/B PORTS CLOSED - BSP THREADS - MACHINED FOR CARRY-OVER



CURSORE SPOOL TYPE	
A	
B	
C	
D	
K	

POSIZIONATORE SPOOL CONTROL	
1	
2	
3	
6	
7	
8	
16	

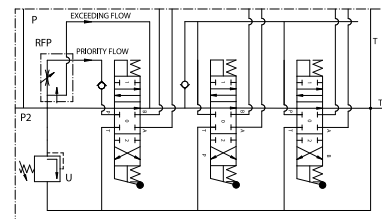
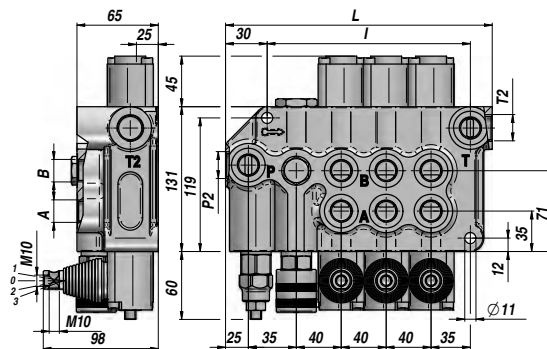
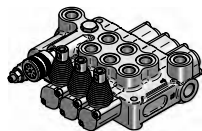
A RICHIESTA ON REQUEST	
MC	Comando manuale + camma Manual control with cam
MX	Leva di sicurezza Safety lever
DO	Comando a camma Cam control
JS	Manipolatore Joystick
MSW	Microinterruttore Microswitch
CO	Proseguimento di pressione Power beyond (carry over)

BF 700

Q_n
65 l/min

Q_{max}
90 l/min

DISTRIBUTORE MONOBLOCCO + RFP
MONOBLOCK VALVE + RFP



Codice Code	Tipo Type	N° sezioni Sections No.	Filetti - Threads					PN bar	P MAX U bar	P MAX S bar	L	I	kg
			A-B BSP	P BSP	T BSP	P2 BSP	T2 BSP						
DBF4110001	BF 701/1/GU/MO A1	1									157	106	6,60
DBF4211001	BF 701/2/GU/MO A1x2	2									197	146	9,00
DBF4308001	BF 701/3/GU/MO A1x3	3	1/2"	1/2"	1/2"	3/4"	3/4"	250	320	80	237	186	11,20
DBF4408001	BF 701/4/GU/MO A1x4	4									277	226	13,50

RFP = Regolatore di flusso prioritario (compensato baricamente) - Priority control flow divider (pressure compensated)

PN = Pressione nominale - Nominal pressure

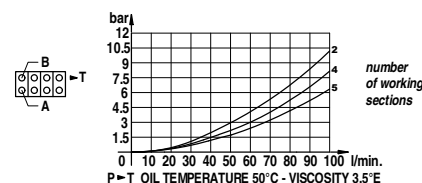
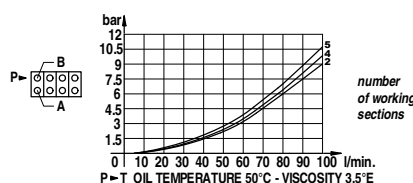
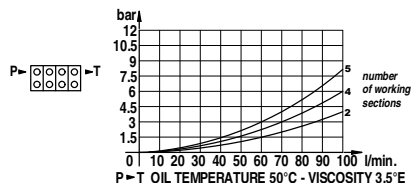
P MAX U = Pressione Max. sugli utilizzi - Max. pressure on ports

P MAX S = Pressione Max. allo scarico - Max. pressure in tank-line

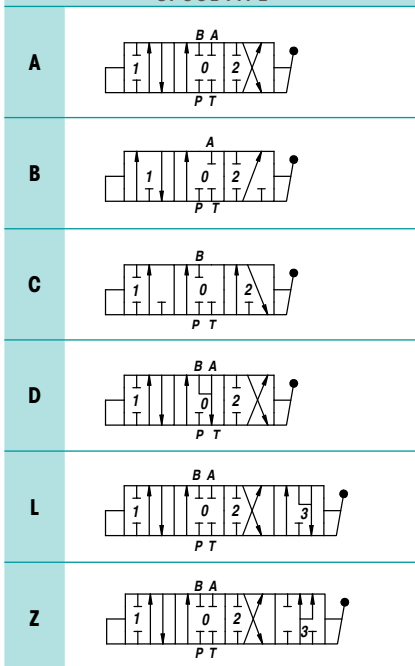
Valvola Max. Pressione - Relief Valve : X=30:90bar (70) - U=80:230bar (140) (Standard) - K=150:300bar (200)

I CODICI SONO RIFERITI AI MODELLI : DOPPIO EFFETTO - 3 POSIZIONI - RITORNO A MOLLA - A/B CHIUSI - FILETTI BSP - PREDISPOSTO PER CARRY-OVER

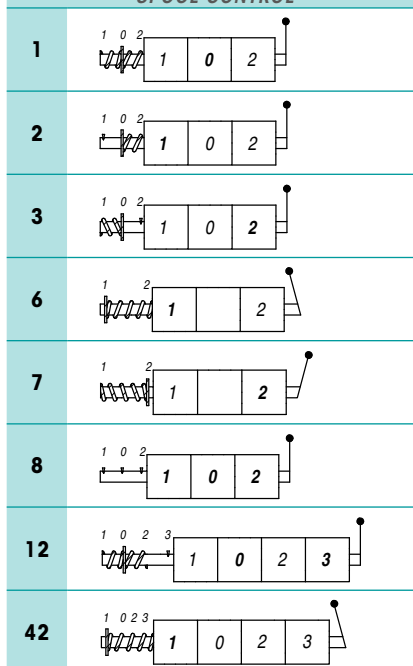
THESE CODES REFER TO : DOUBLE ACTING TYPE - 3 POSITIONS - SPRING RETURN - A/B PORTS CLOSED - BSP THREADS - MACHINED FOR CARRY-OVER



CURSORE SPOOL TYPE



POSIZIONATORE SPOOL CONTROL



A RICHIESTA ON REQUEST

MC	Comando manuale + camma Manual control with cam
DO	Comando a camma Cam control
JS	Manipolatore Joystick
1P	Comando pneumatico Pneumatic control
HO	Comando idraulico Hydraulic control
MSW	Microinterruttore Microswitch
CO	Proseguimento di pressione Power beyond (carry over)