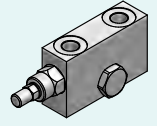


VALVOLE OVERCENTER OVERCENTER VALVES

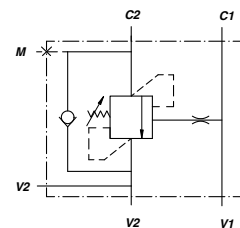
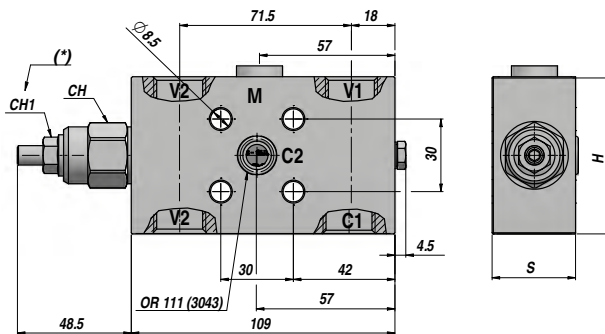
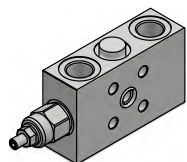
	Descrizione - Description	Type	Page
	VALVOLA OVERCENTER OVERCENTER VALVE	VOSL/N1116 VOSL/N1516	250
	VALVOLA OVERCENTER OVERCENTER VALVE	VODL/N1116	251
	VALVOLA OVERCENTER OVERCENTER VALVE	VBCD/A SE-FLV	251
	VALVOLA OVERCENTER OVERCENTER VALVE	VBCD/A DE-FLV	252
	VALVOLA OVERCENTER OVERCENTER VALVE	VBCD/A SE	252
	VALVOLA OVERCENTER OVERCENTER VALVE	VBCD/A DE	253
	VALVOLA OVERCENTER OVERCENTER VALVE	VBCD/FL SE	253
	VALVOLA OVERCENTER OVERCENTER VALVE	VBCD/FL DE	254
	VALVOLA OVERCENTER PER MOTORI "MPP-MPR-MCP-MCR" OVERCENTER VALVE FOR "MPP-MPR-MCP-MCR" MOTORS	VBCDF SE (MP-MR) VBCDF DE (MP-MR)	254 ÷ 255
	VALVOLA OVERCENTER PER MOTORI "MPS-MCS" OVERCENTER VALVE FOR "MPS-MCS" MOTORS	VBCDF SE (MS) VBCDF DE (MS)	255 ÷ 256

VOSL/N1116

NEW!

SEMPLICE EFFETTO
SINGLE ACTING

VALVOLA OVERCENTER
OVERCENTER VALVE



Codice Code	V1-V2 BSP	C1 BSP	C2	M BSP	Q MAX l/min	P MAX bar	PILOT RATIO	Tipo Type	CH	CH1	H	S	kg
V515022106	3/8"	3/8"	ø8.5	1/4"	60	350	1:4	VOSL/N1116/38F1/G5.p4/ac	24	13	55	29.5	1,30
V515032106	1/2"	1/2"	ø8.5	1/4"	60	350	1:4	VOSL/N1116/12F1/G5.p4/ac	24	13	65	34.5	1,75

(*)= CH1 : Coppia di serraggio - Tightening torque : Max 15 Nm

MOLLA - SPRING : Type "G5" 50-350 bar (Taratura standard - Standard setting 350 bar)

A RICHIESTA - ON REQUEST :

MOLLA - SPRING : Type "G3" 5-210 bar (Taratura standard - Standard setting 150 bar)

RAPPORTO DI PILOTAGGIO - PILOT RATIO : 1:8

MATERIALE CORPO : ACCIAIO
BODY MATERIAL : STEEL

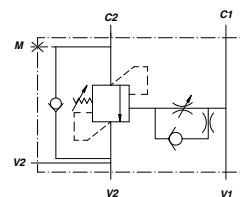
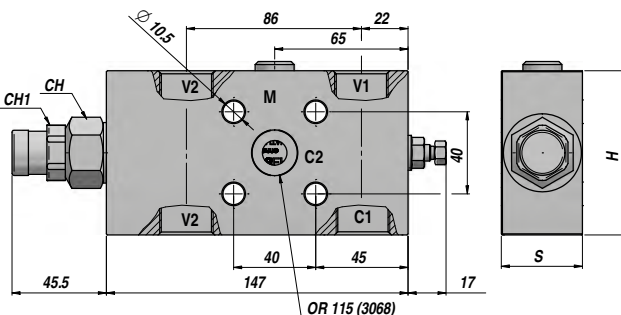
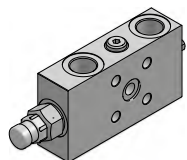
FLANGIABILE
FACE MOUNTING

VOSL/N1516

NEW!

SEMPLICE EFFETTO
SINGLE ACTING

VALVOLA OVERCENTER
OVERCENTER VALVE



Codice Code	V1-V2 BSP	C1 BSP	C2	M BSP	Q MAX l/min	P MAX bar	PILOT RATIO	Tipo Type	CH	CH1	H	S	kg
V515642106	3/4"	3/4"	ø14.8	1/4"	150	400	1:4	VOSL/N1516/34F1/G7.p4.PR/ac	27	24	80	39.5	3,00

MOLLA - SPRING : Type "G7" 150-400 bar (Taratura standard - Standard setting 350 bar)

A RICHIESTA - ON REQUEST :

MOLLA - SPRING : Type "G3" 5-210 bar (Taratura standard - Standard setting 150 bar)

RAPPORTO DI PILOTAGGIO - PILOT RATIO : 1:8

MATERIALE CORPO : ACCIAIO
BODY MATERIAL : STEEL

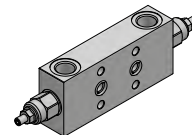
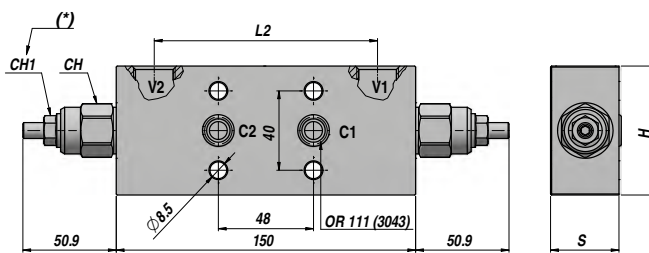
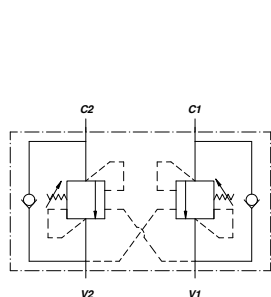
FLANGIABILE
FACE MOUNTING

VALVOLA OVERCENTER
OVERCENTER VALVE

DOPPIO EFFETTO
DOUBLE ACTING

NEW!

VODL/N116



Codice Code	V1-V2 BSP	C1-C2	M	Q MAX l/min	P MAX bar	PILOT RATIO	Tipo Type	L2	CH	CH1	H	S	kg
V555122106	3/8"	Ø8.5	-	60	350	1:4	VODL/N1116/38F2/G5.p4/ac	112	24	13	55.0	29.5	1,80
V555132107	1/2"	Ø8.5	-	60	350	1:4	VODL/N1116/12F2/G5.p4/ac	112	24	13	65.0	34.5	2,40

(*)= CH1 : Coppia di serraggio - Tightening torque : Max 15 Nm

MOLLA - SPRING : Type "G5" 50-350 bar (Taratura standard - Standard setting 350 bar)

A RICHIESTA - ON REQUEST :

MOLLA - SPRING : Type "G3" 5-210 bar (Taratura standard - Standard setting 150 bar)

RAPPORTO DI PILOTAGGIO - PILOT RATIO : 1:8

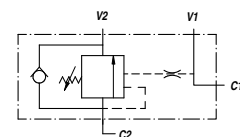
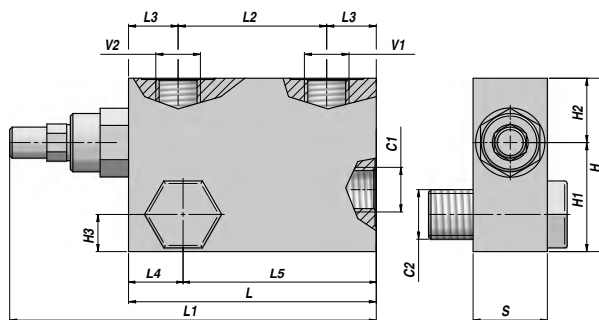
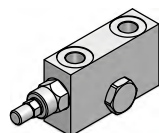
MATERIALE CORPO : ACCIAIO
BODY MATERIAL : STEEL

FLANGIABILE
FACE MOUNTING

VALVOLA OVERCENTER
OVERCENTER VALVE

SEMPLICE EFFETTO
SINGLE ACTING

VBCD/A SE-FLV



Codice Code	V1 - V2 BSP	C1 - C2 BSP	Q MAX l/min	P MAX bar	PILOT RATIO	Tipo Type	L	L1	L2	L3	L4	L5	H1	H2	H3	H	S	kg
V2190.0392FLV	3/8"	3/8"	40	350	1:4.5	VBCD/A SE-FLV 3/8"	100	150	60	20	22	78	40	30	15	70	30	1,35
V2190.0412FLV	1/2"	1/2"	60	350	1:4.5	VBCD/A SE-FLV 1/2"	100	150	60	20	24	76	40	30	15	70	30	1,31

Taratura standard - Standard setting : 320 bar

Taratura minima - Minimum setting : 200 bar

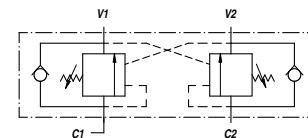
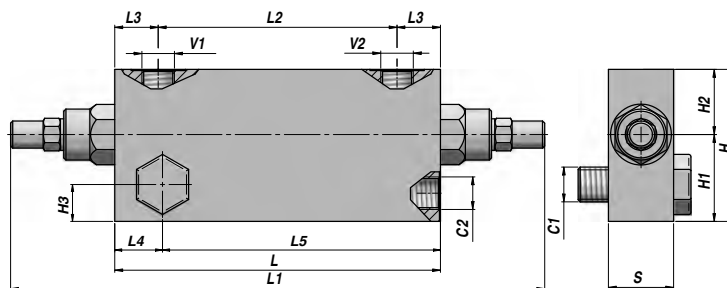
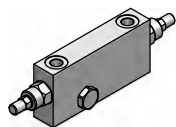
MATERIALE CORPO : ACCIAIO
BODY MATERIAL : STEEL

MONTAGGIO SU CILINDRO
CYLINDER MOUNTING

VBCD/A DE-FLV

DOPPIO EFFETTO
DOUBLE ACTING

VALVOLA OVERCENTER
OVERCENTER VALVE



Codice Code	V1 - V2 BSP	C1 - C2 BSP	Q MAX l/min	P MAX bar	PILOT RATIO	Tipo Type	L	L1	L2	L3	L4	L5	H1	H2	H3	H	S	kg
V2290.0422FLV	3/8"	3/8"	40	350	1:4.5	VBCD/A DE-FLV 3/8"	150	250	110	20	22	128	44	26	17	70	30	2,41
V2290.0432FLV	1/2"	1/2"	60	350	1:4.5	VBCD/A DE-FLV 1/2"	150	250	110	20	24	126	50	30	19	80	30	2,70

Taratura standard - Standard setting : 320 bar

Taratura minima - Minimum setting : 200 bar

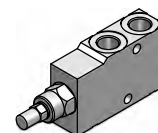
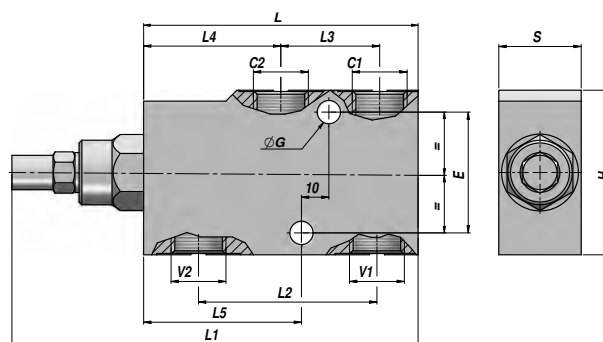
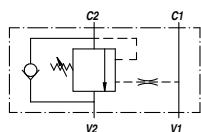
MATERIALE CORPO : ACCIAIO
BODY MATERIAL : STEEL

MONTAGGIO SU CILINDRO
CYLINDER MOUNTING

VBCD/A SE

SEMPLICE EFFETTO
SINGLE ACTING

VALVOLA OVERCENTER
OVERCENTER VALVE



Codice Code	V1 - V2 BSP	C1 - C2 BSP	Q MAX l/min	P MAX bar	PILOT RATIO	Tipo Type	L	L1	L2	L3	L4	L5	ØG	E	H	S	kg
V2190.A400	1/4"	1/4"	25	350	1:4.5	VBCD/A SE 1/4"	76	132	49.0	25	39.0	41.5	6,5	28	55	30	0,97
V2190.A600	3/8"	3/8"	40	350	1:4.5	VBCD/A SE 3/8"	100	149	60.0	30	50.0	55.0	8,5	44	60	30	1,26
V2190.A800	1/2"	1/2"	60	350	1:4.5	VBCD/A SE 1/2"	100	149	65.0	36	50.0	57.5	8,5	44	60	30	1,20
V2190.A120	3/4"	3/4"	100	350	1:5.5	VBCD/A SE 3/4"	127	187	85.0	46	62.5	75.0	8,5	44	80	35	2,37
V2190.A160	1"	1"	150	350	1:5.5	VBCD/A SE 1"	156	213	109.5	70	63.0	75.0	10,5	70	90	50	4,64

Taratura standard - Standard setting : 320 bar

Taratura minima - Minimum setting : 200 bar

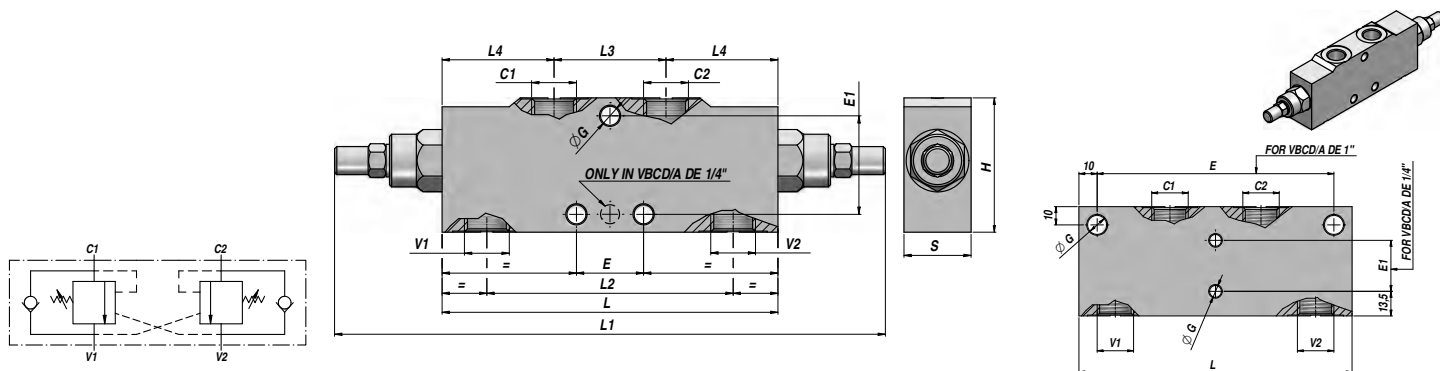
MATERIALE CORPO : ACCIAIO
BODY MATERIAL : STEEL

MONTAGGIO IN LINEA
LINE MOUNTING

VALVOLA OVERCENTER
OVERCENTER VALVE

DOPPIO EFFETTO
DOUBLE ACTING

VBCD/A DE



Codice Code	V1 - V2 BSP	C1 - C2 BSP	Q MAX l/min	P MAX bar	PILOT RATIO	Tipo Type	L	L1	L2	L3	L4	ØG	E	E1	H	S	kg
V2290.A400	1/4"	1/4"	25	350	1:4.5	VBCD/A DE 1/4"	125	255	94	38	43.5	6.5	-	28	55	30	1,69
V2290.A600	3/8"	3/8"	40	350	1:4.5	VBCD/A DE 3/8"	150	248	110	50	50.0	8.5	30	44	60	30	1,97
V2290.A800	1/2"	1/2"	60	350	1:4.5	VBCD/A DE 1/2"	150	248	110	50	50.0	8.5	30	44	60	30	1,92
V2290.A120	3/4"	3/4"	100	350	1:5.5	VBCD/A DE 3/4"	190	304	143	65	62.5	8.5	44	64	80	35	3,80
V2290.A160	1"	1"	150	350	1:5.5	VBCD/A DE 1"	210	319	158	66	72.0	10.5	190	-	90	50	6,68

Taratura standard - Standard setting : 320 bar

Taratura minima - Minimum setting : 200 bar

MATERIALE CORPO : ACCIAIO

MONTAGGIO IN LINEA

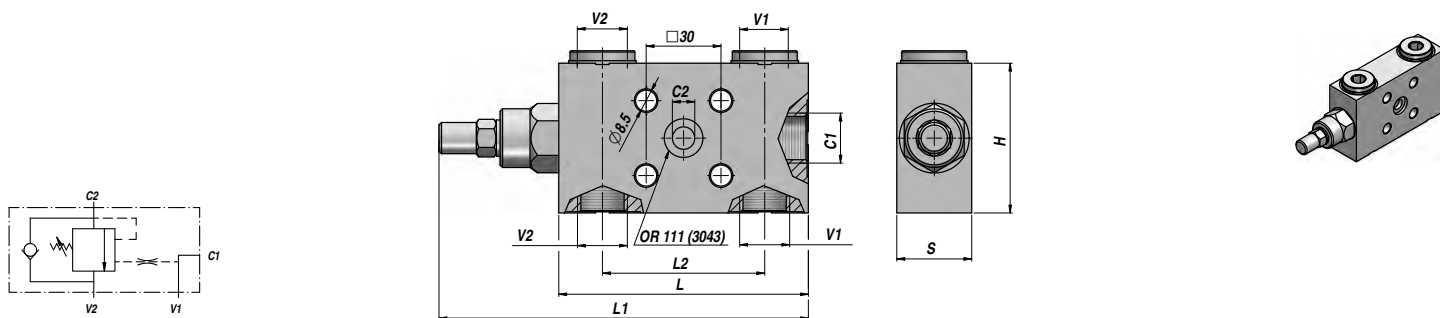
BODY MATERIAL : STEEL

LINE MOUNTING

VALVOLA OVERCENTER
OVERCENTER VALVE

SEMPLICE EFFETTO
SINGLE ACTING

VBCD/FL SE



Codice Code	V1 - V2 BSP	C1 BSP	C2	Q MAX l/min	P MAX bar	PILOT RATIO	Tipo Type	L	L1	L2	H	S	kg
V2190.B600	3/8"	3/8"	Ø9	40	350	1:4.5	VBCD/FL SE 3/8"	100	149	60	60	30	1,25
V2190.B800	1/2"	1/2"	Ø9	60	350	1:4.5	VBCD/FL SE 1/2"	100	149	65	60	30	1,21

Taratura standard - Standard setting : 320 bar

Taratura minima - Minimum setting : 200 bar

MATERIALE CORPO : ACCIAIO

FLANGIABILE

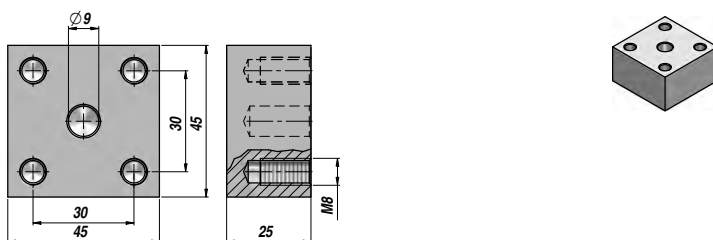
BODY MATERIAL : STEEL

FACE MOUNTING

Basetta per VBCD...FL/SE - Sub-plate for VBCD...FL/SE

Codice Code	Tipo Type
V9990.8000	B8000 - 45x45x25

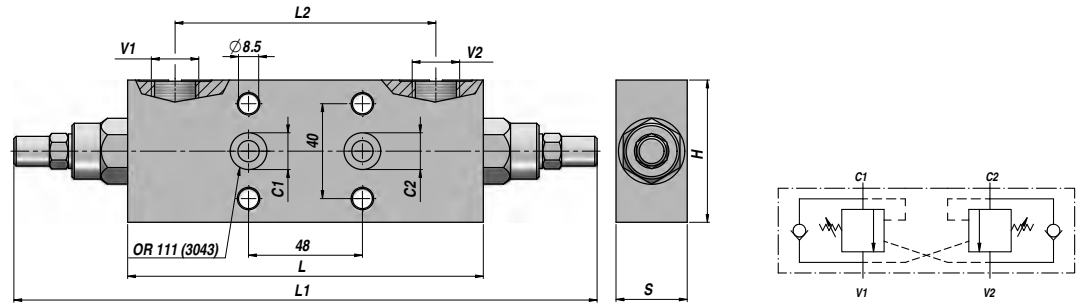
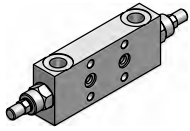
MATERIALE - MATERIAL : ACCIAIO - STEEL



VBCD/FL DE

DOPPIO EFFETTO
DOUBLE ACTING

VALVOLA OVERCENTER
OVERCENTER VALVE



Codice Code	V1 - V2 BSP	C1 - C2	Q MAX l/min	P MAX bar	PILOT RATIO	Tipo Type	L	L1	L2	H	S	kg
V2290.B600	3/8"	Ø9	40	350	1:4.5	VBCD/FL DE 3/8"	150	248	110	60	30	2,01
V2290.B800	1/2"	Ø9	60	350	1:4.5	VBCD/FL DE 1/2"	150	248	110	60	30	1,98

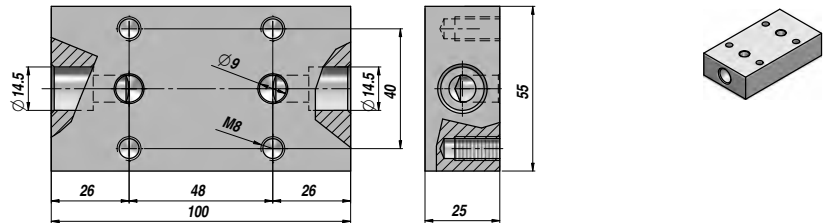
Taratura standard - Standard setting : 320 bar Taratura minima - Minimum setting : 200 bar

MATERIALE CORPO : ACCIAIO FLANGIABILE
BODY MATERIAL : STEEL FACE MOUNTING

Basetta per VBCD...FL/DE - Sub-plate for VBCD...FL/DE

Codice Code	Tipo Type
V9990.8500	B8500 - 100x55x25

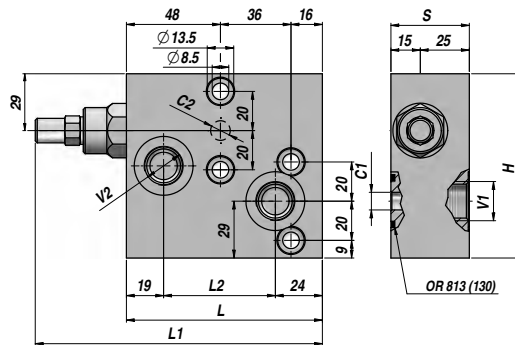
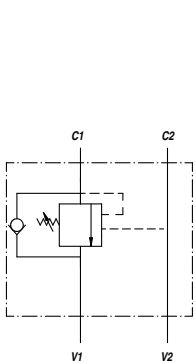
MATERIALE - MATERIAL : ACCIAIO - STEEL



VBCDF-SE (MP-MR)

SEMPLICE EFFETTO
SINGLE ACTING

VALVOLA OVERCENTER PER MOTORI MPP-MPR-MCP-MCR
OVERCENTER VALVE FOR "MPP-MRP-MCP-MCR" MOTORS



Codice Code	V1 - V2 BSP	C1 - C2	Q MAX l/min	P MAX bar	PILOT RATIO	Tipo Type	L	L1	L2	H	S	kg
V2190.F008	1/2"	Ø9	50	350	1:4.5	VBCDF-SE 1/2"-PR	100	149	57	94	40	2,69

Taratura standard - Standard setting : 300- bar Taratura minima - Minimum setting : 200 bar

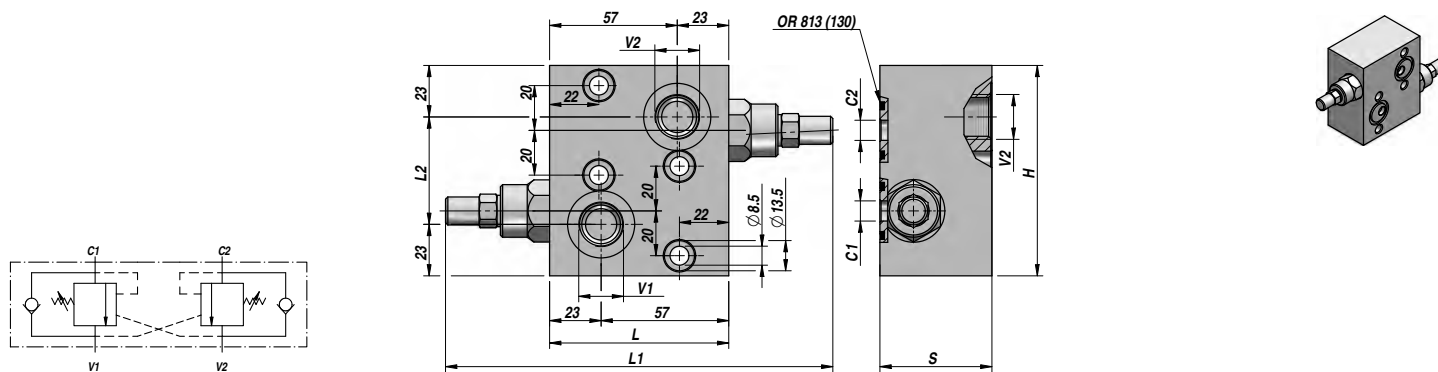
A RICHIESTA - ON REQUEST :
VBCDF/SF-SE ...CON SBLOCCO FRENO - WITH BRAKE RELEASE PORT

MATERIALE CORPO : ACCIAIO FLANGIABILE
BODY MATERIAL : STEEL FACE MOUNTING

VALVOLA OVERCENTER PER MOTORI MPP-MPR-MCP-MCR
OVERCENTER VALVE FOR "MPP-MRP-MCP-MCR" MOTORS

DOPPIO EFFETTO
DOUBLE ACTING

VBCDF-DE (MP-MR)



Codice Code	V1 - V2 BSP	C1 - C2	Q MAX l/min	P MAX bar	PILOT RATIO	Tipo Type	L	L1	L2	H	S	kg
V2290.F008	1/2"	Ø9	50	350	1:4.5	VBCDF-DE 1/2"-PR	80	172	48	94	50	2,71

Taratura standard - Standard setting : 300- bar Taratura minima - Minimum setting : 200 bar

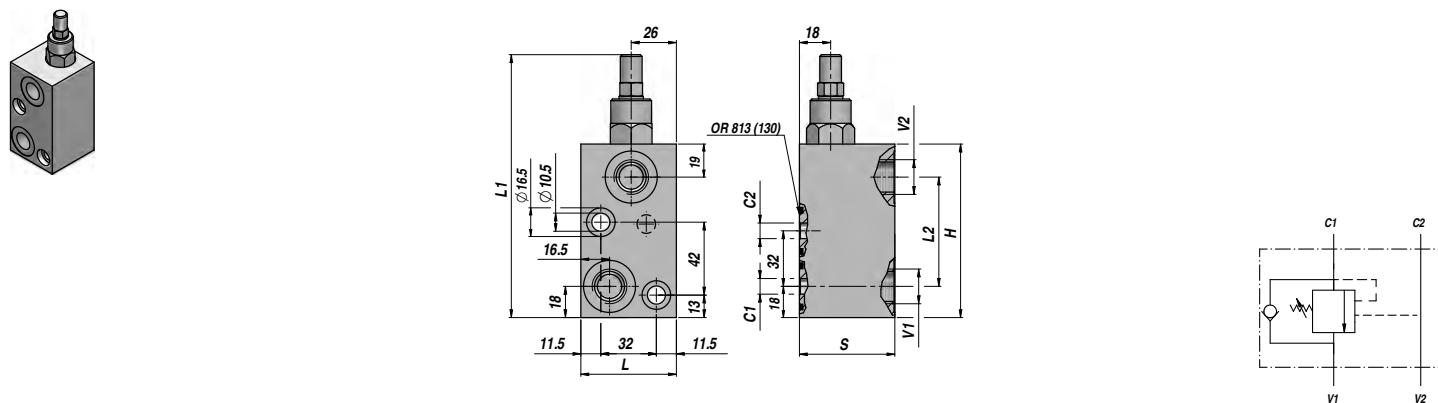
A RICHIESTA - ON REQUEST :
VBCDF/SF-DE ...CON SBLOCCO FRENO - WITH BRAKE RELEASE PORT

MATERIALE CORPO : ACCIAIO FLANGIABILE
BODY MATERIAL : STEEL FACE MOUNTING

VALVOLA OVERCENTER PER MOTORI MPS-MCS
OVERCENTER VALVE FOR "MPS-MCS" MOTORS

SEMPLICE EFFETTO
SINGLE ACTING

VBCDF-SE (MS)



Codice Code	V1 - V2 BSP	C1 - C2	Q MAX l/min	P MAX bar	PILOT RATIO	Tipo Type	L	L1	L2	H	S	kg
V2190.F416	1/2"	Ø9	50	350	1:4.5	VBCDF-SE 1/2"-S	55	148	63	100	55	1,70

Taratura standard - Standard setting : 300- bar Taratura minima - Minimum setting : 200 bar

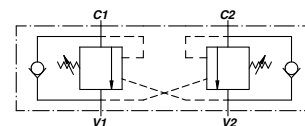
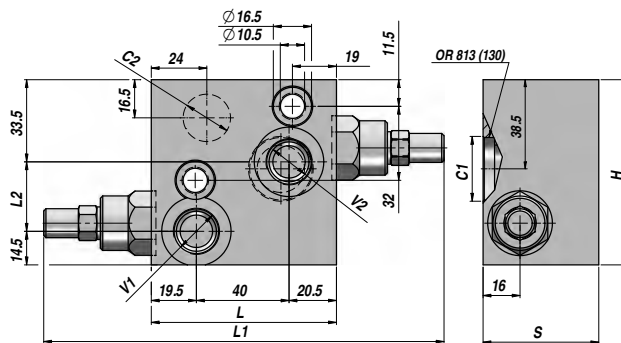
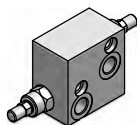
A RICHIESTA - ON REQUEST :
VBCDF/SF-SE ...CON SBLOCCO FRENO - WITH BRAKE RELEASE PORT

MATERIALE CORPO : ACCIAIO FLANGIABILE
BODY MATERIAL : STEEL FACE MOUNTING

VBCDF-DE (MS)

**DOPPIO EFFETTO
DOUBLE ACTING**

**VALVOLA OVERCENTER PER MOTORI MPS-MCS
OVERCENTER VALVE FOR "MPS-MCS" MOTORS**



Codice Code	V1 - V2 BSP	C1 - C2	Q MAX l/min	P MAX bar	PILOT RATIO	Tipo Type	L	L1	L2	H	S	kg
V2290.F426	1/2"	Ø9	50	350	1:4.5	VBCDF-DE 1/2"-S	80	170	30	80	50	2,15

Taratura standard - Standard setting : 300- bar

Taratura minima - Minimum setting : 200 bar

A RICHIESTA - ON REQUEST :

VBCDF/SF-DE ...CON SBLOCCO FRENO - WITH BRAKE RELEASE PORT

MATERIALE CORPO : ACCIAIO
BODY MATERIAL : STEEL

FLANGIABILE
FACE MOUNTING