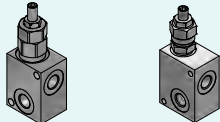
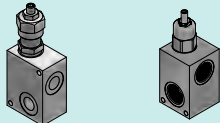

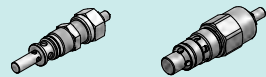
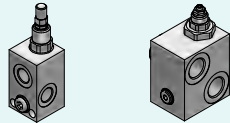
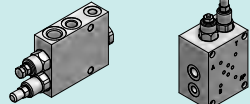
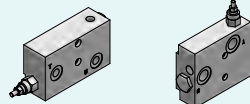
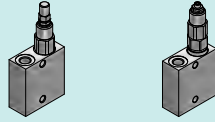
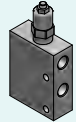
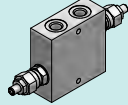
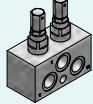
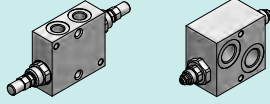
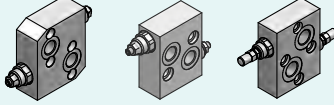
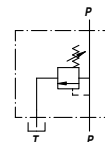
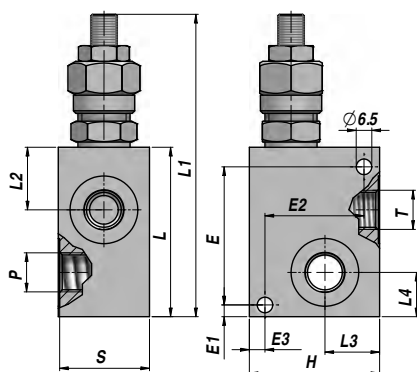
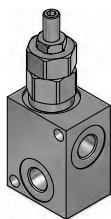


## VALVOLE CONTROLLO PRESSIONE PRESSURE CONTROL VALVES

	Descrizione - Description	Type	Page
	VALVOLA LIMITATRICE DI PRESSIONE <i>RELIEF VALVE</i>	VMDL 20 VMD 35	214
	VALVOLA LIMITATRICE DI PRESSIONE <i>RELIEF VALVE</i>	VMD 80 VMD-S 150	215
	VALVOLA LIMITATRICE DI PRESSIONE A CARTUCCIA <i>RELIEF VALVE - CARTRIDGE TYPE</i>	VMDC 20 VMDC 35	216
	VALVOLA LIMITATRICE DI PRESSIONE A CARTUCCIA <i>RELIEF VALVE - CARTRIDGE TYPE</i>	VMDC 80 VMDC 150	217
	VALVOLA LIMITATRICE DI PRESSIONE <i>RELIEF VALVE</i>	VMP/L VMP VMPP	218 ÷ 219
	VALVOLA DI ESCLUSIONE <i>UNLOADING VALVE</i>	VABP VABP/FL	219 ÷ 220
	VALVOLA DI ESCLUSIONE <i>UNLOADING VALVE</i>	VEP-FLP	220
	VALVOLA DI SEQUENZA <i>SEQUENCE VALVE</i>	VS2C VSQ-APP	221
	VALVOLA RIDUTTRICE DI PRESSIONE <i>PRESSURE REDUCING VALVE</i>	VRP VRPRL	222
	VALVOLA ANTIURTO DOPPIA <i>DUAL CROSS-OVER RELIEF VALVE</i>	VBDC 35 VBDC 80	223
	VALVOLA ANTIURTO DOPPIA <i>DUAL CROSS-OVER RELIEF VALVE</i>	VMDA-CSV	224
	VALVOLA ANTIURTO DOPPIA <i>DUAL CROSS-OVER RELIEF VALVE</i>	VAU/DE VAU/DE 1"	224 ÷ 225
	VALVOLA ANTIURTO PER MOTORI <i>CROSS LINE RELIEF VALVE FOR MOTORS</i>	VAU/DE MP-R-S-T	225

**VMDL 20**

VALVOLA LIMITATRICE DI PRESSIONE  
RELIEF VALVE



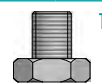
Codice Code	P BSP	T BSP	Q MAX l/min	P MAX bar	Tipo Type	L	L1 max	L2	L3	L4	E	E1	E2	E3	H	S	kg
VAG003.0210B1	1/4"	1/4"	20	210	VMDL A20-010-B1	45	89	17	20	13	42	5	30	5	40	30	0,24
VAG003.0220B1	3/8"	3/8"	20	210	VMDL A20-020-B1	45	89	17	20	13	42	5	30	5	40	30	0,24

MOLLA - SPRING : A= 5:60 bar - B= 50:240 bar ( Standard ) - C= 90:350 bar - D= 20:130 bar

1= Vite - Screw ( Standard )

REGOLAZIONE - SETTING : 2= Volantino - Knob

3= Vite + cappello - Screw + protection cup



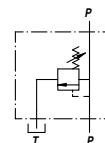
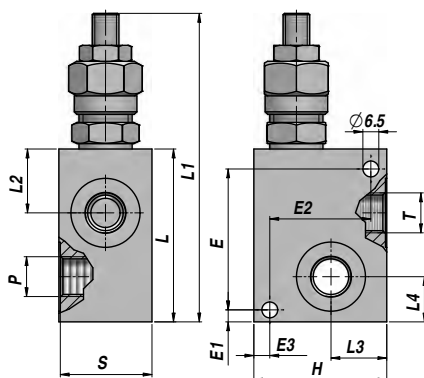
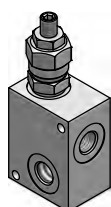
A RICHIESTA - ON REQUEST: ACCIAIO - STEEL (VMDL-S - 350 bar)

MATERIALE CORPO : ALLUMINIO  
BODY MATERIAL : ALUMINIUM

MONTAGGIO IN LINEA  
LINE MOUNTING

**VMD 35**

VALVOLA LIMITATRICE DI PRESSIONE  
RELIEF VALVE



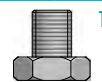
Codice Code	P BSP	T BSP	Q MAX l/min	P MAX bar	Tipo Type	L	L1 max	L2	L3	L4	E	E1	E2	E3	H	S	kg
VAG002.0320B1	3/8"	3/8"	35	210	VMD A35-020-B1	65	129	24	20	17	53	5	34	6	50	35	0,40
VAG002.0330B1	1/2"	1/2"	35	210	VMD A35-030-B1	65	129	24	20	17	53	5	34	6	50	35	0,39

MOLLA - SPRING : A= 5:50 bar - B= 40:210 bar ( Standard ) - C= 100:350 bar

1= Vite - Screw ( Standard )

REGOLAZIONE - SETTING : 2= Volantino - Knob

3= Vite + cappello - Screw + protection cup



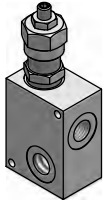
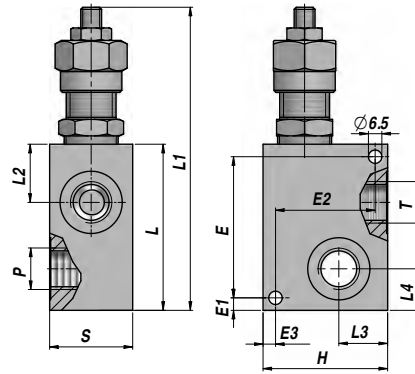
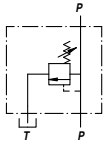
A RICHIESTA - ON REQUEST: ACCIAIO - STEEL (VMD-S - 350 bar)

MATERIALE CORPO : ALLUMINIO  
BODY MATERIAL : ALUMINIUM

MONTAGGIO IN LINEA  
LINE MOUNTING

VALVOLA LIMITATRICE DI PRESSIONE  
RELIEF VALVE

VMD 80



Codice Code	P BSP	T BSP	Q MAX l/min	P MAX bar	Tipo Type	L	L1 max	L2	L3	L4	E	E1	E2	E3	H	S	kg
VAG002.0830B1	1/2"	1/2"	80	210	VMD A80-030-B1	80	157	28	23.5	20	68	6	48	6	60	40	0,72
VAG002.0840B1	3/4"	3/4"	80	210	VMD A80-040-B1	80	157	28	23.5	20	68	6	48	6	60	40	0,72

MOLLA - SPRING : A= 5:50 bar - B= 20:260 bar ( Standard ) - C= 120:350 bar

1= Vite - Screw ( Standard )

REGOLAZIONE - SETTING : 2= Volantino - Knob

3= Vite + cappello - Screw + protection cup



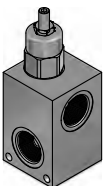
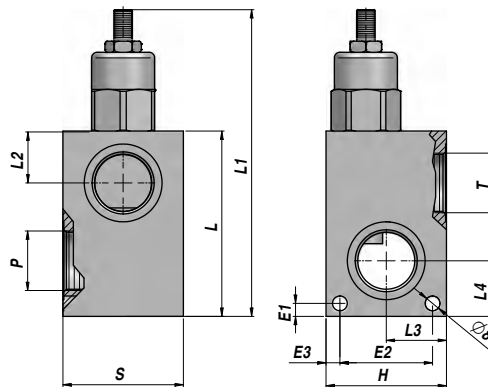
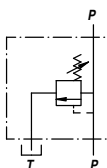
A RICHIESTA - ON REQUEST: ACCIAIO - STEEL (VMD-S - 350 bar)

MATERIALE CORPO : ALLUMINIO  
BODY MATERIAL : ALUMINIUM

MONTAGGIO IN LINEA  
LINE MOUNTING

VALVOLA LIMITATRICE DI PRESSIONE (DIFFERENZIALE)  
RELIEF VALVE (DIFFERENTIAL TYPE)

VMD-S 150



Codice Code	P BSP	T BSP	Q MAX l/min	P MAX bar	Tipo Type	L	L1 max	L2	L3	L4	E1	E2	E3	H	S	kg
VSG002.1550B1	1"	1"	150	350	VMD-S150-050-B1	100	166	28	32.5	30	7	50	7.5	65	65	2,76
VSG002.1560B1	1"1/4	1"1/4	150	350	VMD-S150-060-B1	100	166	28	32.5	30	7	50	7.5	65	65	2,43

MOLLA - SPRING : B= 30:350 bar ( Standard )

1= Vite - Screw (Standard)

REGOLAZIONE - SETTING : 2= Volantino - Knob

3= Vite + cappello - Screw + protection cup

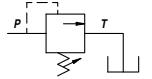
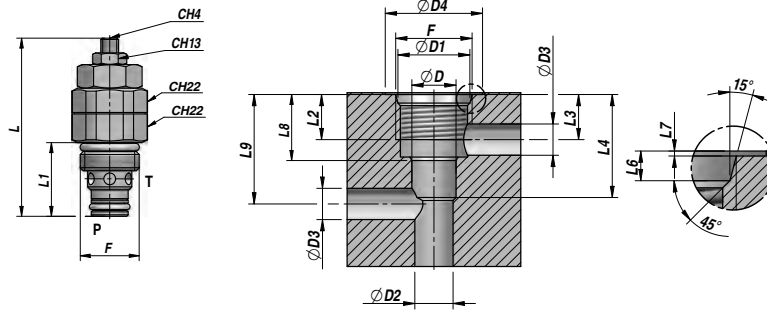


MATERIALE CORPO : ACCIAIO  
BODY MATERIAL : STEEL

MONTAGGIO IN LINEA  
LINE MOUNTING

**VMDC 20**

VALVOLA LIMITATRICE DI PRESSIONE A CARTUCCIA  
RELIEF VALVE - CARTRIDGE TYPE



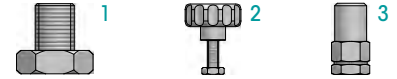
Codice Code	F	Q MAX l/min	P MAX bar	Tipo Type	L	L1	ØD (H7)	ØD4	ØD3	L2	L8	L9	L3	L4	ØD2 max	ØD1	L6	L7	kg
VCS001.020B10	3/4-16UNF	20	400	VMDC 20-B1	73.5	27.5	12.7	28	9	15	20.6	32	13	31	11	20.7	2.7	0.5	0,12

MOLLA - SPRING : A= 5:60 bar - B= 50:240 bar ( Standard ) - C= 90:350 bar - D= 20:130 bar

1= Vite - Screw ( Standard )

REGOLAZIONE - SETTING : 2= Volantino - Knob

3= Vite + cappello - Screw + protection cup

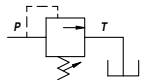
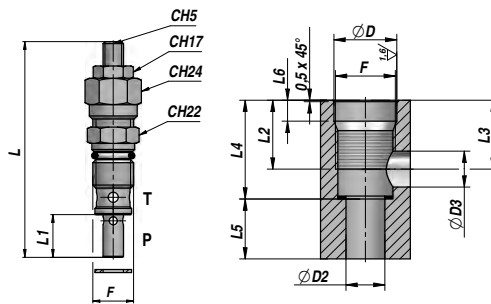


MATERIALE CORPO : ACCIAIO  
BODY MATERIAL : STEEL

CARTUCCIA  
CARTRIDGE

**VMDC 35**

VALVOLA LIMITATRICE DI PRESSIONE A CARTUCCIA  
RELIEF VALVE - CARTRIDGE TYPE



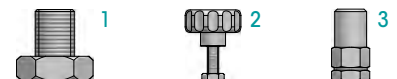
Codice Code	F	Q MAX l/min	P MAX bar	Tipo Type	L max	L1	ØD (H7)	ØD3	L2	L3 max	L4 ±0,1	L5 min	ØD2 max	L6	kg
VCM001.035B10	M20x1.5	35	400	VMDC 35-B1	100	21	21	12	23	23	33	20	13	7	0,16

MOLLA - SPRING : A= 5:50 bar - B= 40:210 bar ( Standard ) - C= 100:350 bar

1= Vite - Screw ( Standard )

REGOLAZIONE - SETTING : 2= Volantino - Knob

3= Vite + cappello - Screw + protection cup

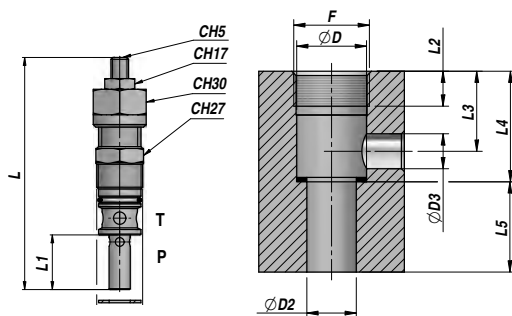
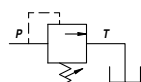


MATERIALE CORPO : ACCIAIO  
BODY MATERIAL : STEEL

CARTUCCIA  
CARTRIDGE

VALVOLA LIMITATRICE DI PRESSIONE A CARTUCCIA  
RELIEF VALVE - CARTRIDGE TYPE

VMDC 80



Codice Code	F	Q MAX l/min	P MAX bar	Tipo Type	L max	L1	ØD (H7)	ØD3	L2	L3	L4 ±0,1	L5 min	ØD2	kg
VCM001.080B10	M26x1.5	80	350	VMDC 80-B1	148	31.5	24	12	12	27.5	38	31	17	0,33

MOLLA - SPRING : A= 5:50 bar - B= 20:260 bar ( Standard ) - C= 120:350 bar

1= Vite - Screw ( Standard )

REGOLAZIONE - SETTING : 2= Volantino - Knob

3= Vite + cappello - Screw + protection cup

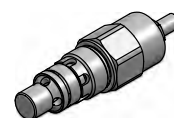
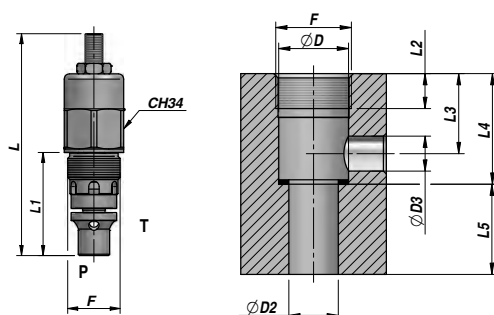
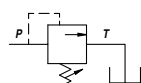


MATERIALE CORPO : ACCIAIO  
BODY MATERIAL : STEEL

CARTUCCIA  
CARTRIDGE

VALVOLA LIMITATRICE DI PRESSIONE ( DIFFERENZIALE A CARTUCCIA SCOMPOSTA )  
RELIEF VALVE ( BUILT-IN DIFFERENTIAL CARTRIDGE )

VMDC 150



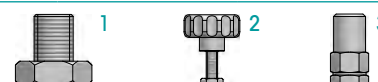
Codice Code	F	Q MAX l/min	P MAX bar	Tipo Type	L max	L1	ØD (H7)	D3	L2	L3	L4 ±0,1	L5 min	ØD2	kg
VCM001.150B10	M30x1.5	150	350	VMDC 150-B1	127	59	26	10	16	21	39	22	24	0,47

MOLLA - SPRING : B= 30:350 bar ( Standard )

1= Vite - Screw ( Standard )

REGOLAZIONE - SETTING : 2= Volantino - Knob

3= Vite + cappello - Screw + protection cup

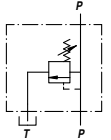
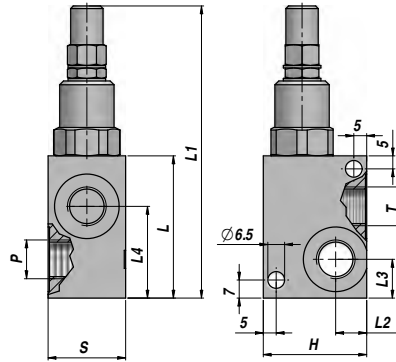
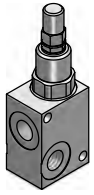


MATERIALE CORPO : ACCIAIO  
BODY MATERIAL : STEEL

CARTUCCIA  
CARTRIDGE

VMP/L

VALVOLA LIMITATRICE DI PRESSIONE  
RELIEF VALVE



Codice Code	P BSP	T BSP	Q MAX l/min	P MAX bar	Tipo Type	L	L1	L2	L3	L4	H	S	kg
V0120.0003	1/4"	1/4"	30	300	VMP-L 1/4" C	52	114	12	13	34.0	40	30	0,47
V0120.0004	3/8"	3/8"	40	300	VMP-L 3/8" C	52	117	12	15	35.5	40	30	0,47

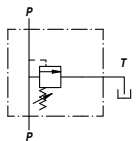
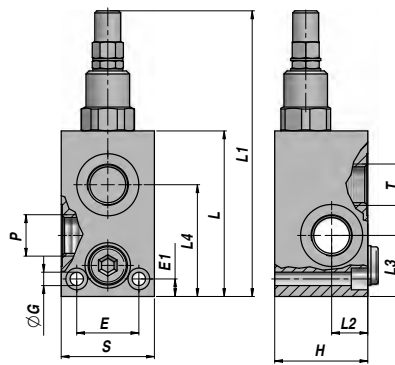
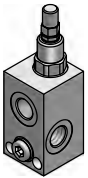
MOLLA - SPRING : A= 10:50 bar - C= 10:180 bar ( Standard ) - E= 80:300 bar

MATERIALE CORPO : ACCIAIO  
BODY MATERIAL : STEEL

MONTAGGIO IN LINEA  
LINE MOUNTING

VMP

VALVOLA LIMITATRICE DI PRESSIONE  
RELIEF VALVE



Codice Code	P BSP	T BSP	Q MAX l/min	P MAX bar	Tipo Type	L	L1	L2	L3	L4	ØG	E	E1	H	S	kg
V0120.0006	3/8"	3/8"	45	300	VMP 3/8" C	72	134	15.0	26.0	49.5	6.5	26	8.5	40	40	0,82
V0120.0008	1/2"	1/2"	70	300	VMP 1/2" C	77	139	17.5	29.5	54.0	6.5	30	8.5	45	45	1,06
V0120.0012	3/4"	3/4"	90	300	VMP 3/4" C	92	154	17.5	35.0	68.0	8.5	32	10.0	50	50	1,47

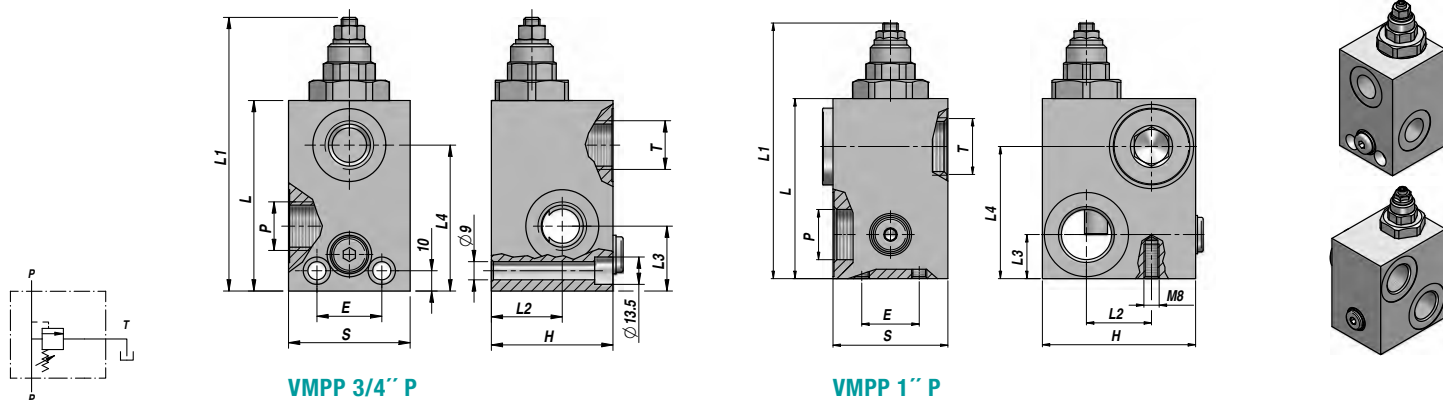
MOLLA - SPRING : A= 10:50 bar - B= 20:100 bar - C= 10:180 bar ( Standard ) - D= 50:250 bar - E= 80:300 bar

MATERIALE CORPO : ACCIAIO  
BODY MATERIAL : STEEL

MONTAGGIO IN LINEA  
LINE MOUNTING

VALVOLA LIMITATRICE DI PRESSIONE (DIFFERENZIALE)  
RELIEF VALVE (DIFFERENTIAL TYPE)

VMPP



Codice Code	P BSP	T BSP	Q MAX l/min	P MAX bar	Tipo Type	L	L1	L2	L3	L4	E	H	S	kg
V0120.3512	3/4"	3/4"	120	400	VMPP 3/4" P	94	146	35	32	70	32	60	60	2,20
V0120.3516	1"	1"	160	400	VMPP 1" P	94	146	34	23	71	30	60	60	2,90

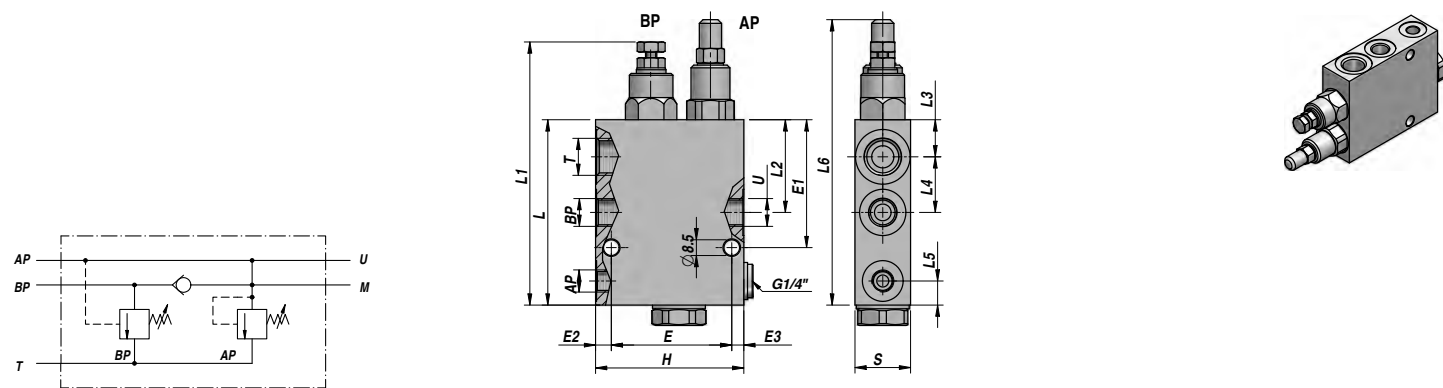
MOLLA - SPRING : N= 20:200 bar - P= 50:400 bar ( Standard )

MATERIALE CORPO : ACCIAIO  
BODY MATERIAL : STEEL

MONTAGGIO IN LINEA  
LINE MOUNTING

VALVOLA DI ESCLUSIONE ALTA-BASSA PRESSIONE  
"HI-LOW" UNLOADING VALVE

VABP



Codice Code	AP BSP	BP-U BSP	T BSP	Q MAX l/min	P MAX bar	Tipo Type	L	L1	L2	L3	L4	L5	L6	E	E1	E2	E3	H	S	kg
V1290.0512	1/4"	3/8"	1/2"	60	300	VABP 3/8"	100	142	50.0	20	30.0	13	155	65	69	8.5	6.5	80	30	1,75
V1290.0513	3/8"	1/2"	3/4"	80	350	VABP 1/2"	105	147	54.0	18	36.0	15	160	65	73	17.0	8.0	90	35	2,33
V1290.0514	1/2"	3/4"	1"	120	350	VABP 3/4"	140	187	52.5	20	42.5	20	212	65	95	27.0	8.0	100	40	3,97

MOLLA "BP" - "BP" SPRING : B= 20:80 bar ( Standard )

MOLLA "AP" - "AP" SPRING : D= 50:350 bar ( Standard )

MATERIALE CORPO : ACCIAIO  
BODY MATERIAL : STEEL

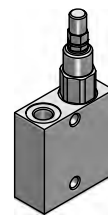
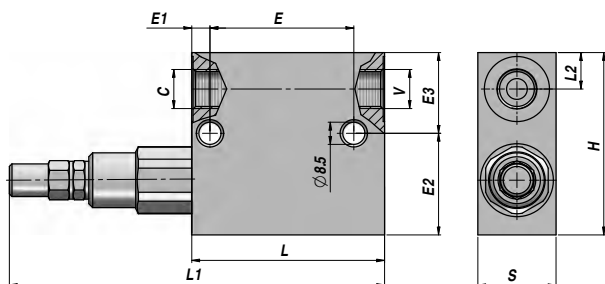
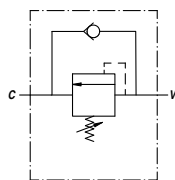
MONTAGGIO IN LINEA  
LINE MOUNTING





VALVOLA DI SEQUENZA  
SEQUENCE VALVE

VS2C



Codice Code	C BSP	V BSP	Q MAX l/min	P MAX bar	Tipo Type	L	L1	L2	E	E1	E2	E3	H	S	kg
V1390.0640	3/8"	3/8"	35	350	VS2C 3/8" C	74	146	14	55	7	39	31	70	30	1,17
V1390.0660	1/2"	1/2"	70	350	VS2C 1/2" C	80	152	15	55	7	37	33	70	30	1,13
V1390.D665	3/4"	3/4"	110	400	VS2C 3/4" D	100	164	20	80	10	50	50	100	40	2,90

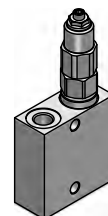
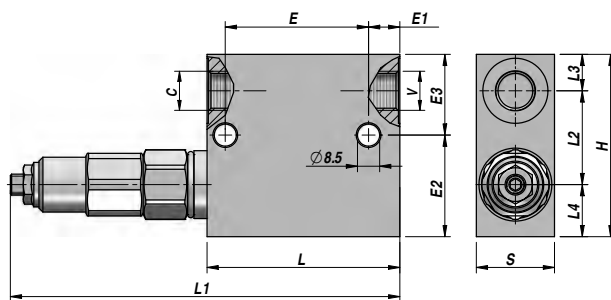
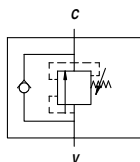
MOLLA - SPRING VS2C 3/8" - 1/2": A= 10:50 bar - B= 20:100 bar - C= 30:180 bar ( Standard ) - D= 50:250 bar - E= 80:300 bar  
 MOLLA - SPRING VS2C 3/4" : C= 20:200 bar - D= 50:400 bar ( Standard )

MATERIALE CORPO : ACCIAIO  
 BODY MATERIAL : STEEL

MONTAGGIO IN LINEA  
 LINE MOUNTING

VALVOLA DI SEQUENZA CON ANNULLAMENTO DELLA PRESSIONE PRIMARIA  
 SEQUENCE VALVE WITH ZERO SETTING ON PRIMARY PRESSURE

VSQ-APP



Codice Code	C BSP	V BSP	Q MAX l/min	P MAX bar	Tipo Type	L	L1	L2	L3	L4	E	E1	E2	E3	H	S	kg
V1390.0642	3/8"	3/8"	35	350	VSQAPP 3/8" C	74	149	36	14	20	55	12	39	31	70	30	1,25
V1390.0662	1/2"	1/2"	70	350	VSQAPP 1/2" C	80	155	36	15	19	55	18	37	33	70	30	1,28
V1390.0667	3/4"	3/4"	110	400	VSQAPP 3/4" Q	100	190	55	20	25	80	10	50	50	100	40	2,85

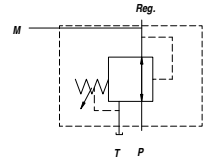
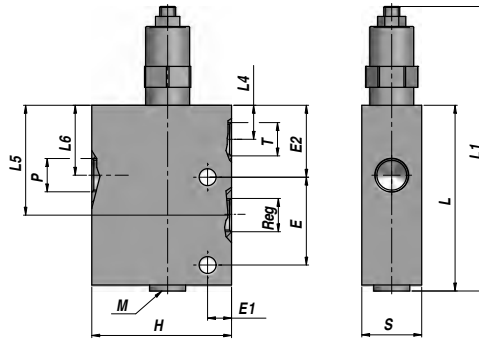
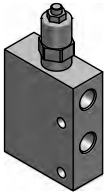
MOLLA - SPRING (3/8" - 1/2") : A= 10:50 bar - B= 20:100 bar - C= 10:180 bar ( Standard ) - D= 50:250 bar - E= 80:300 bar  
 MOLLA - SPRING (3/4") : N= 20:200 bar - Q= 50:400 bar ( Standard )

MATERIALE CORPO : ACCIAIO  
 BODY MATERIAL : STEEL

MONTAGGIO IN LINEA  
 LINE MOUNTING

**VRP**

**VALVOLA RIDUTTRICE DI PRESSIONE  
PRESSURE REDUCING VALVE**



Codice Code	P-T-Reg BSP	M BSP	Q MAX l/min	P MAX bar	Tipo Type	L	L1	L4	L5	L6	E	E1	E2	H	S	kg
V1190.0704165	3/8"	1/4"	30	350	VRP 3/8"-B	90	168	17	55	35	44	12	36	70	30	1,53
V1190.0706165	1/2"	1/4"	30	350	VRP 1/2"-B	90	168	17	55	35	44	12	36	70	30	1,47

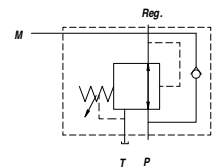
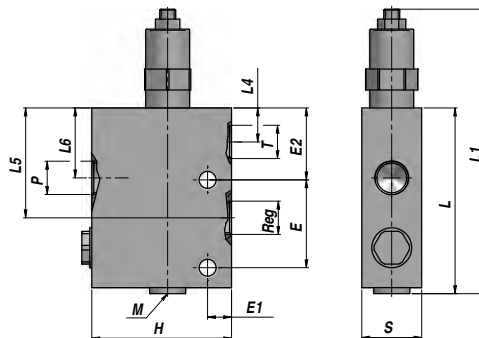
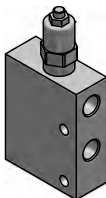
MOLLA - SPRING : A= 10:60 bar - B= 35:180 bar ( Standard )

MATERIALE CORPO : ACCIAIO  
BODY MATERIAL : STEEL

MONTAGGIO IN LINEA  
LINE MOUNTING

**VRPRL**

**VALVOLA RIDUTTRICE DI PRESSIONE CON RITORNO LIBERO  
PRESSURE REDUCING VALVE WITH CHECK VALVE**



Codice Code	P-T-Reg BSP	M BSP	Q MAX l/min	P MAX bar	Tipo Type	L	L1	L4	L5	L6	E	E1	E2	H	S	kg
V1190.0705165	3/8"	1/4"	30	350	VRPRL 3/8"-B	90	168	17	55	35	44	12	36	70	30	1,53
V1190.0707165	1/2"	1/4"	30	350	VRPRL 1/2"-B	90	168	17	55	35	44	12	36	70	30	1,47

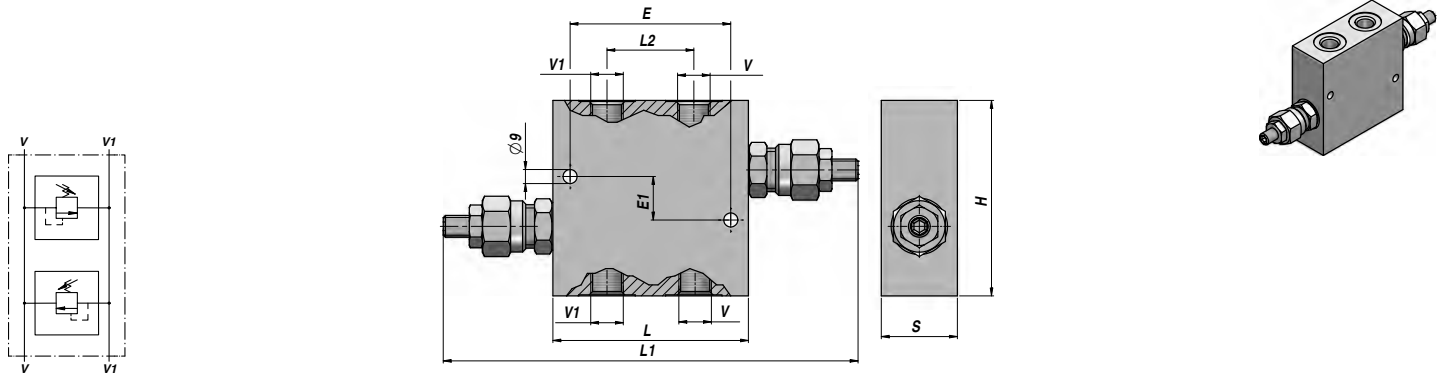
MOLLA - SPRING : A= 10:60 bar - B= 35:180 bar ( Standard )

MATERIALE CORPO : ACCIAIO  
BODY MATERIAL : STEEL

MONTAGGIO IN LINEA  
LINE MOUNTING

VALVOLA ANTIURTO DOPPIA  
DUAL CROSS-OVER RELIEF VALVE

**VBDC 35**



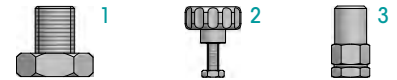
Codice Code	V BSP	V1 BSP	Q MAX l/min	P MAX bar	Tipo Type	L	L1	L2	E	E1	H	S	kg
VAG022.0320B1	3/8"	3/8"	35	210	VBDC A35-020-B1	90	218	40	74	20	90	35	0,80
VAG022.0330B1	1/2"	1/2"	35	210	VBDC A35-030-B1	90	218	40	74	20	90	35	0,80

MOLLA - SPRING : A= 5:50 bar - B= 40:210 bar ( Standard ) - C= 100:350 bar

1= Vite - Screw ( Standard )

REGOLAZIONE - SETTING : 2= Volantino - Knob

3= Vite + cappello - Screw + protection cup



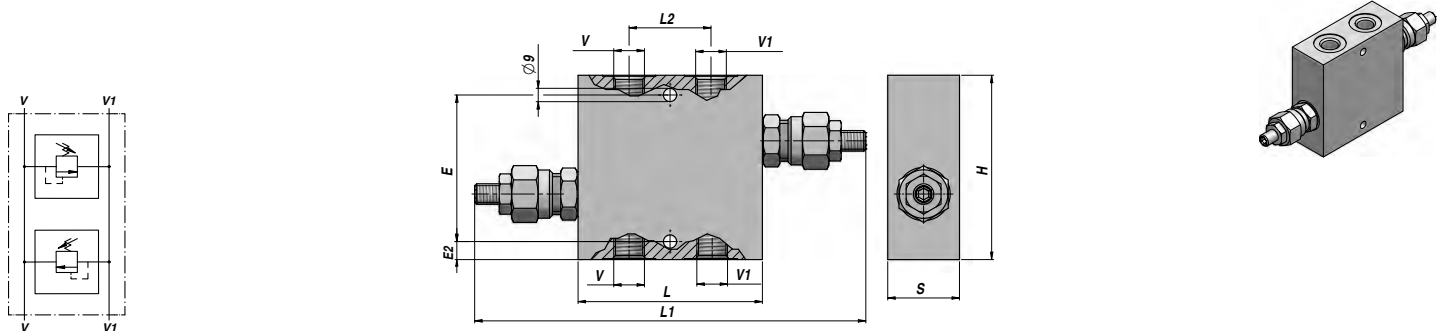
A RICHIESTA - ON REQUEST : ACCIAIO - STEEL (VBDC-S - 350 bar)

MATERIALE CORPO : ALLUMINIO  
BODY MATERIAL : ALUMINIUM

MONTAGGIO IN LINEA  
LINE MOUNTING

VALVOLA ANTIURTO DOPPIA  
DUAL CROSS-OVER RELIEF VALVE

**VBDC 80**



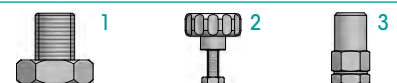
Codice Code	V BSP	V1 BSP	Q MAX l/min	P MAX bar	Tipo Type	L	L1	L2	E	E1	H	S	kg
VAG022.0830B1	1/2"	1/2"	80	210	VBDC A80-030-B1	94	250	38	65	-	100	40	1,65
VAG022.0840B1	3/4"	3/4"	80	210	VBDC A80-040-B1	94	250	38	65	-	100	40	1,60

MOLLA - SPRING : A= 5:50 bar - B= 20:260 bar ( Standard ) - C= 120:350 bar

1= Vite - Screw ( Standard )

REGOLAZIONE - SETTING : 2= Volantino - Knob

3= Vite + cappello - Screw + protection cup



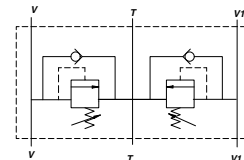
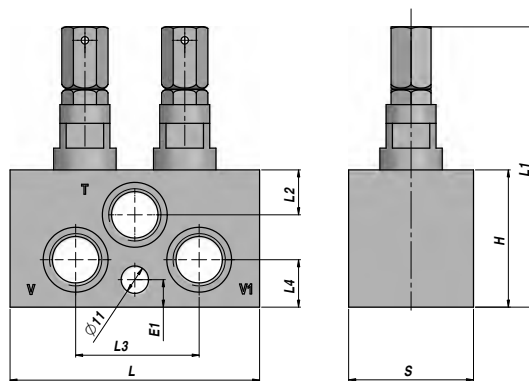
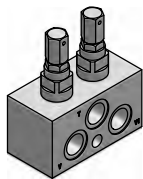
A RICHIESTA - ON REQUEST : ACCIAIO - STEEL (VBDC-S - 350 bar)

MATERIALE CORPO : ALLUMINIO  
BODY MATERIAL : ALUMINIUM

MONTAGGIO IN LINEA  
LINE MOUNTING

**VMDA-CSV**

VALVOLA ANTIURTO DOPPIA (DIFFERENZIALE) + ANTICAVITAZIONE  
DUAL CROSS RELIEF VALVE (DIFFERENTIAL TYPE) + ANTICAVITATION



Codice Code	V-V1 BSP	T BSP	Q MAX l/min	P MAX bar	Tipo Type	L	L1 max	L2	L3	L4	E1	H	S	kg
VAG020.0320D3	3/8"	3/8"	45	350	VMDA-CSV-020-D3	100	118	37	64	19	10	55	50	1,85
VAG020.0330D3	1/2"	1/2"	70	350	VMDA-CSV-030-D3	100	118	37	64	19	10	55	50	1,85

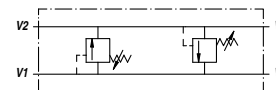
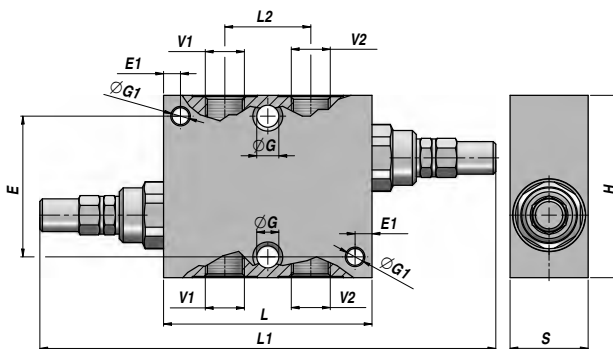
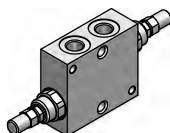
MOLLA - SPRING : C= 95:125 bar - D= 125:160 bar ( Standard )

MATERIALE CORPO : ACCIAIO  
BODY MATERIAL : STEEL

MONTAGGIO IN LINEA  
LINE MOUNTING

**VAU/DE**

VALVOLA ANTIURTO DOPPIA  
DUAL CROSS-OVER RELIEF VALVE



Codice Code	V1 BSP	V2 BSP	Q MAX l/min	P MAX bar	Tipo Type	L	L1	L2	ØG	E	ØG1	E1	H	S	kg
V0590.0438	1/4"	1/4"	30	300	VAU/DE 1/4" C	60	156	26	-	54	6.5	6.5	70	30	0,99
V0590.0440	3/8"	3/8"	45	300	VAU/DE 3/8" C	80	176	33	8.5	54	-	-	70	30	1,21
V0590.0450	1/2"	1/2"	70	300	VAU/DE 1/2" C	80	200	38	8.5	54	-	-	70	30	1,15
V0590.0460	3/4"	3/4"	110	300	VAU/DE 3/4" C	95	215	44	8.5	54	-	-	80	35	1,68

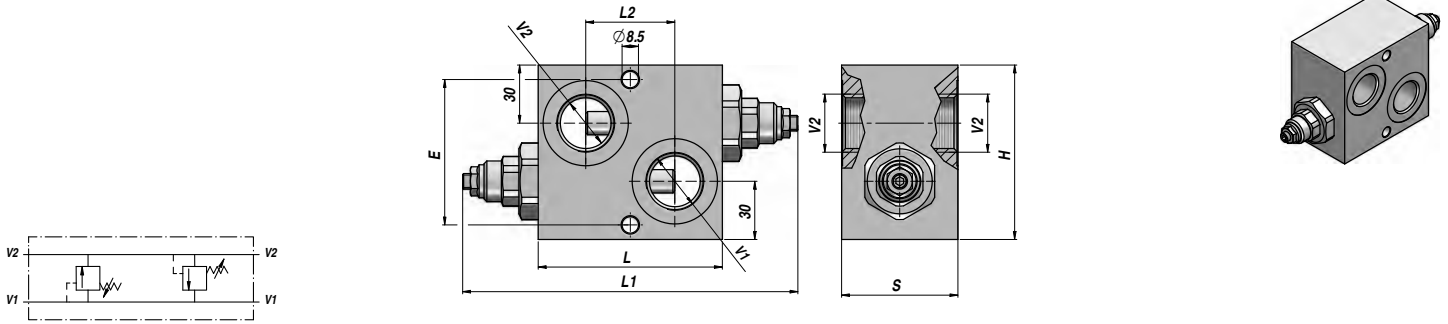
MOLLA - SPRING : A= 10:50 bar - B= 20:100 bar - C= 10:180 bar ( Standard ) - D= 50:250 bar - E= 80:300 bar

MATERIALE CORPO : ACCIAIO  
BODY MATERIAL : STEEL

MONTAGGIO IN LINEA  
LINE MOUNTING

VALVOLA ANTIURTO DOPPIA (DIFFERENZIALE)  
DUAL CROSS-OVER RELIEF VALVE (DIFFERENTIAL TYPE)

VAU/DE 1"



Codice Code	V1 BSP	V2 BSP	Q MAX l/min	P MAX bar	Tipo Type	L	L1	L2	E	H	S	kg
V0590.0470	1"	1"	160	350	VAU/DE 1" Q	95	199	46	75	90	60	3,20

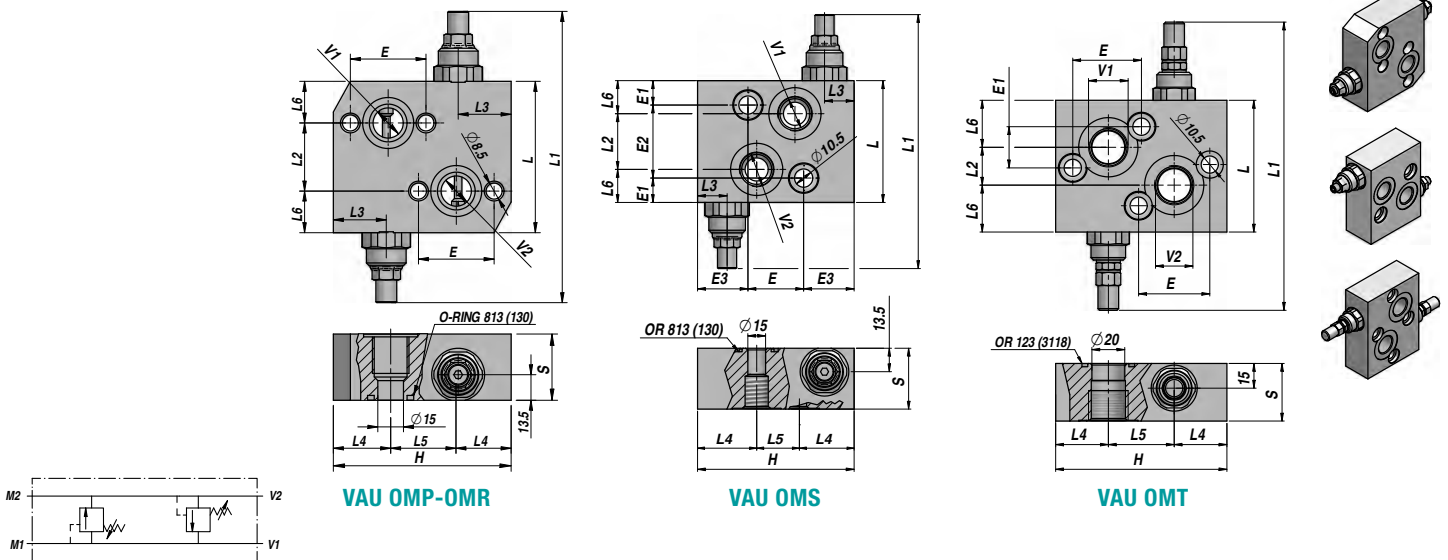
MOLLA - SPRING : N= 20:200 bar - Q= 50:400 bar ( Standard )

MATERIALE CORPO : ACCIAIO  
BODY MATERIAL : STEEL

MONTAGGIO IN LINEA  
LINE MOUNTING

VALVOLA ANTIURTO PER MOTORI  
CROSS LINE RELIEF VALVE FOR MOTORS

VAU/DE MP-R-S-T



Codice Code	V1 BSP	V2 BSP	Q MAX l/min	P MAX bar	Tipo Type	L	L1	L2	L3	L4	L5	L6	E	E1	E2	E3	H	S	kg
V0590.0500	1/2"	1/2"	60	300	VAU/DE 1/2"C (OMP/R)	80	164	36	28	29	36	22.0	40.0	-	-	-	94	35	1,75
V0590.0490	1/2"	1/2"	50	300	VAU/DE 1/2"C (OMS)	70	154	32	17	34	22	19.0	32.0	14	42	29	90	35	1,33
V0590.0505	3/4"	3/4"	100	300	VAU/DE 3/4"C (OMT)	80	188	23	-	32	40	28.5	43.2	25	-	-	104	35	1,92

MOLLA - SPRING : B= 20:100 bar - C= 10:180 bar ( Standard ) - D= 50:250 bar - E= 80:300 bar

A RICHIESTA - ON REQUEST : VAU/DE/SF ... CON SBLOCCO FRENO - WITH BRAKE RELEASE PORT

MATERIALE CORPO : ACCIAIO  
BODY MATERIAL : STEEL

FLANGIABILE  
FACE MOUNTING