

## POMPE AD INGRANAGGI E FLANGETTE GEAR PUMPS AND CONNECTORS

		Descrizione - Description	Type	Page	
		CARATTERISTICHE TECNICHE TECHNICAL SPECIFICATIONS		198÷199	
		POMPA AD INGRANAGGI GEAR PUMP	GR.1	PS1-A	200÷201
		POMPA AD INGRANAGGI GEAR PUMP	GR.2	PS2-A	202÷203
	<b>NEW!</b>	POMPA AD INGRANAGGI GEAR PUMP	GR.3	PG3-G	204÷205
		POMPA MULTIPLA AD INGRANAGGI E KIT DI ACCOPPIAMENTO MULTIPLE GEAR PUMP AND ASSEMBLING KIT		PS...TS PS...TC PGKIT	206÷207
		POMPA AD INGRANAGGI GEAR PUMP	GR.1	PC-1	208
		POMPA AD INGRANAGGI GEAR PUMP	GR.2	PC-2	208
		POMPA AD INGRANAGGI GEAR PUMP	GR.3	PC-3	209
		FLANGETTA 90° PER POMPA INGRANAGGI 90° ELBOW CONNECTOR FOR GEAR PUMP		AFRG	209
		FLANGETTA 90° PER POMPA INGRANAGGI 90° ELBOW CONNECTOR FOR GEAR PUMP	BOSCH TYPE	AFR-B	209

## CARATTERISTICHE TECNICHE TECHNICAL SPECIFICATIONS

### CARATTERISTICHE

Le pompe ad ingranaggi serie "PS/PG" prevedono i seguenti gruppi, cilindrate e pressioni massime:

GR.1: da 0,9 a 9,8 cm<sup>3</sup>/giro - P.max. 290 bar

GR.2: da 4 a 31 cm<sup>3</sup>/giro - P.max. 290 bar

GR.3: da 19 a 77 cm<sup>3</sup>/giro - P.max. 300 bar

Per le pompe GR.2 sono disponibili anche versioni con flange e coperchi in ghisa.

Questa soluzione permette di aumentare le pressioni massime fino a 320 bar riducendo il livello di rumorosità.

Il bilanciamento idrostatico corregge il gioco assiale degli ingranaggi.

Rendimento volumetrico medio: 95%

La lubrificazione delle boccole di supporto è automatica e proporzionale alla pressione di lavoro utilizzata.

Flange e alberi sono intercambiabili fra loro.

Su tutte le pompe è possibile montare coperchi completi di valvola limitatrice di pressione.

Sul GR.2 è previsto anche un coperchio con regolatore di flusso o entrambe le valvole.

Tutte le pompe sono predisposte per il traino posteriore di una o più pompe, interponendo il kit di accoppiamento.

### INFORMAZIONI TECNICHE

#### Fluidi idraulici consigliati

Oli idraulici a base minerale con proprietà antischiuma, antiossidante, anticorrosione ad elevato indice di viscosità.

Viscosità raccomandata: 15 ÷ 92 mm<sup>2</sup>/s.

Viscosità limite all'avvio: 2000 mm<sup>2</sup>/s.

Temperature d'esercizio: 20°C ÷ 65°C.

Temperature limite: -20°C ÷ 80°C (NBR) -15°C ÷ 100°C (VITON).

#### Aspirazione

La pressione di esercizio in aspirazione deve essere compresa tra 0,7 - 3 bar (assoluti).

Per valori superiori (max. 30 bar) è necessario ricorrere all'opzione "guarnizione K".

#### Filtrazione

Per favorire una maggior durata della pompa è necessario adottare un'efficace filtrazione verificandone periodicamente la funzionalità.

Filtrazioni raccomandate:

fino a 150 bar: 21/19/16 (ISO 4406) Classe 10 (NAS 1638)

oltre 150 bar: 20/18/15 (ISO 4406) Classe 9 (NAS 1638)

#### Senso di rotazione

Il senso di rotazione, indicato da una freccia sulla targhetta, viene definito S (sinistro) o D (destra) osservando l'albero frontalmente.

Un segno sul corpo indica il lato aspirazione.

Per invertire il senso di rotazione seguire le istruzioni in seguito riportate.

### FEATURES

The "PS/PG" gear pumps include the following groups, displacements and max. pressures:

GR.1: from 0,9 to 9,8 cm<sup>3</sup>/rev - Max.pressure 290 bar

GR.2: from 4 to 31 cm<sup>3</sup>/rev - Max. pressure 290 bar

GR.3: from 19 to 77 cm<sup>3</sup>/rev - Max. pressure 300 bar

The GR.2 gear pumps are also available with cast iron flanges and cover versions.

This solution allows to increase the max. pressures up to 320 bar, this reducing the loudness level.

The hydrostatic balance adjusts the axial backlash of the gears.

Average Volumetric efficiency: 95%

The lubrication of the supporting bushes is automatic and proportional to the used working pressure.

Flanges and shafts are interchangeable one to another.

On all pumps it is possible to mount covers complete with pressure relief valve.

On GR.2 a cover with flow regulation, or both valves, is also provided.

All pumps are arranged with back tow for one or more pumps, interposing the coupling kits.

### TECHNICAL INFORMATION

#### Recommended hydraulic fluids

Mineral based hydraulic oils with anti-foaming, antioxidative, corrosive inhibiting properties and high viscosity index.

Recommended viscosity: 15 ÷ 92 mm<sup>2</sup>/s.

Limit viscosity at startup: 2000 mm<sup>2</sup>/s.

Working temperature range: 20°C ÷ 65°C.

Temperature range: -20°C ÷ 80°C (NBR) -15°C ÷ 100°C (VITON)

#### Suction

The suction operating pressure must be between 0,7 - 3 bar (absolute values).

For higher values (max. 30 bar) it is necessary to resort to option "K seal".

#### Filtration

To facilitate a longer life of the pump it is necessary to adopt an efficient filtration, periodically verifying its functionality.

Recommended filtrations:

up to 150 bar: 21/19/16 (ISO 4406) Class 10 (NAS 1638)

above 150 bar: 20/18/15 (ISO 4406) Class 9 (NAS 1638)

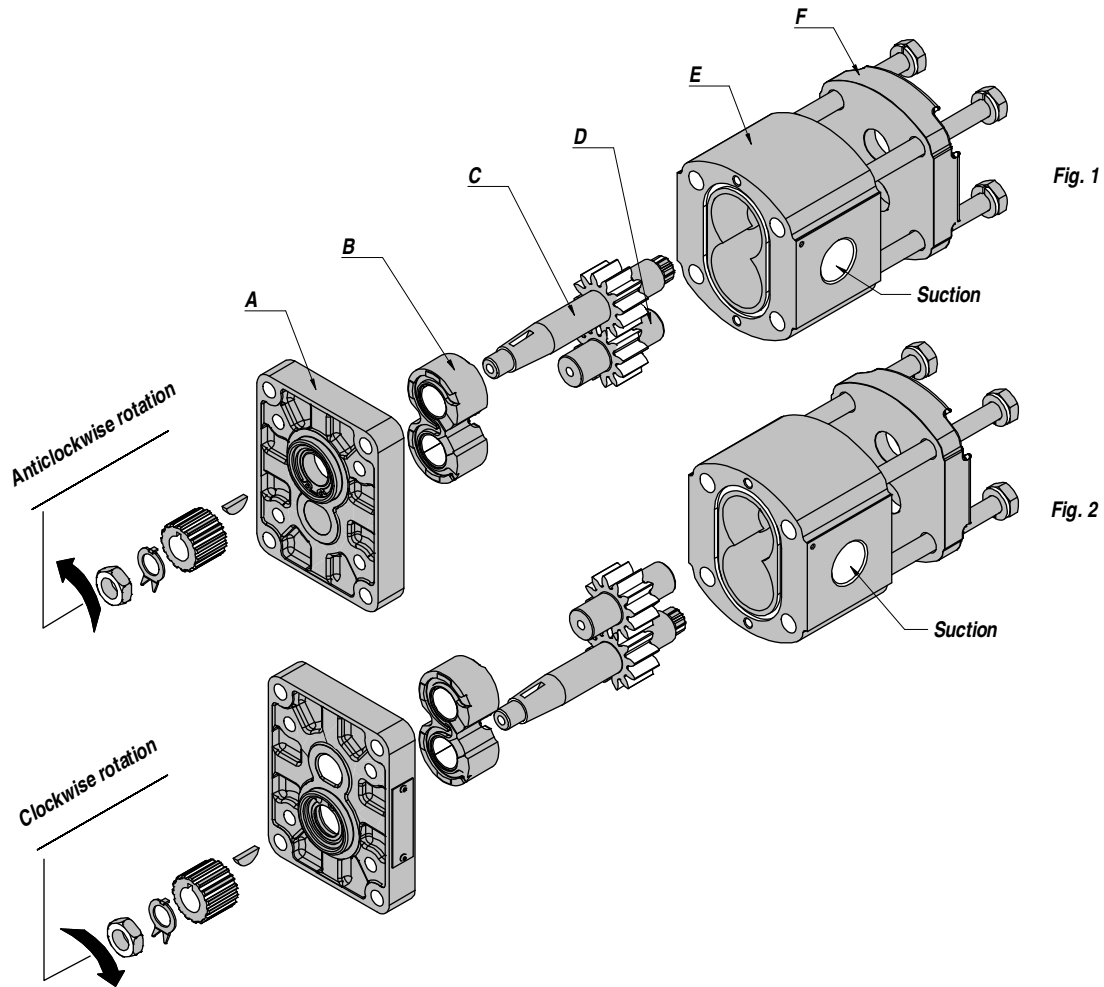
#### Wise rotation

The wise rotation, shown on the label by an arrow, is defined S (left) or D (right), when observing the shaft frontally.

A sign on the body of the pump shows the suction side.

To reverse the wise rotation please follow the instructions below.

CARATTERISTICHE TECNICHE  
TECHNICAL SPECIFICATIONS



**Inversione del senso di rotazione**

Il senso di rotazione delle pompe è evidenziato da una freccia sulla targhetta identificativa.

Sulle pompe serie "PS/PG" è possibile invertire il senso di rotazione nel seguente modo:

- smontare la pompa come da figura 1
- sfilare gli ingranaggi C e D
- rimontarli secondo figura 2
- rimontare la boccola B nella stessa posizione di figura 1
- capovolgere la flangia A
- rimontare la pompa serrando le viti con una chiave dinamometrica

Per le pompe GR.3 occorre smontare la sola flangia anteriore.

**Wise rotation reversal**

Pumps wise rotation is shown by an arrow on the label.

How to invert the wise rotation on "PS/PG" pumps

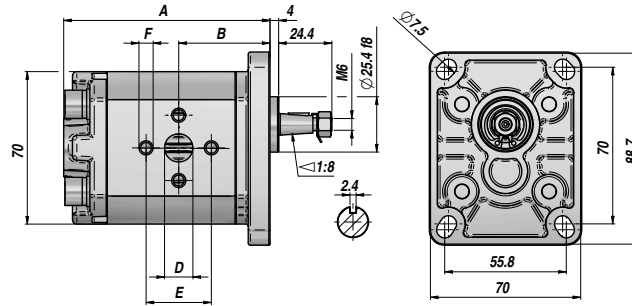
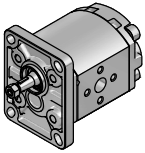
- disassemble the pump as shown in figure 1
- remove the gears C and D
- reassemble them according to figure 2
- reassemble the bushing B in the same position of figure 1
- reverse the flange A
- reassemble the pump tightening the screws using a dynamometric wrench.

For gear pumps GR.3, disassemble the front flange only.

Tipo pompa Pump type	GR1	GR2	GR3
Numero delle viti Number of screws	4	4	16
Tipo di filetto Type of thread	M8	M10	M10
Coppia di serraggio viti Tightening torque of screws	30 Nm	50 Nm	60 Nm
Tipo di giunto Type of coupling	BF31000400	BF31000700 BF31001900	BF31003500
Coppia di serraggio dado-giunto Tightening torque at nut-coupling	9 ÷ 10 Nm	22 ÷ 25 Nm 32 ÷ 35 Nm	50 ÷ 55 Nm

CORPO - BASE - COPERCHIO : ALLUMINIO  
BODY - FLANGE - COVER : ALUMINIUM

PS1-A



STANDARD EUROPEA BASE Ø25.4  
ALBERO CONICO 1:8

STANDARD EUROPEAN Ø25.4 FLANGE  
1:8 TAPER SHAFT

Codice Code	Tipo Type	cm3/giro cm3/rev	P MAX bar		giri/min rpm		A	B	Aspirazione Suction D x E x F	Mandata Delivery D x E x F	kg
			P1	P3	MAX	MIN					
PG009*001110000	PS1-A 0.9 S/D EUR-BN-10-0N	0.89	240	290	6000	600	73.60	34.80	ø10x26xM5	ø10x26xM5	0,91
PG012*001110000	PS1-A 1.2 S/D EUR-BN-10-0N	1.18	240	290	6000	600	74.70	35.35	ø10x26xM5	ø10x26xM5	0,93
PG016*001110000	PS1-A 1.6 S/D EUR-BN-10-0N	1.60	240	290	6000	400	76.40	36.20	ø10x26xM5	ø10x26xM5	0,95
PG020*001110000	PS1-A 2.0 S/D EUR-BN-10-0N	2.00	220	270	5500	400	77.90	36.95	ø10x26xM5	ø10x26xM5	0,97
PG025*001110000	PS1-A 2.5 S/D EUR-BN-10-0N	2.50	220	270	5000	400	79.90	37.95	ø13x30xM6	ø13x30xM6	1,00
PG032*001110000	PS1-A 3.2 S/D EUR-BN-10-0N	3.20	210	260	4500	400	82.60	39.30	ø13x30xM6	ø13x30xM6	1,04
PG037*001110000	PS1-A 3.7 S/D EUR-BN-10-0N	3.70	210	260	4000	400	84.60	40.30	ø13x30xM6	ø13x30xM6	1,07
PG042*001110000	PS1-A 4.2 S/D EUR-BN-10-0N	4.20	190	230	3500	400	86.50	41.25	ø13x30xM6	ø13x30xM6	1,10
PG050*001110000	PS1-A 5.0 S/D EUR-BN-10-0N	5.00	180	230	3000	400	89.60	42.80	ø13x30xM6	ø13x30xM6	1,14
PG063*001110000	PS1-A 6.3 S/D EUR-BN-10-0N	6.30	170	210	2700	400	94.70	45.35	ø13x30xM6	ø13x30xM6	1,22
PG078*001110000	PS1-A 7.8 S/D EUR-BN-10-0N	7.76	170	210	2500	400	100.40	48.20	ø13x30xM6	ø13x30xM6	1,30
PG098*001110000	PS1-A 9.8 S/D EUR-BN-10-0N	9.78	150	190	2000	400	108.30	52.15	ø13x30xM6	ø13x30xM6	1,41

\*1 = ROTAZIONE SINISTRA - ANTICLOCKWISE

P1 = PRESSIONE MAX. DI ESERCIZIO - MAX. WORKING PRESSURE

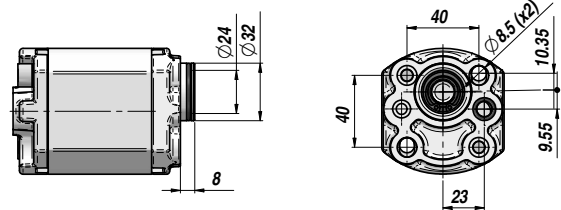
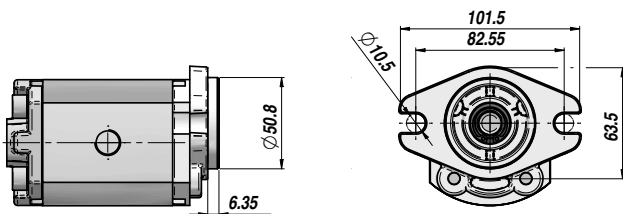
\*0 = ROTAZIONE DESTRA - CLOCKWISE

P3 = PRESSIONE MAX. DI PICCO - MAX. PEAK PRESSURE

FLANGE DISPONIBILI - AVAILABLE FLANGES

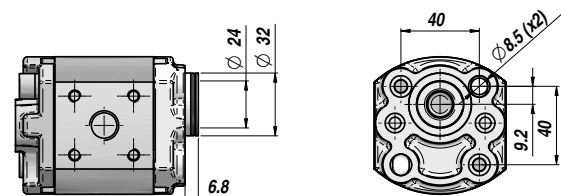
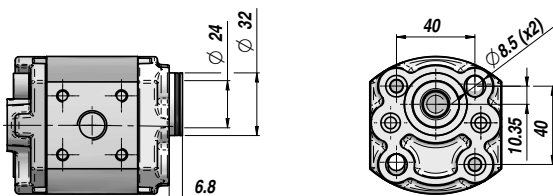
SAE-AA

MC 32



E 32 BX

E 32 CX



A RICHIESTA - ON REQUEST

VLP-(I-E) = COPERCHIO CON VALVOLA LIMITATRICE DI PRESSIONE - COVER WITH RELIEF VALVE

ALBERI DISPONIBILI - AVAILABLE SHAFTS

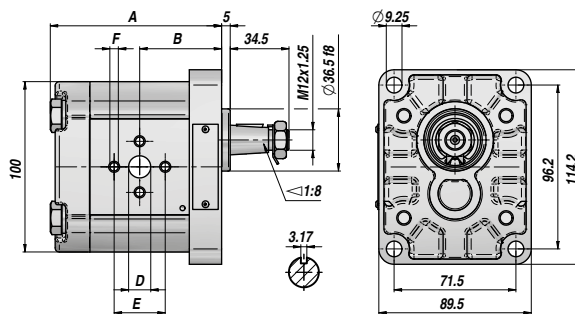
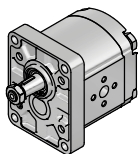
	EURO	SAE-AA	MC32	E32BX - E32BC	E32CX - E32CC
10					
11					
13					
14					
15					
27					

CONNESSIONI - CONNECTIONS

N (EURO)	G (GAS)	T (BOSCH)	U (UNF)	G4 (GAS)
<p>Suction Delivery</p>	<p>Suction Delivery</p>	<p>Suction Delivery</p>	<p>Suction Delivery</p>	<p>S= Suction D= Delivery</p>
<p>Dimensioni : vedi tabella a lato Dimensions : see table on the left</p>			<p>D = 9/16" - 18UNF (cm<sup>3</sup> 0.9 ÷ 2.0) D = 3/4" - 16UNF (cm<sup>3</sup> 2.5 ÷ 9.8)</p>	

CORPO - BASE - COPERCHIO : ALLUMINIO  
BODY - FLANGE - COVER : ALUMINIUM

PS2-A



STANDARD EUROPEA BASE Ø36.5  
ALBERO CONICO 1:8

STANDARD EUROPEAN Ø36.5 FLANGE  
1:8 TAPER SHAFT

Codice Code	Tipo Type	cm <sup>3</sup> /giro cm <sup>3</sup> /rev	P MAX bar		giri/min rpm		A	B	Aspirazione Suction D x E x F	Mandata Delivery D x E x F	kg
			P1	P3	MAX	MIN					
PG29004*0011000	PS2-A 04 S/D EUR-BN-10-ON	4.00	250	290	4000	500	93.00	44.40	ø13x30xM6	ø13x30xM6	2,30
PG29006*0011000	PS2-A 06 S/D EUR-BN-10-ON	6.00	250	290	4000	500	96.30	46.00	ø13x30xM6	ø13x30xM6	2,45
PG29008*0011000	PS2-A 08 S/D EUR-BN-10-ON	8.50	250	290	3500	500	100.50	48.10	ø13x30xM6	ø13x30xM6	2,60
PG29011*0011000	PS2-A 11 S/D EUR-BN-10-ON	11.00	250	290	3500	500	104.60	50.20	ø19x40xM8	ø13x30xM6	2,70
PG29014*0011000	PS2-A 14 S/D EUR-BN-10-ON	14.00	250	290	3500	500	109.60	52.70	ø19x40xM8	ø13x30xM6	2,80
PG29016*0011000	PS2-A 16 S/D EUR-BN-10-ON	16.50	230	250	3500	500	113.80	54.80	ø19x40xM8	ø13x30xM6	2,95
PG29019*0011000	PS2-A 19 S/D EUR-BN-10-ON	19.50	210	230	3300	500	118.80	57.30	ø19x40xM8	ø13x30xM6	3,10
PG29022*0011000	PS2-A 22 S/D EUR-BN-10-ON	22.50	190	210	2800	500	123.80	59.80	ø19x40xM8	ø13x30xM6	3,25
PG29026*0011000	PS2-A 26 S/D EUR-BN-10-ON	26.00	170	190	2500	500	129.60	62.70	ø19x40xM8	ø13x30xM6	3,40
PG29031*0011000	<b>NEW!</b> PS2-A 31 S/D EUR-BN-10-ON	31.50	130	150	2200	500	138.00	66,90	ø19x40xM8	ø13x30xM6	3,61

\*1 = ROTAZIONE SINISTRA - ANTICLOCKWISE

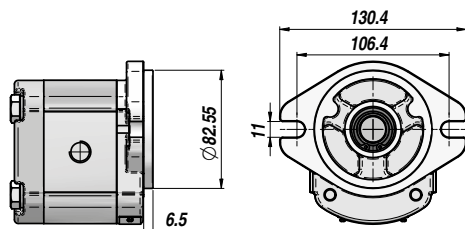
P1 = PRESSIONE MAX. DI ESERCIZIO - MAX. WORKING PRESSURE

\*0 = ROTAZIONE DESTRA - CLOCKWISE

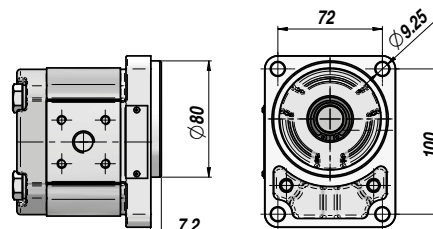
P3 = PRESSIONE MAX. DI PICCO - MAX. PEAK PRESSURE

FLANGE DISPONIBILI - AVAILABLE FLANGES

SAE-A



B80C



B50CX - B50CY

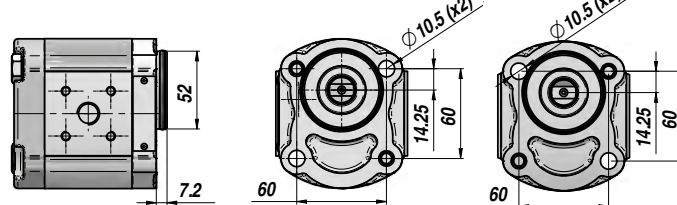
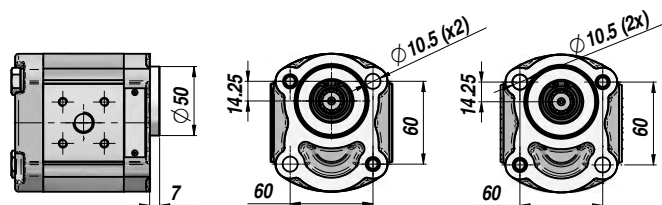
E52CX - E52CY

CX

CY

CX

CY



A RICHIESTA - ON REQUEST

PS2-G = BASE STANDARD EURO Ø36,5 E COPERCHIO IN GHISA - CAST IRON ST. EURO Ø36,5 FLANGE AND COVER

PS2-G SAE-A = BASE SAE-A Ø82,55 E COPERCHIO IN GHISA - CAST IRON SAE-A Ø82,55 FLANGE AND COVER

SU-ST = SUPPORTO CON CUSCINETTI - SUPPORT WITH BEARINGS

VLP-(I-E) = COPERCHIO CON VALVOLA LIMITATRICE DI PRESSIONE - COVER WITH RELIEF VALVE

VRF = COPERCHIO CON REGOLATORE DI FLUSSO - COVER WITH PRIORITY FLOW VALVE

VRF+VLP-I = COPERCHIO CON REGOLATORE DI FLUSSO E VALVOLA LIMITATRICE DI PRESSIONE - COVER WITH PRIORITY FLOW AND RELIEF VALVE

ALBERI DISPONIBILI - AVAILABLE SHAFTS

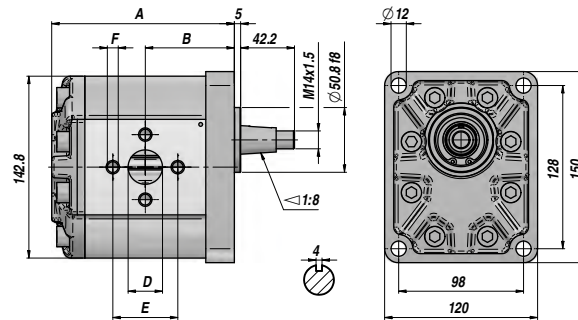
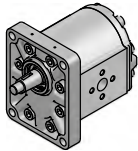
EURO	SAE-A	B80C	B50 (CX-CY)	E52 (CX-CY)
10	10	10	10	17
11	11	11	11	
12	12	12	12	
13	13	13	13	
14	14	14	14	
15	15	15	15	
16	16	16	16	

CONNESSIONI - CONNECTIONS

N (EURO)	G (GAS)	T (BOSCH)	U (UNF)	F (SAE)
<p>Suction Delivery</p>	<p>Suction Delivery</p>	<p>Suction Delivery</p>	<p>Suction Delivery</p>	<p>Suction Delivery</p>
<p>Dimensioni : vedi tabella a lato Dimensions : see table on the left</p>	<p>C = 1/2" (cm<sup>3</sup> 4 ÷ 8) C = 3/4" (cm<sup>3</sup> 11 ÷ 31)</p>		<p>C = 7/8" - 14UNF (cm<sup>3</sup> 4 ÷ 8) C = 1.1/16" - 12UN (cm<sup>3</sup> 11 ÷ 31)</p>	<p>C = 20 - D=38 - E=17.4 (cm<sup>3</sup> 4 ÷ 11) C = 26 - D=22.4 - E=47.6 (cm<sup>3</sup> 14 ÷ 31)</p>

PG3-G

NEW!



CORPO : ALLUMINIO  
BASE - COPERCHIO : GHISA  
BODY : ALUMINIUM  
FLANGE - COVER : CAST IRON

STANDARD EUROPEA BASE Ø50.8  
ALBERO CONICO 1:8

STANDARD EUROPEAN Ø50.8 FLANGE  
1:8 TAPER SHAFT

Codice Code	Tipo Type	cm3/giro cm3/rev	P MAX bar		giri/min rpm		A	B	Aspirazione Suction D x E x F	Mandata Delivery D x E x F	kg
			P1	P3	MAX	MIN					
PG3G119*0011000	PG3-G 19 S/D EUR-BN-10-0N	19.30	250	300	3500	700	128.30	62.40	ø27x51xM10	ø19x40xM8	7,67
PG3G123*0011000	PG3-G 23 S/D EUR-BN-10-0N	23.00	240	290	3500	700	131.30	63.90	ø27x51xM10	ø19x40xM8	7,81
PG3G130*0011000	PG3-G 30 S/D EUR-BN-10-0N	30.20	220	260	3300	700	137.30	66.90	ø27x51xM10	ø19x40xM8	8,09
PG3G134*0011000	PG3-G 34 S/D EUR-BN-10-0N	33.80	220	260	3300	700	140.30	68.40	ø27x51xM10	ø19x40xM8	8,22
PG3G137*0011000	PG3-G 37 S/D EUR-BN-10-0N	37.50	210	250	3300	700	143.30	69.90	ø27x51xM10	ø19x40xM8	8,36
PG3G144*0011000	PG3-G 44 S/D EUR-BN-10-0N	44.60	200	240	3000	700	149.30	72.90	ø27x51xM10	ø19x40xM8	8,64
PG3G153*0011000	PG3-G 53 S/D EUR-BN-10-0N	53.00	200	240	3000	700	156.30	76.40	ø27x51xM10	ø19x40xM8	8,96
PG3G162*0011000	PG3-G 62 S/D EUR-BN-10-0N	62.70	180	200	2500	700	164.30	80.40	ø27x51xM10	ø19x40xM8	9,33
PG3G170*0011000	PG3-G 70 S/D EUR-BN-10-0N	70.50	180	208	2500	700	170.80	86.90	ø27x51xM10	ø19x40xM8	9,63
PG3G177*0011000	PG3-G 77 S/D EUR-BN-10-0N	77.20	170	196	2200	700	176.30	92.40	ø27x51xM10	ø19x40xM8	9,88

\*1 = ROTAZIONE SINISTRA - ANTICLOCKWISE

P1 = PRESSIONE MAX. DI ESERCIZIO - MAX. WORKING PRESSURE

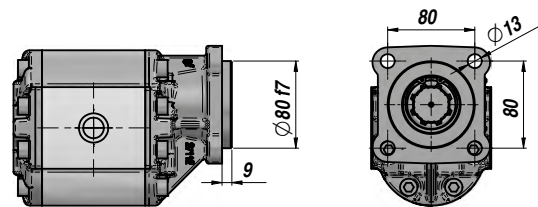
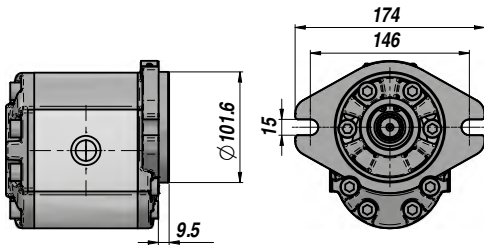
\*0 = ROTAZIONE DESTRA - CLOCKWISE

P3 = PRESSIONE MAX. DI PICCO - MAX. PEAK PRESSURE

FLANGE DISPONIBILI - AVAILABLE FLANGES

SAE-B

ZFC



A RICHIESTA - ON REQUEST

VLP-I = COPERCHIO CON VALVOLA LIMITATRICE DI PRESSIONE - COVER WITH RELIEF VALVE

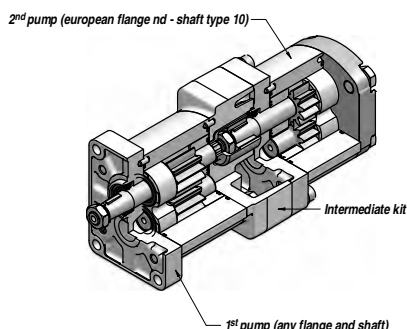




POMPA MULTIPLA AD INGRANAGGI - MULTIPLE GEAR PUMP

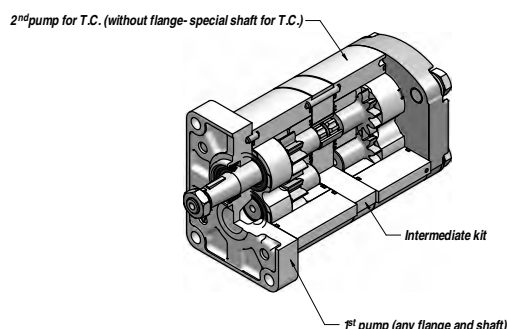
PS ... TS

TANDEM STANDARD  
STANDARD TANDEM



PS ... TC

TANDEM CORTO (T.C.)  
SHORT TANDEM (T.C.)



La somma delle coppie assorbite dalle singole pompe non deve superare la coppia massima ammessa sull'albero dell'unità trascinatrice.  
La coppia massima assorbita dalle pompe trascinate non deve superare la coppia ammessa dal traino della precedente.  
Vedi tabella.

The sum of the torques absorbed by each single pump must not exceed the max torque permitted on the primary gear pump.  
The max torque absorbed by the intermediate and final pumps must not exceed the torque permitted by the tow of the preceding pump.  
See table.

	Coppia ammessa sull'albero principale ( Nm ) Permissible shaft torque ( Nm )									Coppia trasmessa dal traino pompa. Torque transmitted by rear draft.
	Albero - Shaft									
	Type 10	Type 11	Type 12	Type 13	Type 14	Type 15	Type 16	Type 17	Type 27	
	Nm									
GR 1	30	30		35	40	30		25	25	30
GR 2	140	140	80	90	100	100	100	80		80
GR 3	240			200	270					230

Le pompe in tandem (o multiple) a due o più stadi sono disponibili in due esecuzioni: STANDARD e T.C. (Tandem Corto).

The two-staged or more tandem (or multiple) gear pumps are available as: STANDARD and T.C. (SHORT TANDEM).

**Tandem Standard**

L'aspirazione di ogni singola pompa del tandem è indipendente.

**Standard Tandem**

The suction of each single pump of the tandem is independent.

**Tandem Corto (T.C.)**

Dimensioni ridotte rispetto al tipo standard.

Le aspirazioni di ogni singola pompa sono comunicanti fra loro.

Il T.C. necessita di un serbatoio unico.

**Short Tandem (T.C.)**

Smaller dimensions than the standard type.

The suctions of each pump are connected with each other.

The T.C. (short tandem) requires a single tank.

Tutte le pompe serie "PS/PG" sono predisposte per il traino di una successiva. Con semplici operazioni di disassemblaggio e assemblaggio, utilizzando le pompe singole, è possibile realizzare l'unità tandem.

La limitata quantità di "kit di collegamento e accessori" permette di ridurre il valore del magazzino e favorisce un rapido servizio.

Le prestazioni delle pompe utilizzate per il tandem sono le stesse delle corrispondenti unità singole.

Sono possibili combinazioni con tutti i gruppi pompa (GR.1 - GR.2 - GR.3).

All "PS/PG" gear pumps are machined for the tow of the next pump.

Through simple assembling and disassembling operations, by using single pumps, it is possible to obtain the tandem unit.

The limited quantity of the "connection kits and accessories" allows to reduce the stock value and supports a quick service.

The performances of the single gear pumps composing the tandem are the same ones of the corresponding single units.

Different combinations are possible with all pumps groups (GR.1 - GR.2 - GR.3).

KIT DI ACCOPPIAMENTO PER POMPA MULTIPLA  
ASSEMBLING KIT FOR MULTIPLE GEAR PUMP

NEW!

PGKIT

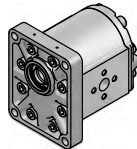
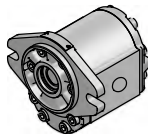
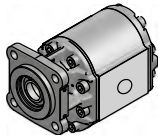
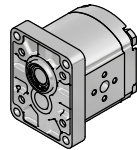
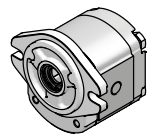
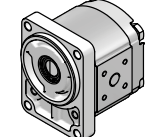
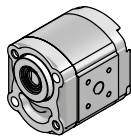
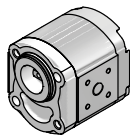
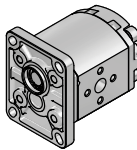
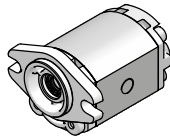
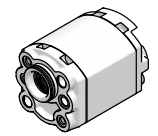
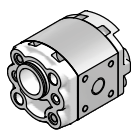
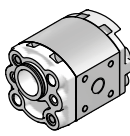
2<sup>a</sup> (..3<sup>a</sup> ..) pompa - 2<sup>nd</sup> (..3<sup>rd</sup> ..) pump

1 <sup>a</sup> pompa - 1 <sup>st</sup> pump	3	2	1
1			PGKIT0109110000 PGKIT0109110100 *
2		PGKIT0109220000 PGKIT0109220100 *	PGKIT0109211000 PGKIT0109210100
3	PGKIT010G330000 PGKIT0109331000	PGKIT010G320000 PGKIT0109321000	PGKIT010G310000 PGKIT010G310100

Tandem STANDARD  
STANDARD Tandem

Tandem CORTO  
SHORT Tandem

\* = Tiranti non compresi - Tie Rods not included  
(vedi tabella sotto - see table below)

EURO	SAE-B	ZFC		
				
EURO	SAE-A	B80-C	B50 (CX-CY)	E52 (CX-CY)
				
EURO	SAE-AA	MC32	E32BX	E32CX
				

TIRANTE UNIVERSALE E DADO PER ACCOPPIAMENTO POMPA TANDEM CORTO  
UNIVERSAL TIE ROD AND NUT FOR ASSEMBLING SHORT TANDEM PUMP

NEW!

PGKT

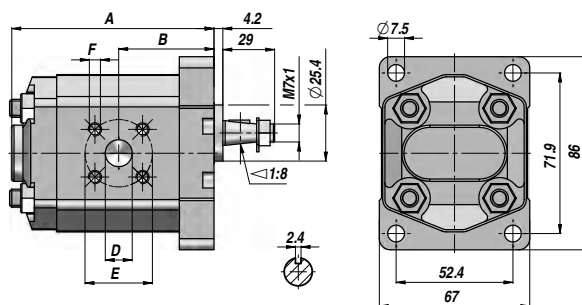
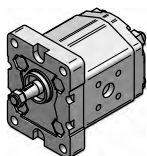
2<sup>a</sup> (..3<sup>a</sup> .. 4<sup>a</sup>) pompa - 2<sup>nd</sup> (..3<sup>rd</sup> .. 4<sup>th</sup>) pump

1 <sup>a</sup> pompa 1 <sup>st</sup> pump	+1	+1 +1	+1 +1 +1	+2	+2 +2	+2 +2 +2
1	PGKT01024309069 CDA0000800	PGKT01024329079 CDA0000800	PGKT01024312539 CDA0000800			
2				PGKT01024303749 CDA0001015	PGKT01024301829 CDA0001015	PGKT01024305389 CDA0001015

Per ogni accoppiamento occorre ordinare nr. 4 pezzi per ogni codice indicato sopra.  
4 pcs of each above code need to be ordered for each coupling.

**PC-1**

POMPA AD INGRANAGGI GEAR PUMP GR. 1



CORPO - BASE - COPERCHIO : ALLUMINIO  
BODY - FLANGE - COVER : ALUMINIUM

STANDARD EUROPEA BASE Ø25.4  
ALBERO CONICO 1:8  
STANDARD EUROPEAN Ø25.4 FLANGE  
1:8 TAPER SHAFT

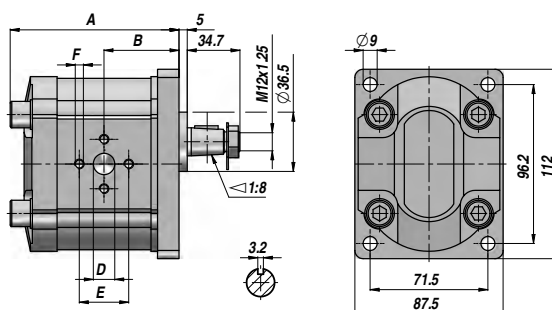
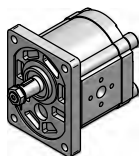
Codice Code	Tipo Type	cm3/giro cm3/rev	P MAX bar		giri/min rpm		A	B	Aspirazione Suction D x E x F	Mandata Delivery D x E x F	kg
			P1	P3	MAX	MIN					
PC*111ECC1A	PC*111	1.10	200	250	6000	700	75	33	Ø12x30xM6	Ø12x30xM6	0.87
PC*113ECC1A	PC*113	1.30	200	250	6000	700	76	34	Ø12x30xM6	Ø12x30xM6	0.89
PC*116ECC1A	PC*116	1.60	200	250	6000	700	78	35	Ø12x30xM6	Ø12x30xM6	0.90
PC*121ECC1A	PC*121	2.10	200	250	6000	700	79	36	Ø12x30xM6	Ø12x30xM6	0.92
PC*127ECC1A	PC*127	2.70	200	250	6000	700	81	37	Ø12x30xM6	Ø12x30xM6	0.95
PC*132ECC1A	PC*132	3.20	200	230	5000	700	83	38	Ø12x30xM6	Ø12x30xM6	0.97
PC*137ECC1A	PC*137	3.70	200	230	4500	700	85	39	Ø12x30xM6	Ø12x30xM6	1.00
PC*142ECC1A	PC*142	4.20	200	230	4000	700	87	40	Ø12x30xM6	Ø12x30xM6	1.02
PC*148ECC1A	PC*148	4.80	160	200	3500	700	89	41	Ø12x30xM6	Ø12x30xM6	1.05
PC*158ECC1A	PC*158	5.80	160	200	2900	700	93	43	Ø12x30xM6	Ø12x30xM6	1.10
PC*179ECC1A	PC*179	8.00	160	180	2100	700	101	47	Ø12x30xM6	Ø12x30xM6	1.20

\*S = ROTAZIONE SINISTRA - ANTICLOCKWISE  
\*D = ROTAZIONE DESTRA - CLOCKWISE

P1 = PRESSIONE MAX. DI ESERCIZIO - MAX. WORKING PRESSURE  
P3 = PRESSIONE MAX. DI PICCO - MAX. PEAK PRESSURE

**PC-2**

POMPA AD INGRANAGGI GEAR PUMP GR. 2



CORPO : ALLUMINIO  
BASE - COPERCHIO : GHISA  
BODY : ALUMINIUM  
FLANGE - COVER : CAST IRON

STANDARD EUROPEA BASE Ø36.5  
ALBERO CONICO 1:8  
STANDARD EUROPEAN Ø36.5 FLANGE  
1:8 TAPER SHAFT

Codice Code	Tipo Type	cm3/giro cm3/rev	P MAX bar		giri/min rpm		A	B	Aspirazione Suction D x E x F	Mandata Delivery D x E x F	kg
			P1	P3	MAX	MIN					
PC*206EAA1G	PC*206	6.00	200	250	3000	700	100	47	Ø13x30xM6	Ø13x30xM6	3.41
PC*208EAA1G	PC*208	8.00	200	250	3000	700	104	49	Ø13x30xM6	Ø13x30xM6	3.51
PC*210EAA1G	PC*210	10.00	200	250	3000	700	106	50	Ø20x40xM8	Ø13x30xM6	3.57
PC*212EAA1G	PC*212	12.00	200	230	3000	700	110	52	Ø20x40xM8	Ø13x30xM6	3.71
PC*214EAA1G	PC*214	14.00	200	230	3000	700	112	53	Ø20x40xM8	Ø13x30xM6	3.74
PC*216EAA1G	PC*216	16.00	200	230	3000	700	116	55	Ø20x40xM8	Ø13x30xM6	3.86
PC*220EAA1G	PC*220	20.00	190	230	3000	700	122	58	Ø20x40xM8	Ø13x30xM6	4.03
PC*225EAA1G	PC*225	25.00	160	200	2500	700	130	62	Ø20x40xM8	Ø13x30xM6	4.26
PC*230EAA1G	PC*230	30.00	140	180	2500	700	138	66	Ø22x40xM8	Ø20x40xM8	4.80

\*S = ROTAZIONE SINISTRA - ANTICLOCKWISE  
\*D = ROTAZIONE DESTRA - CLOCKWISE

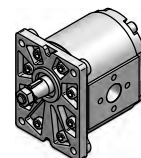
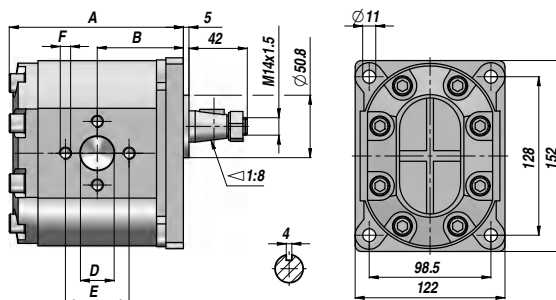
P1 = PRESSIONE MAX. DI ESERCIZIO - MAX. WORKING PRESSURE  
P3 = PRESSIONE MAX. DI PICCO - MAX. PEAK PRESSURE

A RICHIESTA - ON REQUEST: CORPO FILETTATO "BSP" - "BSP" THREADED HOUSING

GR. 3 POMPA AD INGRANAGGI  
GEAR PUMP

PC-3

CORPO : ALLUMINIO  
BASE - COPERCHIO : GHISA  
BODY : ALUMINIUM  
FLANGE - COVER : CAST IRON



STANDARD EUROPEA BASE Ø50.8  
ALBERO CONICO 1:8  
STANDARD EUROPEAN Ø50.8 FLANGE  
1:8 TAPER SHAFT

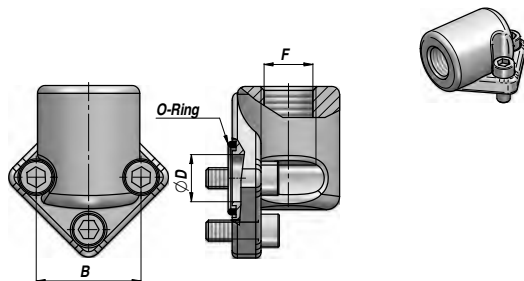
Codice Code	Tipo Type	cm3/giro cm3/rev	P MAX bar		giri/min rpm		A	B	Aspirazione Suction D x E x F	Mandata Delivery D x E x F	kg
			P1	P3	MAX	MIN					
PC*322EAA1G	PC*322	22.00	200	250	3000	600	129	64	Ø20x40xM8	Ø20x40xM8	8,10
PC*326EAA1G	PC*326	26.00	200	250	3000	600	132	66	Ø22x40xM8	Ø20x40xM8	8,30
PC*333EAA1G	PC*333	34.00	200	250	3000	500	137	68	Ø27x51xM10	Ø27x51xM10	8,60
PC*339EAA1G	PC*339	39.00	200	250	3000	500	141	70	Ø27x51xM10	Ø27x51xM10	8,80
PC*342EAA1G	PC*342	43.00	200	250	2800	500	144	71	Ø27x51xM10	Ø27x51xM10	9,00
PC*350EAA1G	PC*350	51.00	200	250	2800	500	150	74	Ø27x56xM10	Ø27x51xM10	9,20
PC*360EAA1G	PC*360	60.00	180	230	2800	400	156	77	Ø33x62xM10	Ø27x51xM10	9,60
PC*371EAA1G	PC*371	70.00	175	200	2500	400	163	81	Ø33x62xM10	Ø27x51xM10	9,90

\*S = ROTAZIONE SINISTRA - ANTICLOCKWISE  
\*D = ROTAZIONE DESTRA - CLOCKWISE

P1 = PRESSIONE MAX. DI ESERCIZIO - MAX. WORKING PRESSURE  
P3 = PRESSIONE MAX. DI PICCO - MAX. PEAK PRESSURE

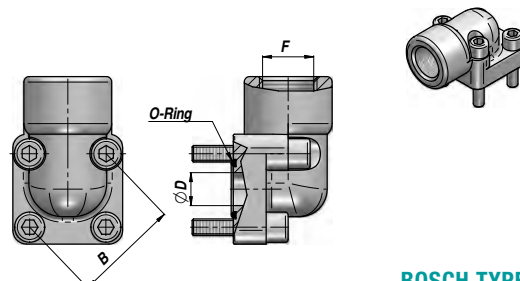
FLANGETTA 90° PER POMPA INGRANAGGI  
90° ELBOW CONNECTOR FOR GEAR PUMP

AFRG



FLANGETTA 90° PER POMPA INGRANAGGI  
90° ELBOW CONNECTOR FOR GEAR PUMP

AFR-B



BOSCH TYPE

Codice Code	F BSP	B	ØD	O-Ring	kg
AFRG026060	3/8"	26	11.5	015	0,14
AFRG026080	1/2"	26	11.5	015	0,13
AFRG030060	3/8"	30	12.0	809	0,15
AFRG030080	1/2"	30	12.0	809	0,14
AFRG040080	1/2"	40	19.0	814	0,32
AFRG040120	3/4"	40	19.0	814	0,28
AFRG040121	3/4"	40	23.5	022	0,28
AFRG051120	3/4"	51	24.0	217	0,60
AFRG051160	1"	51	24.0	217	0,51
AFRG056160	1"	56	24.0	217	0,52
AFRG062200	1"1/4	62	33.5	222	1,03
AFRG072240	1"1/2	72	40.0	830	1,07

Codice Code	F BSP	B	ØD	O-Ring	kg
AFRB030060 *	3/8"	30	12	809	0,10
AFRB030080 *	1/2"	30	12	809	0,09
AFRB035060 *	3/8"	35	12	116	0,11
AFRB035080 *	1/2"	35	12	116	0,11
AFRB040080 *	1/2"	40	19	814	0,18
AFRB040120 *	3/4"	40	19	814	0,17
AFRGB35060	3/8"	35	12	116	0,29
AFRGB35080	1/2"	35	12	116	0,27
AFRGB40080	1/2"	40	19	813	0,36
AFRGB40120	3/4"	40	19	813	0,35

MATERIALE : ACCIAIO  
MATERIAL : STEEL

MATERIALE : ACCIAIO - \* ALLUMINIO  
MATERIAL : STEEL - \* ALUMINIUM