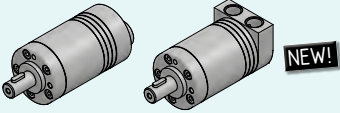
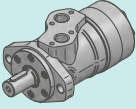
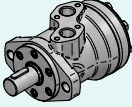
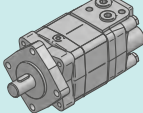
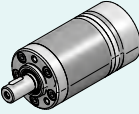
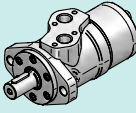
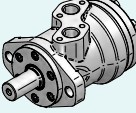
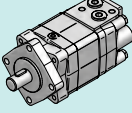
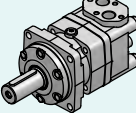
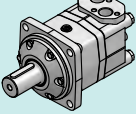


## MOTORI ORBITALI HYDRAULIC MOTORS

	Descrizione - Description	Type	Page
	MOTORE "Z-J HYDRAULIC" "Z-J HYDRAULIC" MOTOR	MCM MCMS	322
	MOTORE "Z-J HYDRAULIC" "Z-J HYDRAULIC" MOTOR	MCPN	323
	MOTORE "Z-J HYDRAULIC" "Z-J HYDRAULIC" MOTOR	MCRN	324
	MOTORE "Z-J HYDRAULIC" "Z-J HYDRAULIC" MOTOR	MCSY	325
	MOTORE "M+S HYDRAULIC" "M+S HYDRAULIC" MOTOR	MPM (MM)	326
	MOTORE "M+S HYDRAULIC" "M+S HYDRAULIC" MOTOR	MPP (MP)	327
	MOTORE "M+S HYDRAULIC" "M+S HYDRAULIC" MOTOR	MPR (MR)	328
	MOTORE "M+S HYDRAULIC" "M+S HYDRAULIC" MOTOR	MPS MPSY (MS-MSY)	329
	MOTORE "M+S HYDRAULIC" "M+S HYDRAULIC" MOTOR	MPT (MT)	330
	MOTORE "M+S HYDRAULIC" "M+S HYDRAULIC" MOTOR	MPV (MV)	331

**MCM-MCMS**



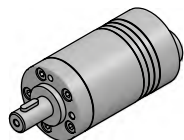
**NEW!**

MOTORE "Z-J HYDRAULIC"  
"Z-J HYDRAULIC" MOTOR

ALBERO CILINDRICO Ø16  
PARALLEL SHAFT Ø16

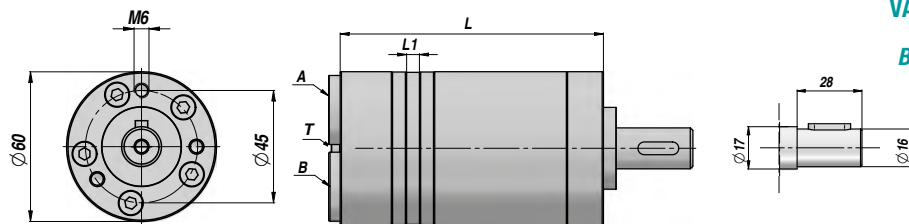
SENZA FLANGIA  
WITHOUT FLANGE

CONNESSIONI POSTERIORI - REAR PORTS

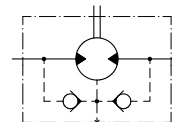


VERNICIATO NERO  
BLACK PAINTED

PREDISPOSTO PER IL DRENAGGIO  
MACHINED FOR DRAIN CONNECTION



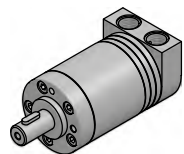
VALVOLE UNIDIREZIONALI  
INCORPORATE  
BUILT-IN CHECK VALVES



Codice Code	Tipo Type	cm <sup>3</sup> /giro cm <sup>3</sup> /rev	n. Max giri/min rpm	M Max daNm	Q MAX l/min	P MAX bar			A - B	T	L	L1	kg
						Caduta Drop Δp	Ingresso Inlet	Ritorno Return					
<b>LAVORO CONTINUO - CONTINUOUS WORK</b>													
MCM00008C0	MC-M 08 C	8.2	1950	1.1	16	100	140	140*	3/8"	1/8"	104.0	3.5	1,90
MCM00012C0	MC-M 12 C	12.9	1550	1.6	20	100	140	140*			106.0	5.5	2,00
MCM00020C0	MC-M 20 C	19.9	1000	2.5	20	100	140	140*			109.0	8.5	2,10
MCM00032C0	MC-M 32 C	31.6	630	4.0	20	100	140	140*			114.0	13.5	2,20
MCM00040C0	MC-M 40 C	39.8	500	4.5	20	90	140	140*			117.5	17.0	2,30
MCM00050C0	MC-M 50 C	50.3	400	4.6	20	70	140	140*			122.0	21.5	2,40

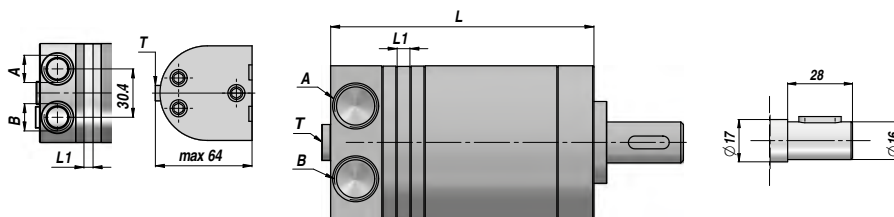
\* = CON DRENAGGIO - WITH DRAIN

CONNESSIONI LATERALI - SIDE PORTS

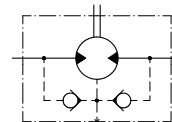


VERNICIATO NERO  
BLACK PAINTED

PREDISPOSTO PER IL DRENAGGIO  
MACHINED FOR DRAIN CONNECTION



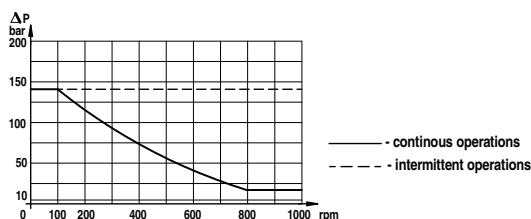
VALVOLE UNIDIREZIONALI  
INCORPORATE  
BUILT-IN CHECK VALVES



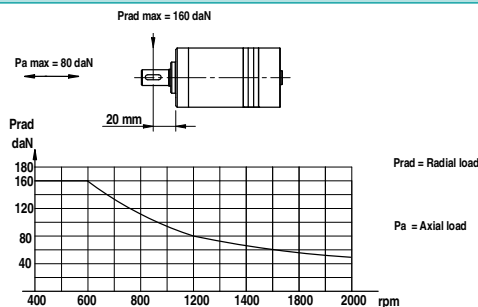
Codice Code	Tipo Type	cm <sup>3</sup> /giro cm <sup>3</sup> /rev	n. Max giri/min rpm	M Max daNm	Q MAX l/min	P MAX bar			A - B	T	L	L1	kg
						Caduta Drop Δp	Ingresso Inlet	Ritorno Return					
<b>LAVORO CONTINUO - CONTINUOUS WORK</b>													
MCM00S08C0	MC-MS 08 C	8.2	1950	1.1	16	100	140	140*	3/8"	1/8"	105.0	3.5	1,90
MCM00S12C0	MC-MS 12 C	12.9	1550	1.6	20	100	140	140*			107.0	5.5	2,00
MCM00S20C0	MC-MS 20 C	19.9	1000	2.5	20	100	140	140*			110.0	8.5	2,10
MCM00S32C0	MC-MS 32 C	31.6	630	4.0	20	100	140	140*			115.0	13.5	2,20
MCM00S40C0	MC-MS 40 C	39.8	500	4.5	20	90	140	140*			118.5	17.0	2,30
MCM00S50C0	MC-MS 50 C	50.3	400	4.6	20	70	140	140*			123.0	21.5	2,40

\* = CON DRENAGGIO - WITH DRAIN

PRESSIONE MAX. AL RITORNO SENZA DRENAGGIO  
MAX. RETURN PRESSURE WITHOUT DRAIN



CARICHI AMMESSI SULL'ALBERO  
PERMISSIBLE SHAFT LOADS



MOTORE "Z-J HYDRAULIC"  
"Z-J HYDRAULIC" MOTOR

ALBERO CILINDRICO Ø25  
PARALLEL SHAFT Ø25

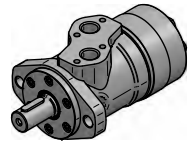
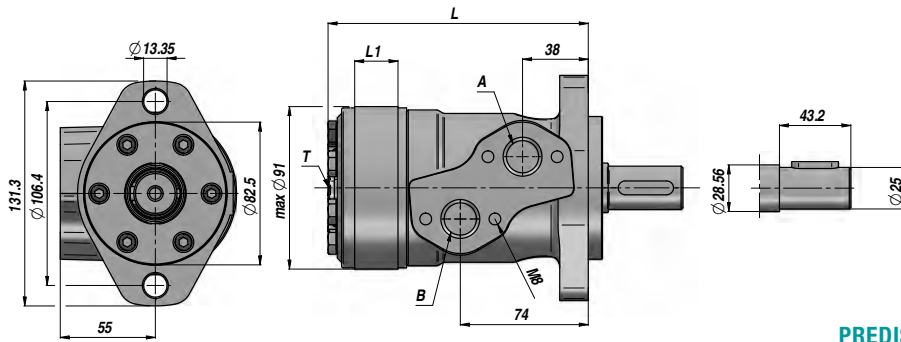
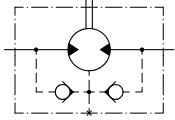
FLANGIA "SAE A" - 2 FORI  
"SAE A" FLANGE - 2 HOLES



MCPN

Standard: CON CUSCINETTI A RULLI PER CARICHI RADIALI - WITH NEEDLE BEARINGS FOR RADIAL LOADS

VALVOLE UNIDIREZIONALI  
INCORPORATE  
BUILT-IN CHECK VALVES



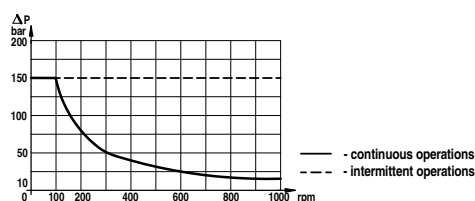
VERNICIATO NERO  
BLACK PAINTED

PREDISPOSTO PER IL DRENAGGIO  
MACHINED FOR DRAIN CONNECTION

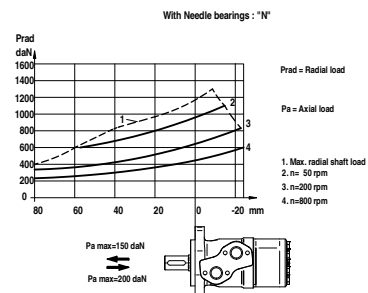
Codice Code	Tipo Type	cm <sup>3</sup> /giro cm <sup>3</sup> /rev	n. Max giri/min rpm	M Max daNm	Q MAX l/min	P MAX bar			A - B	T	L	L1	kg
						Caduta Drop Δp	Ingresso Inlet	Ritorno Return					
<b>LAVORO CONTINUO - CONTINUOUS WORK</b>													
MCPN036CDO	MC-PN 36 CD	36.0	1500	5.5	55	125	165	165 *			137.0	7.0	5,60
MCPN050CDO	MC-PN 50 CD	51.7	1150	10.0	60	140	165	165 *			137.0	7.0	5,60
MCPN080CDO	MC-PN 80 CD	77.7	770	14.6	60	140	165	165 *			140.5	10.5	5,70
MCPN100CDO	MC-PN 100 CD	96.2	615	18.2	60	140	165	165 *			143.0	13.0	5,90
MCPN125CDO	MC-PN 125 CD	120.2	490	23.6	60	140	165	165 *			146.0	16.0	6,00
MCPN160CDO	MC-PN 160 CD	157.2	383	30.2	60	140	165	165 *	1/2"	1/4"	151.0	21.0	6,20
MCPN200CDO	MC-PN 200 CD	194.5	310	36.0	60	140	165	165 *			157.0	26.0	6,40
MCPN250CDO	MC-PN 250 CD	240.3	250	38.0	60	110	165	165 *			162.0	32.0	6,60
MCPN315CDO	MC-PN 315 CD	314.5	192	37.5	60	90	165	165 *			172.0	42.0	6,90
MCPN400CDO	MC-PN 400 CD	389.5	155	36.0	60	70	165	165 *			182.0	52.0	7,40
MCPN500CDO	MC-PN 500 CD	486.5	120	38.5	60	60	165	165 *			195.0	65.0	8,00

\* = CON DRENAGGIO - WITH DRAIN

PRESSIONE MAX. AL RITORNO SENZA DRENAGGIO  
MAX. RETURN PRESSURE WITHOUT DRAIN



CARICHI AMMESSI SULL'ALBERO  
PERMISSIBLE SHAFT LOADS



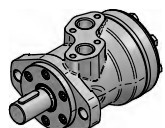


MOTORE "Z-J HYDRAULIC"  
"Z-J HYDRAULIC" MOTOR

ALBERO CILINDRICO Ø25  
PARALLEL SHAFT Ø25

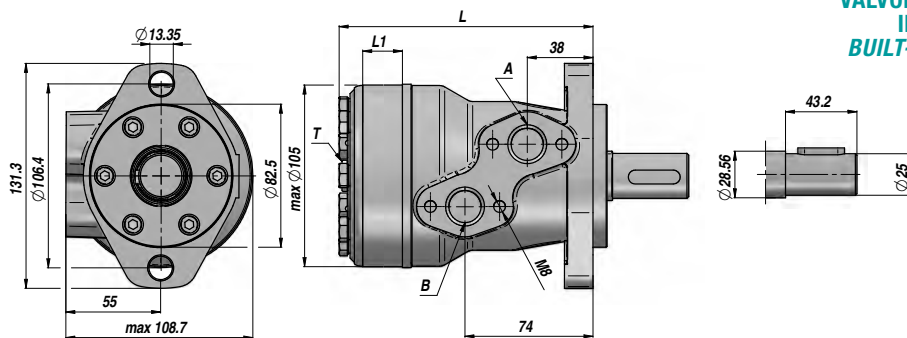
FLANGIA "SAE A" - 2 FORI  
"SAE A" FLANGE - 2 HOLES

Standard: CON CUSCINETTI A RULLI PER CARICHI RADIALI - WITH NEEDLE BEARINGS FOR RADIAL LOADS

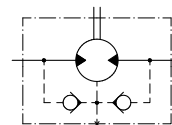


VERNICIATO NERO  
BLACK PAINTED

PREDISPOSTO PER IL DRENAGGIO  
MACHINED FOR DRAIN CONNECTION



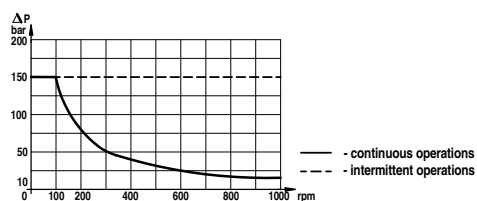
VALVOLE UNIDIREZIONALI  
INCORPORATE  
BUILT-IN CHECK VALVES



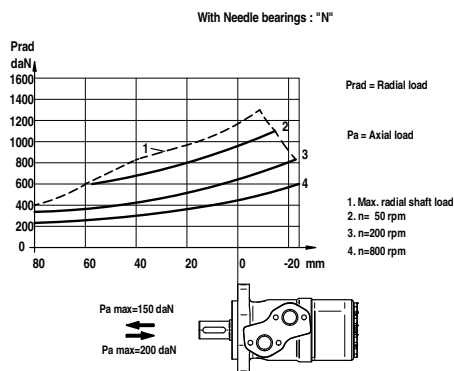
Codice Code	Tipo Type	cm <sup>3</sup> /giro cm <sup>3</sup> /rev	n. Max giri/min rpm	M Max daNm	Q MAX l/min	P MAX bar			A - B	T	L	L1	kg
						Caduta Drop Δp	Ingresso Inlet	Ritorno Return					
<b>LAVORO CONTINUO - CONTINUOUS WORK</b>													
MCRN036CDO	MC-RN 36 CD	36.0	1085	7.2	40	140	175	175 *	1/2"	1/4"	137.0	7.0	6.50
MCRN050CDO	MC-RN 50 CD	51.7	960	10.0	50	140	175	175 *			140.0	10.0	6.70
MCRN080CDO	MC-RN 80 CD	81.5	750	19.5	60	175	175	175 *			146.0	16.0	6.90
MCRN100CDO	MC-RN 100 CD	102.0	600	24.0	60	175	175	175 *			150.0	20.0	6.90
MCRN125CDO	MC-RN 125 CD	127.2	475	30.0	60	175	175	175 *			155.0	25.0	7.20
MCRN160CDO	MC-RN 160 CD	157.2	378	36.0	60	165	175	175 *			161.5	30.5	7.50
MCRN200CDO	MC-RN 200 CD	194.5	310	36.0	60	130	175	175 *			170.0	38.1	8.00
MCRN250CDO	MC-RN 250 CD	253.3	240	39.0	60	110	175	175 *			180.0	50.0	8.50
MCRN315CDO	MC-RN 315 CD	317.5	190	39.0	60	90	175	175 *			192.0	62.0	9.00
MCRN400CDO	MC-RN 400 CD	381.4	155	36.5	60	70	175	175 *			204.0	74.0	9.30

\* = CON DRENAGGIO - WITH DRAIN

PRESSIONE MAX. AL RITORNO SENZA DRENAGGIO  
MAX. RETURN PRESSURE WITHOUT DRAIN



CARICHI AMMESSI SULL'ALBERO  
PERMISSIBLE SHAFT LOADS



MOTORE "Z-J HYDRAULIC"  
"Z-J HYDRAULIC" MOTOR

ALBERO CILINDRICO Ø32  
PARALLEL SHAFT Ø32

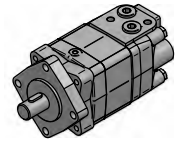
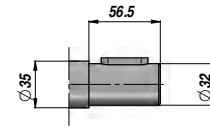
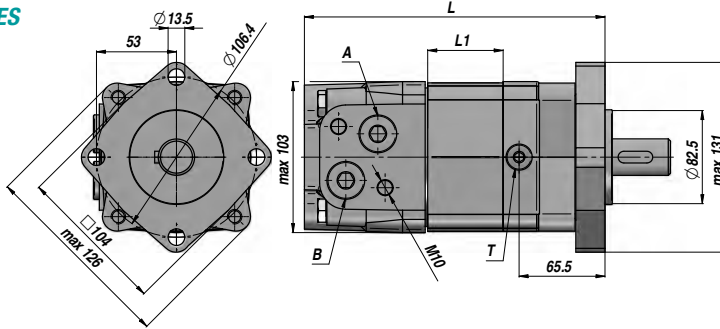
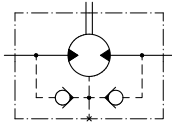
FLANGIA "SAE A" - 4 FORI  
"SAE A" FLANGE - 4 HOLES



MCSY

Standard: CON CUSCINETTI A RULLI PER CARICHI RADIALI - WITH NEEDLE BEARINGS FOR RADIAL LOADS

VALVOLE UNIDIREZIONALI  
INCORPORATE  
BUILT-IN CHECK VALVES



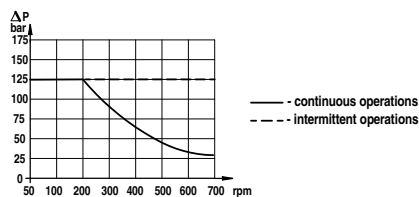
VERNICIATO NERO  
BLACK PAINTED

PREDISPOSTO PER IL DRENAGGIO  
MACHINED FOR DRAIN CONNECTION

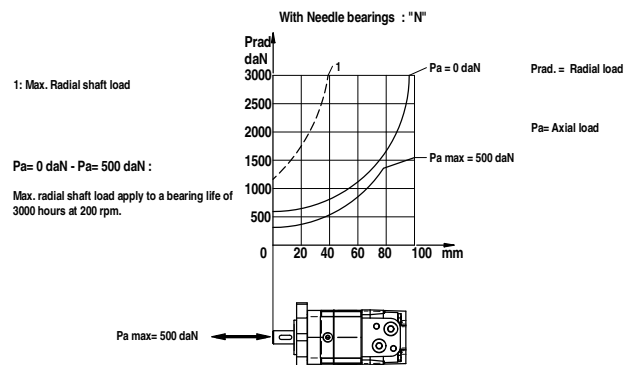
Codice Code	Tipo Type	cm <sup>3</sup> /giro cm <sup>3</sup> /rev	n. Max giri/min rpm	M Max daNm	Q MAX l/min	P MAX bar			A - B	T	L	L1	kg
						Caduta Drop Δp	Ingresso Inlet	Ritorno Return					
<b>LAVORO CONTINUO - CONTINUOUS WORK</b>													
MCSY080C00	MC-SY 80 C	80.6	800	22.5	65	205	225	125 *			170	16.0	9,80
MCSY100C00	MC-SY 100 C	100.8	748	29.0	75	205	225	125 *			174	20.0	10,00
MCSY125C00	MC-SY 125 C	125.0	600	36.5	75	205	225	125 *			179	25.0	10,30
MCSY160C00	MC-SY 160 C	154.0	470	48.5	75	210	225	125 *			181	27.0	10,70
MCSY200C00	MC-SY 200 C	194.0	375	58.6	75	210	225	125 *	1/2"	1/4"	188	34.0	11,10
MCSY250C00	MC-SY 250 C	243.0	300	70.8	75	200	225	125 *			196	42.0	11,60
MCSY315C00	MC-SY 315 C	311.0	240	88.0	75	200	225	125 *			208	54.0	12,30
MCSY400C00	MC-SY 400 C	394.0	185	88.0	75	160	225	125 *			223	69.0	13,20
MCSY475C00	MC-SY 475 C	475.0	155	91.0	75	140	225	125 *			237	83.0	14,30

\* = CON DRENAGGIO - WITH DRAIN

**PRESSIONE MAX. AL RITORNO SENZA DRENAGGIO**  
MAX. RETURN PRESSURE WITHOUT DRAIN



**CARICHI AMMESSI SULL'ALBERO**  
PERMISSIBLE SHAFT LOADS



**MPM (MM)**

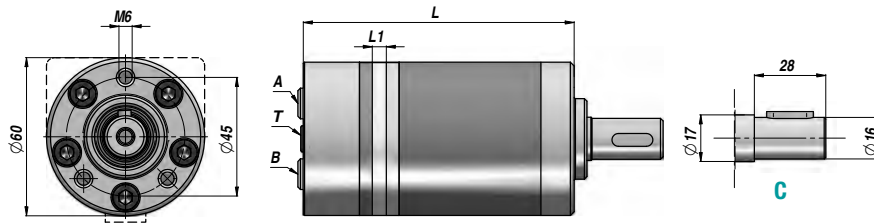
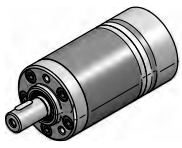


MOTORE "M+S HYDRAULIC"  
"M+S HYDRAULIC" MOTOR

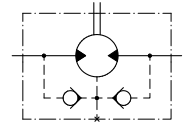
ALBERO CILINDRICO Ø16  
PARALLEL SHAFT Ø16

SENZA FLANGIA  
SENZA FLANGIA

Standard: CONNESSIONI POSTERIORI - REAR PORTS



VALVOLE UNIDIREZIONALI  
INCORPORATE  
BUILT-IN CHECK VALVES



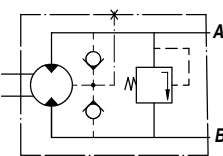
PREDISPOSTO PER IL DRENAGGIO  
MACHINED FOR DRAIN CONNECTION

Codice Code	Tipo Type	cm <sup>3</sup> /giro cm <sup>3</sup> /rev	n. Max giri/min rpm	M Max daNm	Q MAX l/min	P MAX bar			A - B	T	L	L1	kg
						Caduta Drop Δp	Ingresso Inlet	Ritorno Return					
<b>LAVORO CONTINUO - CONTINUOUS WORK</b>													
MPM008NC16	MPM 8 C	8.2	1950	1.1	16	105.0	140	140 *	3/8"	1/8"	104.0	3.5	1,90
MPM012NC16	MPM 12 C	12.9	1550	1.6	20	105.0	140	140 *			106.0	5.5	2,00
MPM020NC16	MPM 20 C	20.0	1000	2.5	20	105.0	140	140 *			109.0	8.5	2,10
MPM032NC16	MPM 32 C	31.8	630	4.0	20	105.0	140	140 *			114.0	13.5	2,20
MPM040NC16	MPM 40 C	40.0	500	4.1	20	82.5	140	140 *			117.5	17.0	2,30
MPM050NC16	MPM 50 C	50.0	400	4.5	20	70.0	140	140 *	121.5	21.0	2,50		

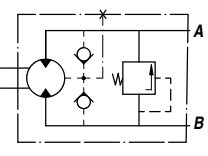
\* = CON DRENAGGIO - WITH DRAIN

OPTION

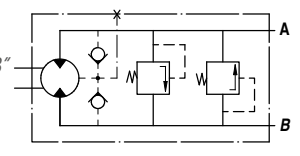
MPM-P.../ R  
VMP SULLA LINEA "A"  
RELIEF VALVE ON LINE "A"



MPM-P.../ L  
VMP SULLA LINEA "B"  
RELIEF VALVE ON LINE "B"

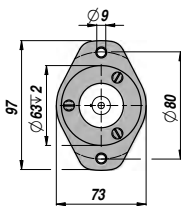


MPM-D...  
VMP SULLE LINEE "A/B"  
RELIEF VALVE ON LINES "A/B"



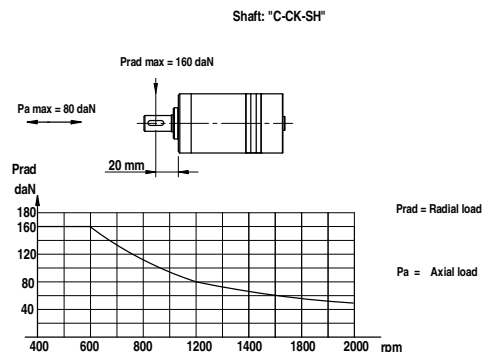
OPTION	OPTION	OPTION	PRESSIONE MAX. AL RITORNO SENZA DRENAGGIO MAX. RETURN PRESSURE WITHOUT DRAIN
<p>CK</p>	<p>F: (Oval Mount)</p>	<p>S: CONNESSIONI LATERALI SIDE PORTS</p>	

FLANGE KIT  
Code: MF48443014



CON N.3 VITI M6x14"  
WITH No.3 SCREWS M6x14"

CARICHI AMMESSI SULL'ALBERO  
PERMISSIBLE SHAFT LOADS



MOTORE "M+S HYDRAULIC"  
"M+S HYDRAULIC" MOTOR

ALBERO CILINDRICO Ø25  
PARALLEL SHAFT Ø25

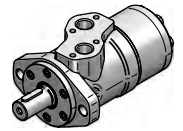
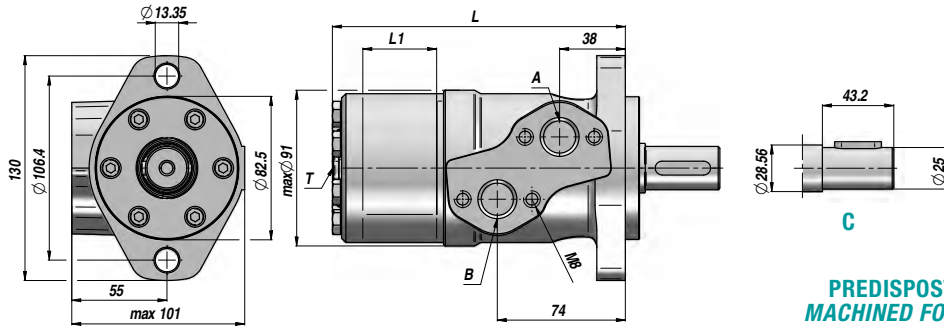
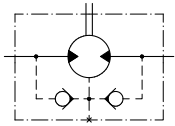
FLANGIA "SAE A" - 2 FORI  
"SAE A" FLANGE - 2 HOLES



MPP (MP)

Standard: CONNESSIONI LATERALI - SIDE PORTS

VALVOLE UNIDIREZIONALI  
INCORPORATE  
BUILT-IN CHECK VALVES



PREDISPOSTO PER IL DRENAGGIO  
MACHINED FOR DRAIN CONNECTION

Codice Code	Tipo Type	cm <sup>3</sup> /giro cm <sup>3</sup> /rev	n. Max giri/min rpm	M Max daNm	Q MAX l/min	P MAX bar			A - B	T	L	L1	kg
						Caduta Drop Δp	Ingresso Inlet	Ritorno Return					
<b>LAVORO CONTINUO - CONTINUOUS WORK</b>													
MSP025NC25**	MPP 25 CD	25.0	1600	3.3	40	100	175	175 *	1/2"	1/4"	134.0	5.20	5,60
MSP032NC25**	MPP 32 CD	32.0	1560	4.3	50	100	175	175 *			135.0	6.30	5,60
MSP040NC25**	MPP 40 CD	40.0	1500	6.2	60	120	175	175 *			136.5	7.40	5,70
MSP050NC25	MPP 50 C	49.5	1210	9.4	60	140	175	175 *			135.5	6.67	5,80
MSP080NC25	MPP 80 C	79.2	755	15.1	60	140	175	175 *			139.5	10.67	5,90
MSP100NC25	MPP 100 C	99.0	605	19.3	60	140	175	175 *			142.0	13.33	6,10
MSP125NC25	MPP 125 C	123.8	486	23.7	60	140	175	175 *			145.5	16.67	6,20
MSP160NC25	MPP 160 C	158.4	378	31.3	60	140	175	175 *			150.0	21.33	6,40
MSP200NC25	MPP 200 C	198.0	303	36.6	60	140	175	175 *			155.5	26.67	6,60
MSP250NC25	MPP 250 C	247.5	242	38.0	60	110	175	175 *			162.0	33.33	6,80
MSP315NC25	MPP 315 C	316.8	190	38.0	60	90	175	175 *			171.5	42.67	7,10
MSP400NC25	MPP 400 C	396.0	150	36.0	60	70	175	175 *			182.0	53.33	7,60
MSP500NC25	MPP 500 C	495.0	120	39.0	60	60	140	140 *			195.5	66.63	8,90
MSP630NC25	MPP 630 C	623.6	95	44.0	60	55	140	140 *			213.0	84.00	9,50

\* = CON DRENAGGIO - WITH DRAIN

\*\* Solo Versione "D" - "D" Version only (vedi grafico - see diagram)

OPTION	OPTION	OPTION	PRESSIONE MAX. AL RITORNO SENZA DRENAGGIO MAX. RETURN PRESSURE WITHOUT DRAIN
<b>CO</b> 	<b>Q: (Square Mount)</b> 	<b>E: CONNESSIONI POSTERIORI REAR PORTS</b> 	
<b>SH</b> 	<b>F: SAE A/4 (Oval Mount)</b> 	<b>CARICHI AMMESSI SULL'ALBERO PERMISSIBLE SHAFT LOADS</b> 	
<b>K</b> 	<b>CB</b> 		
<b>KB</b> 	<b>KB</b> 		

OPTION	OPTION	OPTION	PRESSIONE MAX. AL RITORNO SENZA DRENAGGIO MAX. RETURN PRESSURE WITHOUT DRAIN
<b>VERSIONI SPECIALI - SPECIAL VERSIONS</b> D: guarnizione albero - shaft seal: max 150 bar N/D: con cuscinetti a rulli - with needle bearings W: versione ruota - wheel mount	<b>OPTION</b> Shaft : " C-CO " Oval mount Square mount 	<b>OPTION</b> With Needle bearings : " N " 	<b>PRESSIONE MAX. AL RITORNO SENZA DRENAGGIO MAX. RETURN PRESSURE WITHOUT DRAIN</b> 

## MPR (MR)

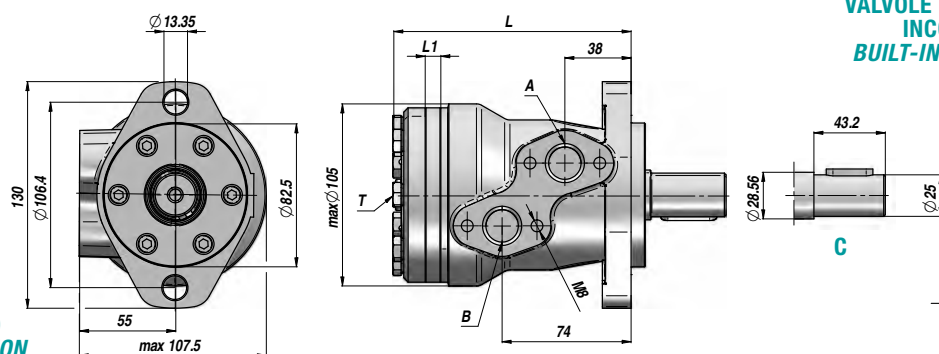
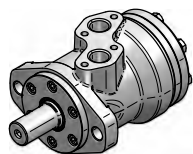


MOTORE "M+S HYDRAULIC"  
"M+S HYDRAULIC" MOTOR

ALBERO CILINDRICO Ø25  
PARALLEL SHAFT Ø25

FLANGIA "SAE A" - 2 FORI  
"SAE A" FLANGE - 2 HOLES

Standard: CONNESSIONI LATERALI - SIDE PORTS



VALVOLE UNIDIREZIONALI  
INCORPORATE  
BUILT-IN CHECK VALVES

PREDISPOSTO PER IL DRENAGGIO  
MACHINED FOR DRAIN CONNECTION

Codice Code	Tipo Type	cm <sup>3</sup> /giro cm <sup>3</sup> /rev	n. Max giri/min rpm	M Max daNm	Q MAX l/min	P MAX bar			A - B	T	L	L1	kg
						Caduta Drop $\Delta p$	Ingresso Inlet	Ritorno Return					
<b>LAVORO CONTINUO - CONTINUOUS WORK</b>													
MSR050NC25	MPR 50 C	51.5	775	10.0	40	140	175	175 *	1/2"	1/4"	138.0	9.0	6,80
MSR080NC25	MPR 80 C	80.3	750	20.0	60	175	175	175 *			143.0	14.0	6,90
MSR100NC25	MPR 100 C	99.8	600	24.0	60	175	175	175 *			146.0	17.4	7,20
MSR125NC25	MPR 125 C	125.7	475	30.0	60	175	175	175 *			150.5	21.8	7,30
MSR160NC25	MPR 160 C	159.6	375	39.0	60	175	175	175 *			156.5	27.8	7,50
MSR200NC25	MPR 200 C	199.8	300	38.5	60	140	175	175 *			163.5	34.8	8,00
MSR250NC25	MPR 250 C	250.1	240	39.0	60	110	175	175 *			172.0	43.5	8,40
MSR315NC25	MPR 315 C	315.7	190	36.0	60	85	175	175 *			183.0	54.8	9,10
MSR400NC25	MPR 400 C	397.0	150	38.0	60	65	175	175 *	198.0	69.4	9,80		

\* = CON DRENAGGIO - WITH DRAIN

**OPTION**

**CO**

**SH**

**K**

**CB**

**KB**

**OPTION**

**Q: (Square Mount)**

**F: SAE A/4 (Oval Mount)**

**OPTION**

**E: CONNESSIONI POSTERIORI  
REAR PORTS**

**PRESSIONE MAX. AL RITORNO SENZA DRENAGGIO  
MAX. RETURN PRESSURE WITHOUT DRAIN**

1: Low pressure shaft seal  
2: Standard seal for "...B" shaft  
3: High pressure shaft seal ("D" type)

— - - - - continuous operations  
- - - - - intermittent operations

**VERSIONI SPECIALI - SPECIAL VERSIONS**

D: guarnizione albero - shaft seal: max 150 bar  
N/D: con cuscinetti a rulli - with needle bearings  
W: versione ruota - wheel mount

**CARICHI AMMESSI SULL'ALBERO  
PERMISSIBLE SHAFT LOADS**

Shaft : "C-CO"

Pa max = 150 daN  
Pa max = 200 daN

Oval mount  
Square mount

With Needle bearings : "N"

Prad = Radial load  
Pa = Axial load

1. Max. radial shaft load  
2. n = 50 rpm  
3. n = 200 rpm  
4. n = 800 rpm



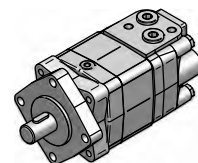
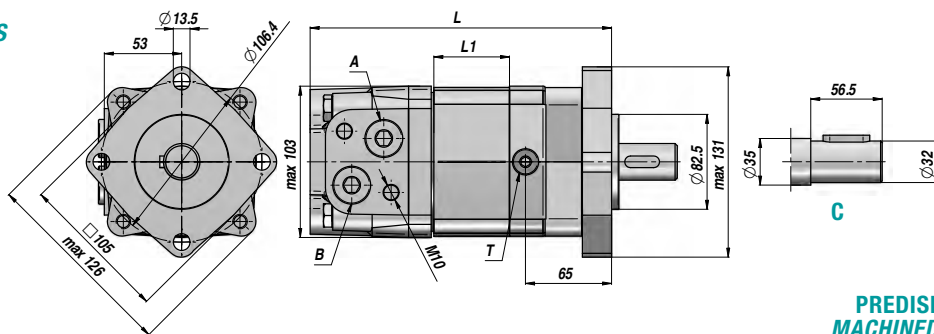
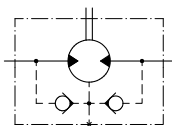
MOTORE "M+S HYDRAULIC" ALBERO CILINDRICO Ø32 FLANGIA "SAE A" - 4 FORI  
 "M+S HYDRAULIC" MOTOR PARALLEL SHAFT Ø32 "SAE A" FLANGE - 4 HOLES



MPS/Y (MS/Y)

Standard: CONNESSIONI LATERALI - SIDE PORTS

VALVOLE UNIDIREZIONALI  
 INCORPORATE  
 BUILT-IN CHECK VALVES



PREDISPOSTO PER IL DRENAGGIO  
 MACHINED FOR DRAIN CONNECTION

Codice Code	Tipo Type	cm³/giro cm³/rev	n. Max giri/min rpm	M Max daNm	Q MAX l/min	P MAX bar			A - B	T	L	L1	kg
						Caduta Drop Δp	Ingresso Inlet	Ritorno Return					
<b>LAVORO CONTINUO - CONTINUOUS WORK</b>													
MPS080NC32	MPS 80 C	80.5	810	24.0	65	210	230	140 *			168	14.0	9,90
MPS100NC32	MPS 100 C	100.0	750	30.5	75	210	230	140 *			171	17.4	10,10
MPS125NC32	MPS 125 C	125.7	600	37.5	75	210	230	140 *			176	21.8	10,40
MPS160NC32	MPS 160 C	159.7	470	49.0	75	210	230	140 *			182	27.8	10,80
MPS200NC32	MPSY 200 C	200.0	375	61.0	75	210	230	140 *			189	34.8	11,20
MPS250NC32	MPSY 250 C	250.0	300	72.0	75	200	230	140 *	1/2"	1/4"	197	43.5	11,70
MPS315NC32	MPSY 315 C	314.9	240	82.5	75	200	230	140 *			209	54.8	12,40
MPS400NC32	MPSY 400 C	397.0	190	86.5	75	160	230	140 *			223	69.4	13,10
MPS475NC32	MPSY 475 C	474.6	160	85.0	75	130	230	140 *			237	82.6	14,10
MPS525NC32	MPSY 525 C	522.7	145	85.0	75	115	230	140 *			229	74.5	14,60
MPS565NC32	MPSY 565 C	564.9	130	85.0	75	105	230	140 *			235	80.2	15,00

\* = CON DRENAGGIO - WITH DRAIN

**OPTION**

**CO** 47.5, Ø31.75, Ø35

**K** 36, 58, Ø35, M2x1.5, 1:10

**SH** 56.5, 36, Ø31.75, 1AT DP12/24 ANSIB921-1970

**SL** 100, 76, Ø34.85, DIN9611

**OPTION**

**Q: (Square Mount)** Ø11.5, 53, Ø82.5, Ø106.4, max □103

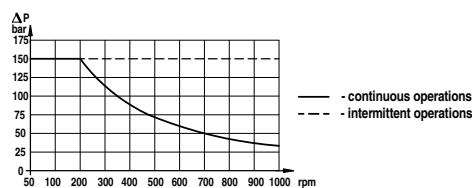
**OPTION**

**E: CONNESSIONI POSTERIORI REAR PORTS** A, 53, 32, B

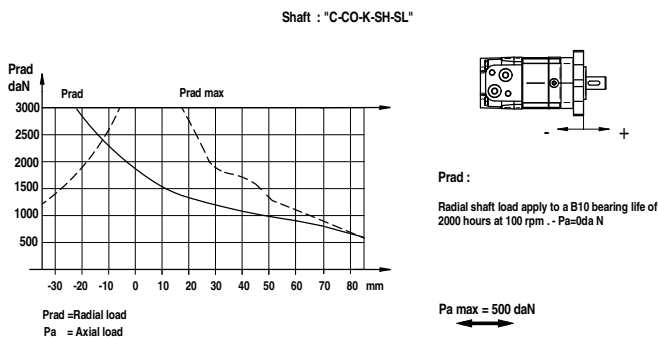
**OPTION**

**F: SAE A/4 (Oval Mount)** Ø13.5, max Ø136, Ø82.5, Ø106.4, 45°, 55, max 101

**PRESSIONE MAX. AL RITORNO SENZA DRENAGGIO  
 MAX. RETURN PRESSURE WITHOUT DRAIN**



**CARICHI AMMESSI SULL'ALBERO  
 PERMISSIBLE SHAFT LOADS**



**VERSIONI SPECIALI - SPECIAL VERSIONS**

- W: versione ruota - wheel mount
- B: con freno tamburo - with drum brake
- S/V: versioni corte - short versions

## MPT (MT)

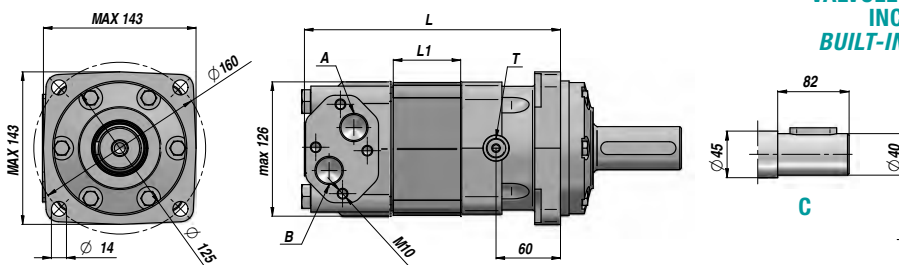
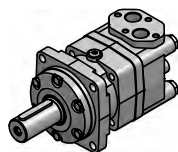


MOTORE "M+S HYDRAULIC"  
"M+S HYDRAULIC" MOTOR

ALBERO CILINDRICO Ø40  
PARALLEL SHAFT Ø40

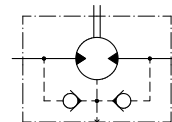
FLANGIA QUADRA - 4 FORI  
SQUARE FLANGE - 4 HOLES

Standard: CONNESSIONI LATERALI - SIDE PORTS



VALVOLE UNIDIREZIONALI  
INCORPORATE  
BUILT-IN CHECK VALVES

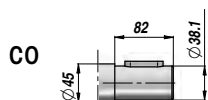
PREDISPOSTO PER IL DRENAGGIO  
MACHINED FOR DRAIN CONNECTION



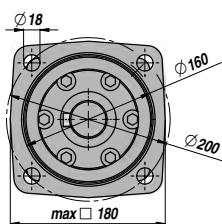
Codice Code	Tipo Type	cm <sup>3</sup> /giro cm <sup>3</sup> /rev	n. Max giri/min rpm	M Max daNm	Q MAX l/min	P MAX bar			A - B	T	L	L1	kg
						Caduta Drop Δp	Ingresso Inlet	Ritorno Return					
<b>LAVORO CONTINUO - CONTINUOUS WORK</b>													
MPT160NC40	MPT 160 C	161.1	622	47	100	200	210	140 *	3/4"	1/4"	190	16.5	20,00
MPT200NC40	MPT 200 C	201.4	620	59	125	200	210	140 *			195	21.5	20,50
MPT250NC40	MPT 250 C	251.8	496	73	125	200	210	140 *			201	27.8	21,00
MPT315NC40	MPT 315 C	326.3	382	95	125	200	210	140 *			211	37.0	22,00
MPT400NC40	MPT 400 C	410.9	304	108	125	180	210	140 *			221	47.5	23,00
MPT500NC40	MPT 500 C	523.6	238	122	125	160	210	140 *			235	61.5	24,00
MPT630NC40	MPT 630 C	631.2	197	130	125	140	210	140 *			231	57.5	24,00
MPT725NC40	MPT 725 C	724.3	172	127	125	120	210	140 *	240	66.5	24,50		

\* = CON DRENAGGIO - WITH DRAIN

### OPTION

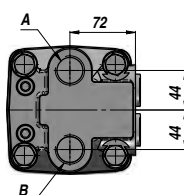


W: (Wheel Mount)

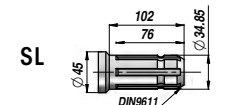
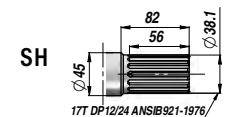
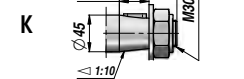
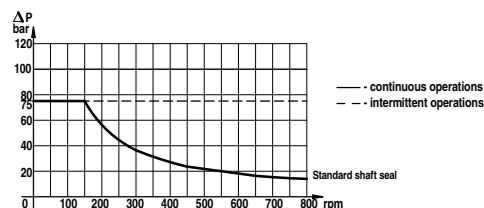


### OPTION

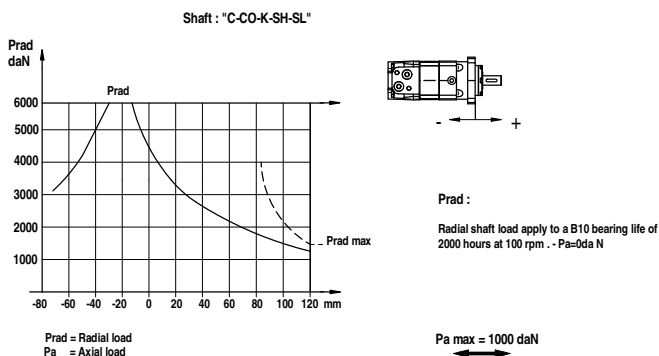
E: CONNESSIONI POSTERIORI  
REAR PORTS



### PRESSIONE MAX. AL RITORNO SENZA DRENAGGIO MAX. RETURN PRESSURE WITHOUT DRAIN



### CARICHI AMMESSI SULL'ALBERO PERMISSIBLE SHAFT LOADS



### VERSIONI SPECIALI - SPECIAL VERSIONS

- W: versione ruota - wheel mount
- S/V: versioni corte - short versions
- M: versione rinforzata - reinforced version

MOTORE "M+S HYDRAULIC"  
"M+S HYDRAULIC" MOTOR

ALBERO CILINDRICO Ø50  
PARALLEL SHAFT Ø50

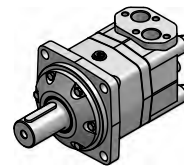
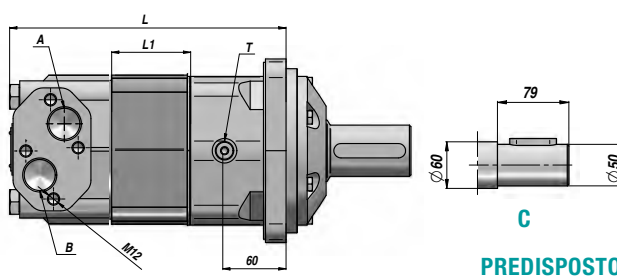
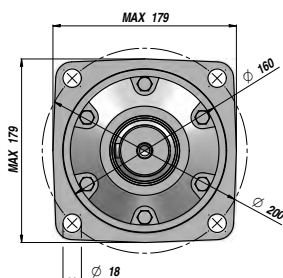
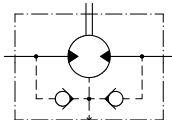
FLANGIA QUADRA - 4 FORI  
SQUARE FLANGE - 4 HOLES



MPV (MV)

Standard: CONNESSIONI LATERALI - SIDE PORTS

VALVOLE UNIDIREZIONALI  
INCORPORATE  
BUILT-IN CHECK VALVES



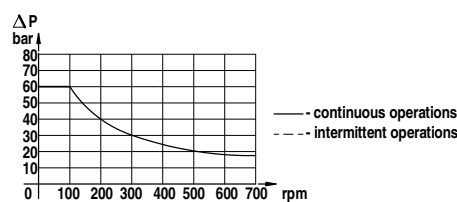
PREDISPOSTO PER IL DRENAGGIO  
MACHINED FOR DRAIN CONNECTION

Codice Code	Tipo Type	cm <sup>3</sup> /giro cm <sup>3</sup> /rev	n. Max giri/min rpm	M Max daNm	Q MAX l/min	P MAX bar			A - B	T	L	L1	kg
						Caduta Drop Δp	Ingresso Inlet	Ritorno Return					
<b>LAVORO CONTINUO - CONTINUOUS WORK</b>													
MPV315C000	MPV 315 C	314.5	510	92	160	200	210	140 *			214.5	22.0	31,80
MPV400C000	MPV 400 C	400.9	500	118	200	200	210	140 *			221.5	29.0	32,60
MPV500C000	MPV 500 C	499.6	400	146	200	200	210	140 *	1"	1/4"	229.5	37.0	33,50
MPV630C000	MPV 630 C	629.1	320	166	200	180	210	140 *			240.0	47.5	34,90
MPV800C000	MPV 800 C	801.8	250	188	200	160	210	140 *			254.0	61.5	36,50

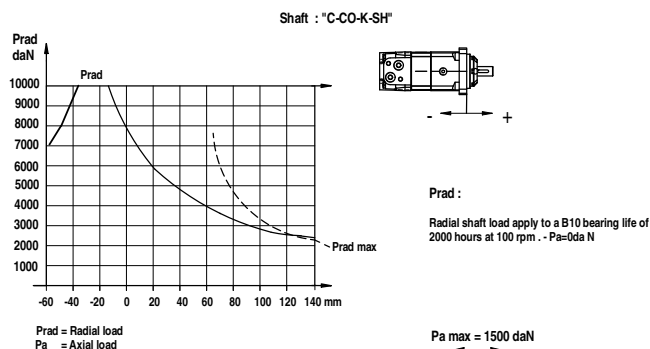
\* = CON DRENAGGIO - WITH DRAIN

OPTION	OPTION
<p><b>CO</b></p>	<p><b>W: (Wheel Mount)</b></p>
<p><b>K</b></p>	
<p><b>SH</b></p>	<p><b>C: SAE C Mount</b></p>

**PRESSIONE MAX. AL RITORNO SENZA DRENAGGIO**  
MAX. RETURN PRESSURE WITHOUT DRAIN



**CARICHI AMMESSI SULL'ALBERO**  
PERMISSIBLE SHAFT LOADS



**VERSIONI SPECIALI - SPECIAL VERSIONS**

W: versione ruota - wheel mount  
S/V: versioni corte - short versions