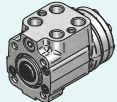
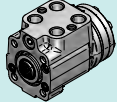
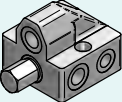
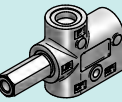
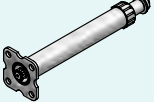



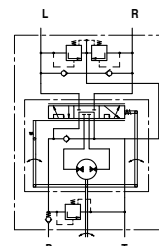
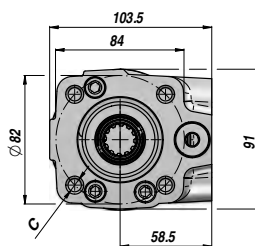
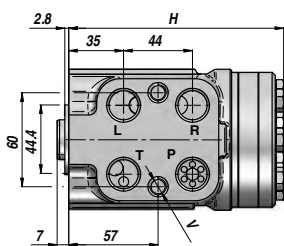


## IDROGUIDE E ACCESSORI STEERING UNITS AND ACCESSORIES

	Descrizione - Description	Type	Page
	IDROGUIDA "M+S HYDRAULIC" "M+S HYDRAULICS" STEERING UNIT	HKUS.../4	310
	IDROGUIDA "M+S HYDRAULIC" "M+S HYDRAULICS" STEERING UNIT	HKUS.../5	310
	VALVOLA PRIORITARIA PER IDROGUIDA LOAD-SENSING PRIORITY VALVE FOR LOAD-SENSING STEERING UNIT	VPRD	311
	VALVOLA PRIORITARIA PER IDROGUIDA LOAD-SENSING PRIORITY VALVE FOR LOAD-SENSING STEERING UNIT	VPRTA	311
	COLONNETTA PER IDROGUIDA STEERING COLUMN	ACI	311
	VOLANTE STEERING WHEEL	AV	312
	TAPPO PER VOLANTE CAP FOR STEERING-WHEEL	AT	312
	POMELLO RIGIDO PER VOLANTE HARD KNOB FOR STEERING-WHEEL	AP	312

**HKUS.../4** IDROGUIDA "M+S HYDRAULIC" "M+S HYDRAULIC" STEERING UNIT **CENTRO APERTO** **OPEN CENTER** **NON REATTIVA** **NON LOAD REACTION** **CON VALVOLE** **WITH VALVES**

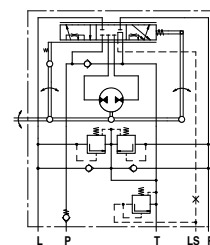
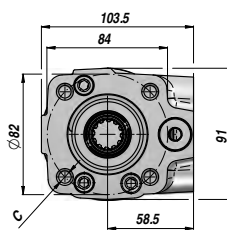
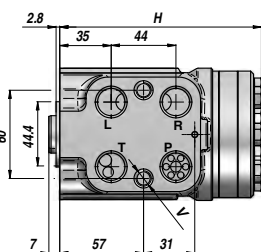


Codice Code	Tipo Type	cm <sup>3</sup> /giro cm <sup>3</sup> /rev	VMP RF bar	VAS SV bar	P MAX bar	P-T R-L BSP	V (x 2)	C (x 4)	H	kg
DHKUS04410	HKUS 40/4/100	39.6			140				130.8	5.30
DHKUS05410	HKUS 50/4/100	49.5			140				132.2	5.40
DHKUS06410	HKUS 63/4/100	65.6			170				133.9	5.50
DHKUS08410	HKUS 80/4/100	79.2			170				136.2	5.60
DHKUS10410	HKUS 100/4/100	99.0			170				138.8	5.70
DHKUS12410	HKUS 125/4/100	123.8	100	160	170	1/2"	M10x1	M10	142.2	5.80
DHKUS16410	HKUS 160/4/100	158.4			170				146.8	6.00
DHKUS20410	HKUS 200/4/100	198.0			170				152.2	6.30
DHKUS25410	HKUS 250/4/100	247.5			170				158.8	6.50
DHKUS32410	HKUS 320/4/100	316.8			170				168.2	7.00
DHKUS40410	HKUS 400/4/100	396.0			170				178.8	7.40
DHKUS50410	HKUS 500/4/100	495.0			170				192.0	8.00

VALVOLE INCORPORATE : VALVOLA NON RITORNO + VALVOLA LIMITATRICE DI PRESSIONE (VMP) + VALVOLA ANTICAVITAZIONE + VALVOLA ANTI-SHOCK (VAS)  
 BUILT-IN VALVES : CHECK VALVE + RELIEF VALVE (RF) + ANTICAVITATION VALVES + SHOCK VALVES (SV)

**HKUS.../5** IDROGUIDA "M+S HYDRAULIC" "M+S HYDRAULIC" STEERING UNIT **CENTRO CHIUSO** **CLOSED CENTER** **NON REATTIVA** **NON LOAD REACTION** **CON VALVOLE** **WITH VALVES**

LOAD SENSING



Codice Code	Tipo Type	cm <sup>3</sup> /giro cm <sup>3</sup> /rev	VMP RF bar	VAS SV bar	P MAX bar	P BSP	V (x 2)	C (x 4)	H	kg
DHKUS50401	HKUS 40/5/100	39.6			125				130.8	5.30
DHKUS50501	HKUS 50/5/100	49.5			150				132.2	5.40
DHKUS50601	HKUS 63/5/100	65.6			175				133.9	5.50
DHKUS50801	HKUS 80/5/100	79.2			175				136.2	5.60
DHKUS51001	HKUS 100/5/100	99.0			175				138.8	5.70
DHKUS51201	HKUS 125/5/100	123.8	100	160	175	1/2"	M10x1	M10	142.2	5.80
DHKUS51601	HKUS 160/5/100	158.4			175				146.8	6.00
DHKUS52001	HKUS 200/5/100	198.0			175				152.2	6.30
DHKUS52501	HKUS 250/5/100	247.5			175				158.8	6.50
DHKUS53201	HKUS 320/5/100	316.8			175				168.2	7.00
DHKUS54001	HKUS 400/5/100	396.0			175				178.8	7.40

VALVOLE INCORPORATE : VALVOLA NON RITORNO + VALVOLA LIMITATRICE DI PRESSIONE (VMP) + VALVOLA ANTICAVITAZIONE + VALVOLA ANTI-SHOCK (VAS)  
 BUILT-IN VALVES : CHECK VALVE + RELIEF VALVE (RF) + ANTICAVITATION VALVES + SHOCK VALVES (SV)

HKUS.../5 = PER VALVOLA PRIORITARIA FLANGIABILE - FOR FACE MOUNTING PRIORITY VALVE

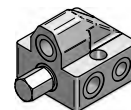
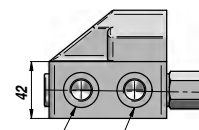
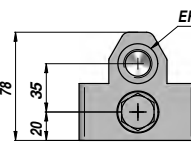
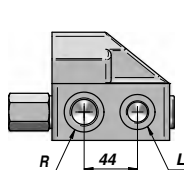
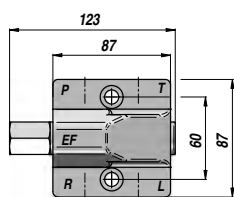
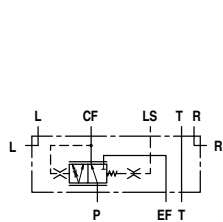
A RICHIESTA - ON REQUEST :

HKUS.../5T = PER VALVOLA PRIORITARIA IN LINEA - FOR PIPE MOUNTING PRIORITY VALVE HKUS.../5D - HKUS.../5DT = CON SEGNALE DINAMICO - WITH DYNAMIC SIGNAL

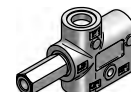
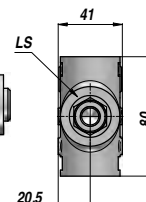
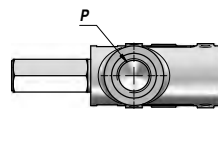
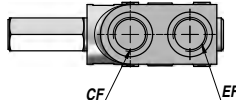
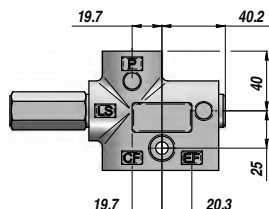
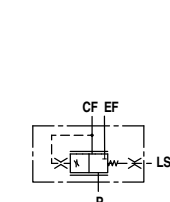
VALVOLA PRIORITARIA PER IDROGUIDA LOAD-SENSING  
PRIORITY VALVE FOR LOAD-SENSING STEERING UNIT

VPRD

VPRTA



PRD - STATIC SIGNAL



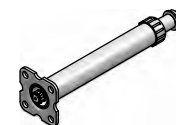
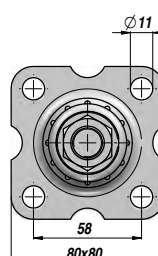
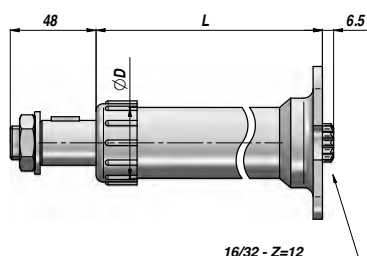
PRTA - STATIC SIGNAL

Codice Code	Tipo Type	Segnale Signal	Q MAX l/min	Molla Spring	P - EF BSP	T - R - L BSP	CF BSP	LS BSP	kg
VPRD0800 **	PRD 80/** (x HKUS.../5)	Static	80	4-7-10 bar	1/2"	3/8"			2,25
VPRDD080 **	PRD-D 80/** (x HKUS.../5)	Dynamic	80	4-7-10 bar	1/2"	3/8"			2,25
VPRTA080 **	PRTA 80/** (x HKUS.../5T)	Static	80	4-7-10 bar	1/2"		1/2"	1/4"	1,30
VPRTAD08 **	PRTA-D 80/** (x HKUS.../5T)	Dynamic	80	4-7-10 bar	1/2"		1/2"	1/4"	1,30

\*\* = 04 - 07 - 10 bar

COLONNETTA PER IDROGUIDA  
STEERING COLUMN

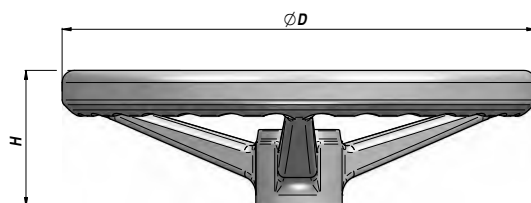
ACI



Codice Code	L	ØD	Cono Taper	kg
ACI0075000	75	38	Type 1 1:20 Ø23.2 M18x1.5	0,70
ACI0150000	165			0,97
ACI0200000	200			1,05
ACI0270000	270			1,25
ACI0350000	350			1,45
ACI0400000	400			1,55
ACI0450000	450			1,65
ACI0520000	520			1,92
ACI0600000	600			2,05
ACI0750000	775			2,45

AV

VOLANTE  
STEERING-WHEEL



Codice Code	Tipo Type	ØD	H	Cono Taper	kg
AV00320001	360	352	105	1.20 (Type 1)	1,80
AV00320105	390	387	140	1.20 (Type 1)	2,00

ALTRE MISURE A RICHIESTA - OTHER DIMENSIONS ON REQUEST

AT

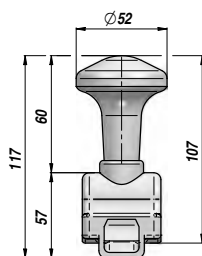
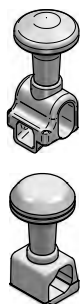
TAPPO PER VOLANTE  
CAP FOR STEERING-WHEEL



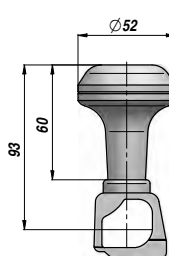
Codice Code	Per volante For steering-wheel	ØD	H	kg x 100
AT00470064	360/390	62	20	1,30

AP

POMELLO RIGIDO PER VOLANTE  
HARD KNOB FOR STEERING-WHEEL



Type 360



Type 390

Codice Code	Per volante For steering-wheel	kg x 100
AP00340212	Type 360	8,50
AP00340263	Type 390	7,60